

## 270 Hillier Road, HOWARD SPRINGS, NT 0835

### FIVE ACRES OF PURE LIFESTYLE

Tired of cramped suburbs and noisy neighbours? Craving space, style and a home that actually delivers the wow factor? Say hello to your dream rural retreat five lush, manicured acres just 2km from the heart of Howard Springs.

This isn't just a house. It's a vibe.

What's on offer? Oh, just this:

- A peaceful, private 5-acre paradise with tropical gardens
- Sleek, stylish semi elevated home move-in ready and low maintenance
- Designer kitchen with stone benchtops, gas cooktop & breakfast island
- Light-filled open plan living flowing out to a massive entertainer's deck
- Two spacious bedrooms & chic bathroom in the main home
- Breezy decked walkway to your private master suite (yes, it's dreamy)

**TYPE:** Under Contract

**INTERNET ID:** 300P186249

**SALE DETAILS**

**UNDER CONTRACT**

**CONTACT DETAILS**

**Darwin**

70 Smith Street  
DARWIN, NT  
08 8946 0500

**Judy Blore**

0408 898 551

- Sparkling inground spa surrounded by lush greenery, spa party, anyone?
- Heaps of undercover parking + epic 5-bay shed for all your toys and tools

The layout is smart and super liveable high ceilings, louvre windows, cool neutral tiles. The kitchen's a showstopper. The deck is next-level. The master suite is its own little sanctuary, perfect for lazy Sundays or sneaky spa sessions under the stars.

Outside, the good times keep rolling. Whether it's BBQs with mates, chill afternoons in the spa, or just soaking up the serenity this property was built for lifestyle.

And the best part? You've got space, peace and privacy, without sacrificing convenience. It's just minutes to shops, school, tavern, Coolalinga (5km) and Palmerston (11km).

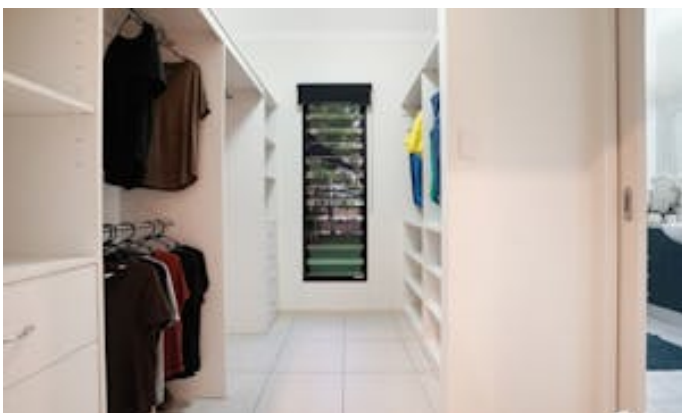
Rural living never looked so good.

Homes like this don't come up often and when they do, they don't last. If you're ready to escape the ordinary, book your inspection now and come see what all the fuss is about.

Other features: Bush Retreat, Close to Schools, Close to Shops, Close to Transport, Prestige Homes

- Land Area 2.2 hectares
- Building Area: 300.00 square metres
- Bedrooms: 3
- Bathrooms: 2
- Car Parks: 5
- Ensuite











## 270 HILLIER ROAD, HOWARD SPRINGS

### DISCLAIMER

PLANS SHOWN ARE FOR MARKETING PURPOSES ONLY, ALL DIMENSIONS ARE APPROXIMATE AND NOT TO SCALE. THEY ARE SUBJECT TO ERRORS AND INACCURACIES AND NO LIABILITY WILL BE ACCEPTED. INTERESTED PARTIES SHOULD MAKE THEIR OWN INQUIRIES.