



## 3 Bismarkia Court, DURACK, NT 0830

### EVERYDAY CHARM WITH CHARISMA

Freshly painted inside and out, this lovely three-bedroom home feels bright and effortless within a spacious, family-friendly layout, complemented by relaxed alfresco entertaining and a grassy yard that kids and pets will love to play on.

- ï#- Neatly landscaped block on quiet tree-lined street
- ï#- Modern, low maintenance living ideal for families
- ï#- Generous open-plan living split into distinct zones
- ï#- Attractive kitchen acts as perfect hub of the home
- ï#- Covered verandah flows seamlessly from open-plan
- ï#- Grassy yard and alfresco create relaxed, easy escape
- ï#- Large master features walk-in robe and ensuite
- ï#- Two bedrooms at rear feature built-in robes
- ï#- Main bathroom with bath, shower and separate WC

The particulars contained herein are supplied for information only and shall not be taken as a representation in any respect on the part of the vendor or its agent. Interested parties should contact the nominated person or office for full and current details.

**TYPE:** For Sale

**INTERNET ID:** 300P186315

#### SALE DETAILS

**PRICE GUIDE**  
**\$675,000**

#### CONTACT DETAILS

**Darwin**  
70 Smith Street  
DARWIN, NT  
08 8946 0500

**Judy Blore**  
0408 898 551

ï#- Double carport, garden shed, split-system AC, laundry

First home buyers, young families, downsizersâ#¡ This one is for you! Looking for an investment to add to your portfolio? Again, this property is simply perfect!

Neat, tidy and well-appointed throughout, it has everything you need in a home, ideally positioned on Durack's fringes, moments from schools, shops and leafy lakeside parkland.

So, what else do you need to know?

With its fresh coat of paint, the entire home feels airy and inviting â## a sense that is accentuated even more by its high ceilings and plentiful natural light. It's also impressively spacious, through both the open-plan and bedrooms.

Wonderfully practical, the layout centres on a tastefully appointed kitchen, where modern stainless-steel appliances, stone benches and heaps of storage give keen at-home chefs everything they need to cook and create.

Another great feature here is the way the open-plan is split into zones, working well for families looking for space to retreat as well as connect. And for the entertainer, the natural flow outdoors is sure to be appreciated, as the space connects to a comfortable covered verandah.

Offering the perfect spot for catching up with friends, having family over, or simply kicking back at the end of a long week, this alfresco space is oh-so easy to spend time in. Meanwhile, the kids have loads of running-around space in the fully fenced yard.

Alongside three generously proportioned bedrooms, the interior is completed by an ensuite and full family bathroom, plus an internal laundry with yard access. There's also a sizeable garden shed, split-system AC and a double carport adding further functional appeal.

As for location, there are lakeside pathways and parks to explore nearby, as well as Palmerston Golf Course. Meanwhile, Palmerston City is moments away, while Darwin CBD can be reached in less than 20 minutes.

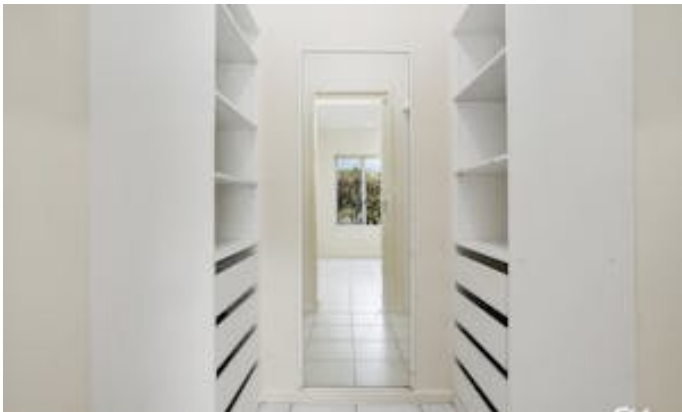
Come and see it for yourself! Call today to arrange your inspection.

Other features: Close to Schools, Close to Shops, Close to Transport, Golf Course Estate

- Land Area 416.00 square metres
- Building Area: 183.00 square metres
- Bedrooms: 3
- Bathrooms: 2
- Car Parks: 2
- Ensuite













### 3 BISMARKIA CRT, DURACK

#### DISCLAIMER

PLANS SHOWN ARE FOR MARKETING PURPOSES ONLY. ALL DIMENSIONS ARE APPROXIMATE AND NOT TO SCALE. THEY ARE SUBJECT TO ERRORS AND INACCURACIES AND NO LIABILITY WILL BE ACCEPTED. INTERESTED PARTIES SHOULD MAKE THEIR OWN INQUIRES.