



CARAPOOEE WEST VIC 3477

Rural Retreat situated on 48 acres.

19.42 hectares, 48.00 acres

A rare opportunity to secure 48 acres across three titles, offering unmatched serenity and a true off-grid lifestyle. Perfectly positioned alongside the Kara Kara National Park, this property boasts frontage to the head of middle creek, diverse native flora and fauna, and the peace and quiet only nature can provide.

The standout feature is a purpose-built mud brick home, designed for low-energy living and comfort. Powered by a modular lithium solar system with 5kW inverter, the home offers sustainable independence while maintaining modern convenience. An extensive water supply is assured with tank storage of 90,000 litres along with a large catchment dam.

Additional improvements include a 30' x 20' steel-framed shed with concrete floor, providing ample storage or workshop space.

Whether you're seeking a country escape, a private residence, or exploring the potential for short-term stays, this unique holding delivers on lifestyle and opportunity.

The particulars contained herein are supplied for information only and shall not be taken as a representation in any respect on the part of the vendor or its agent. Interested parties should contact the nominated person or office for full and current details.

TYPE: For Sale

INTERNET ID: 300P186407

SALE DETAILS

\$425,000

CONTACT DETAILS

Horsham

87 Stawell Road
Horsham, VIC
03 5382 8800

Scott Cameron
0418991776

- Land Area 19.424911 hectares
- Bedrooms: 4
- Bathrooms: 3



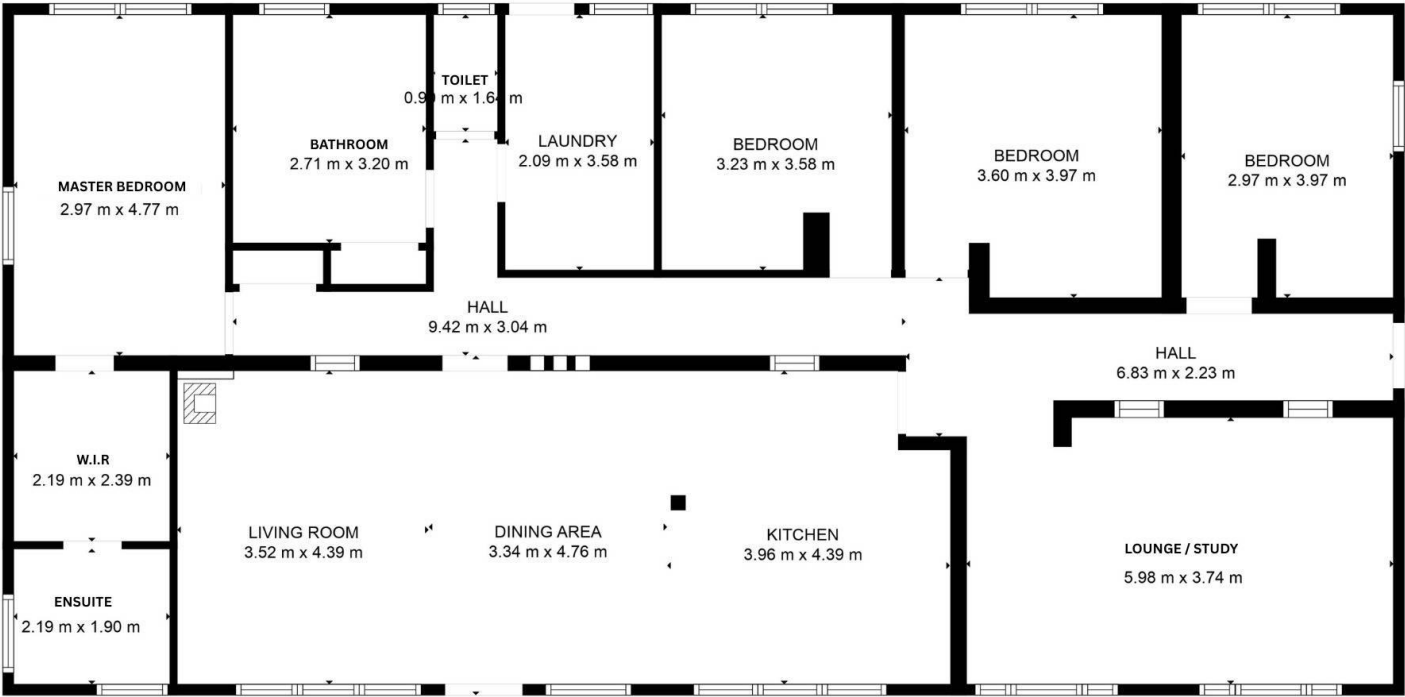
HOMESTEAD

Bedrooms	4
Bathrooms	3









TOTAL: 181 m2
FLOOR 1: 181 m2
EXCLUDED AREAS: WALLS: 9 m2

FLOOR PLAN CREATED BY CUBICASA APP. MEASUREMENTS DEEMED HIGHLY RELIABLE BUT NOT GUARANTEED.