



605 Natone Road, NATONE, TAS 7321

Escape the hustle and discover the serenity of country living

Nestled in the peaceful countryside of Natone, 605 Natone Road presents an outstanding opportunity to embrace a relaxed rural lifestyle on approximately 2.5 hectares of gently undulating land. This solid, well-maintained home offers space, comfort, and versatility, making it ideal for families, hobby farmers, or anyone looking to enjoy the tranquillity of country living.

The upper level of the home features a generous floor plan of approximately 139 square metres, with three spacious bedrooms, a central bathroom, and a separate toilet. The light-filled lounge room, complete with a fireplace, creates a warm and inviting space to unwind, while the adjacent dining area flows easily into a practical kitchen with plenty of storage. A separate laundry and an additional multi-use space near the kitchen add further convenience and flexibility to the home's layout.

Downstairs, the lower level provides approximately 78 square metres of additional space, featuring a large double garage and workshop, perfect for tradies or those needing extra storage. A separate rumpus or hobby room offers the ideal spot for a games room, teenage retreat, or home office, and there's an undercover entry area to keep you dry during Tassie's wetter days.

TYPE: For Sale

INTERNET ID: 300P186532

SALE DETAILS

Offers Over \$599,000

CONTACT DETAILS

Elders Real Estate Burnie

72-74 Wilson Street

Burnie, TAS

03 6432 2311

Bruce Jubb

0417987828

Outdoors, the property continues to impress. A small stream runs through the land, enhancing the natural beauty of the setting, while a dam provides additional water options for gardens or animals. The expansive block offers ample space for veggie gardens, pets, or even a few head of livestock, and there's plenty of potential to develop further or simply enjoy as-is.

Located within easy driving distance to Burnie and nearby townships, this is your chance to secure an affordable lifestyle property with room to breathe, grow, and enjoy the best of Tasmania's countryside. Whether you're looking for a family home, a rural retreat, or a base for a small hobby farm, 605 Natone Road is ready to welcome you.

DISCLAIMER: While Elders Real Estate Burnie has taken every care to verify the accuracy of the details in this advertisement, we cannot guarantee its correctness. Prospective buyers or tenants need to take such action as is necessary, to satisfy themselves of any pertinent matters

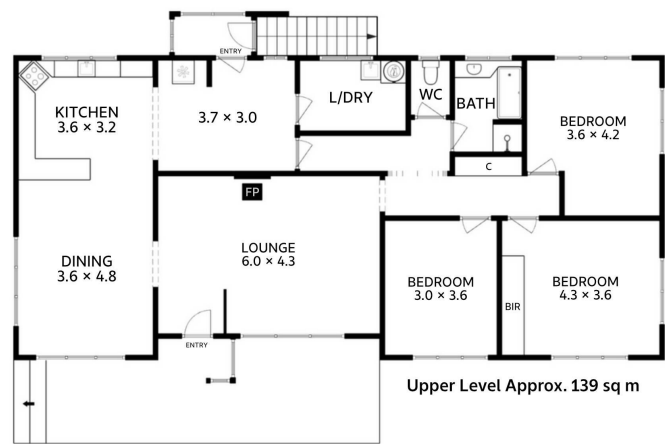
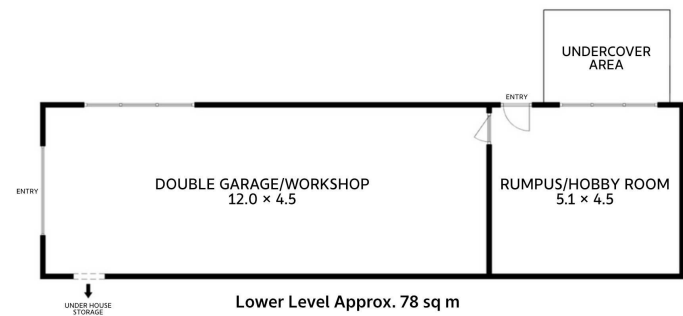
- Land Area 2.52 hectares
- Building Area: 217.00 square metres
- Bedrooms: 3
- Bathrooms: 1
- Double garage







605 Natone Road
Natone



Approx. Total Floor Area 217 sq m
(excluding undercover area)

All measurements are internal and approximate.
This plan is a sketch for illustration, not valuation.

