



## 1/26 Lind Road, JOHNSTON, NT 0832

### Low Maintenance 2 Bedroom Townhouse in Quiet Johnston Complex

Modern and low maintenance, this 2 bedroom, 2 bathroom townhouse in a quiet complex of five offers a spacious open-plan layout, private yard, and covered outdoor entertaining area. Ideal for couples or small families.

- 2 spacious bedrooms, both with built-in robes
- 2 bathrooms, including ensuite to master
- Double carport with secure access
- Air conditioned and tiled throughout
- Modern electric kitchen with ample storage
- Covered patio and small secure yard
- Internal laundry
- Unfurnished
- Quiet complex of only 5 townhouses

**TYPE:** For Rent

**INTERNET ID:** 300P186623

#### RENTAL DETAILS

**Rent / Lease:**

**\$600 per week**

#### CONTACT DETAILS

**Darwin**

70 Smith Street

DARWIN, NT

08 8946 0500

**Cathrine Nielsen**

0418 872 255

The particulars contained herein are supplied for information only and shall not be taken as a representation in any respect on the part of the vendor or its agent. Interested parties should contact the nominated person or office for full and current details.

- Built in 2015

Located in Johnston, this home is within minutes of local schools, shops, parks and public transport, and just a short drive to Palmerston CBD and Gateway Shopping Centre.

Other features: Close to Schools, Close to Shops, Close to Transport

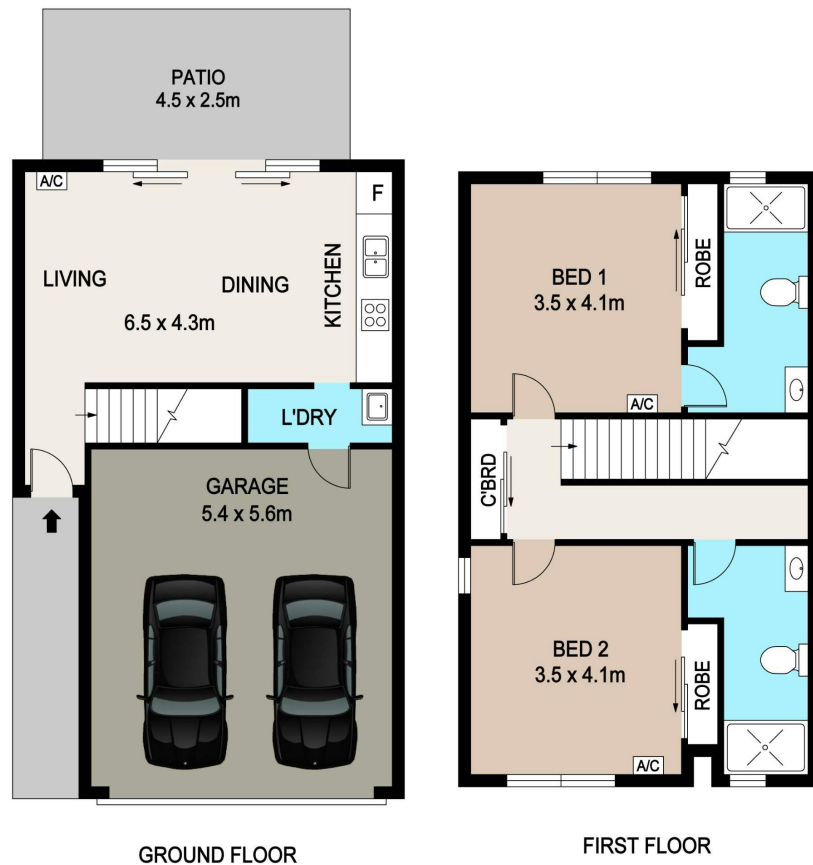
- This property is: Unfurnished
- Pets: No
- Available on: 15/10/25
- Bedrooms: 2
- Bathrooms: 2
- 3 car carport
- Ensuite











## 1/26 LIND ROAD, JOHNSTON

### DISCLAIMER

PLANS SHOWN ARE FOR MARKETING PURPOSES ONLY. ALL DIMENSIONS ARE APPROXIMATE AND NOT TO SCALE. THEY ARE SUBJECT TO ERRORS AND INACCURACIES AND NO LIABILITY WILL BE ACCEPTED. INTERESTED PARTIES SHOULD MAKE THEIR OWN INQUIRES.