



60 Pogue Road, TOOLAMBA, VIC 3614

A Unique Mixed Farming/Lifestyle Opportunity Located on the Goulburn River

89.00 hectares, 219.92 acres

Elders Rural Services Australia Limited is pleased to present for sale 60 Pogue Road, Toolamba a highly versatile mixed farming and lifestyle opportunity with direct frontage to the magnificent Goulburn River.

Comprising 89 hectares (219 acres)* of productive and versatile land, the property offers a combination of scale, an optimal natural resource base and idyllic lifestyle opportunities. With fertile soils, level topography and established infrastructure, 60 Pogue Road is ideally suited to livestock, cropping, viticulture and/or horticultural pursuits.

Situated within the sought-after Toolamba region, the property is positioned in close proximity to Shepparton and the tourism-rich Nagambie district, offering award-winning wineries, water sports on Lake Nagambie, and expansive Goulburn River landscapes.

Key features:

TYPE: For Sale

INTERNET ID: 300P186654

SALE DETAILS

by Expression of Interest

CONTACT DETAILS

Elders Real Estate Victoria
Level 36, 55 Collins Street
Melbourne, VIC
03 9609 6222

Henry Mackinnon
0408 408 299

- Total land area: 89 hectares (219 acres)* with Goulburn River frontage
- Comfortable four-bedroom, two-bathroom residence positioned on an elevated aspect
- Excellent working improvements including multiple machinery and hay sheds, workshop, enclosed chemical shed, and sundry shedding
- Secure water supply via the Goulburn River plus 37,500L* rainwater storage
- Irrigation infrastructure including submersible pumps, pump controls and filtration systems
- Highly versatile land suited to a range of enterprises including livestock, cropping, viticulture and horticulture
- Ideally located 4km* north of Toolamba, 18km* south-west of Shepparton, 47km* north-east of Nagambie, and 185km* north-east of Melbourne CBD

60 Pogue Road is being offered for sale via Expression of Interest closing Thursday 6th November 2025 at 4pm (AEDT).

Henry Mackinnon 0409 409 299

Brendan Allen 0499 229 007

Nick Myer 0427 610 278

* denotes approximately

- Land Area 89 hectares
- Bedrooms: 4
- Bathrooms: 2



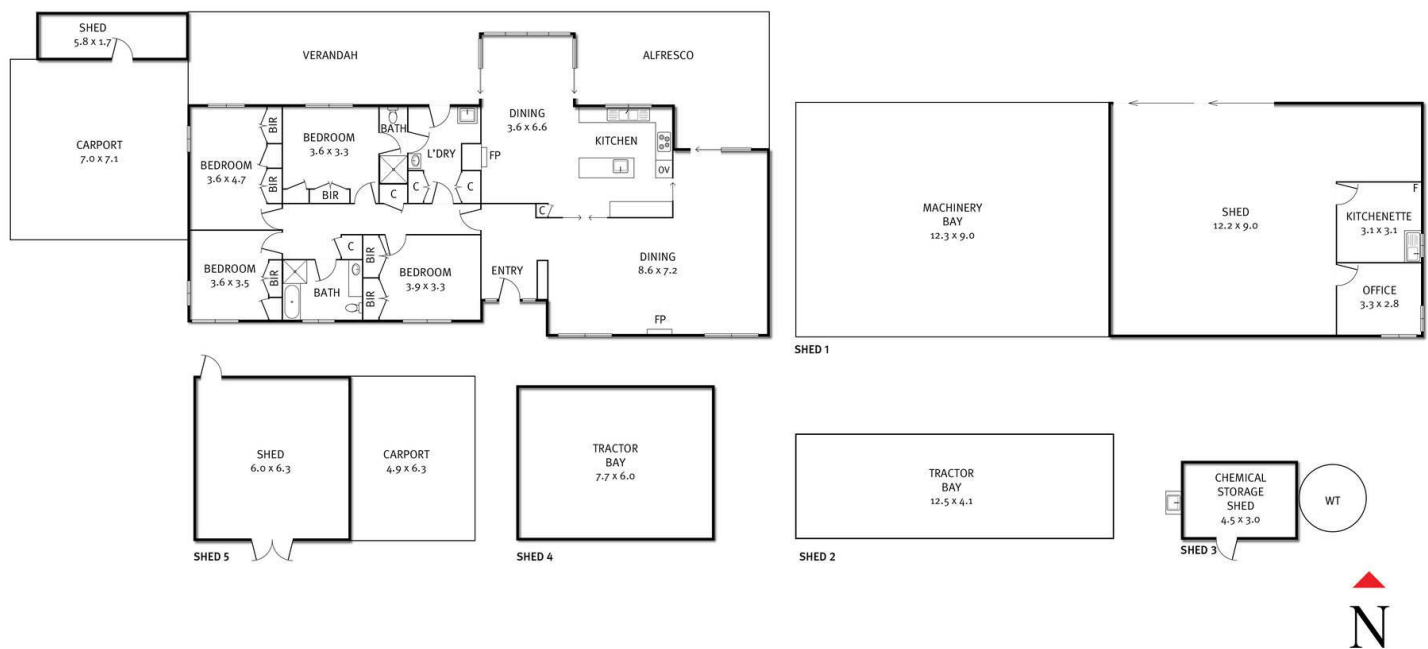
HOMESTEAD

Bedrooms	4
Bathrooms	2





60 Pogue Road, Toolamba

THE ABOVE PLAN IS AN ARTIST'S IMPRESSION ONLY, IT INCLUDES ELEMENTS THAT ARE FOR DISPLAY PURPOSES ONLY AND MAY NOT BE TO SCALE. LANDSCAPING SHOWN IS INDICATIVE ONLY. DIMENSIONS ARE APPROXIMATE.

60 Pogue Road, Toolamba



THE ABOVE PLAN IS AN ARTIST'S IMPRESSION ONLY, IT INCLUDES ELEMENTS THAT ARE FOR DISPLAY PURPOSES ONLY AND MAY NOT BE TO SCALE.
LANDSCAPING SHOWN IS INDICATIVE ONLY. DIMENSIONS ARE APPROXIMATE.