



3/5 Scotland Street, BALAKLAVA, SA 5461

Perfect Investment or downsize

Tucked away in a quiet group of units, Unit 3/5 Scotland Street, Balaklava offers low-maintenance living just a short stroll from the main street. Built 2007, this well-presented 2-bedroom, 1-bathroom unit is ideal for downsizers, first-home buyers, or investors.

The open-plan living, dining, and kitchen area is equipped with a split system air conditioner for year-round comfort. Both bedrooms include built-in robes, while the bathroom is complemented by a separate toilet for added convenience. The semi-enclosed single carport features an electric roller door, providing secure off-street parking. A rear veranda offers a private outdoor space, perfect for relaxing or entertaining.

Set within a Community Plan group, this property combines convenience with easy-care living. Whether you're looking to move in or invest, this well-located unit is a fantastic opportunity in the heart of Balaklava. Don't miss your chance to secure this neat and tidy home in a prime location.

Contact Lisa Curnow on 0421 278 185 or lisa.curnow@elders.com.au

TYPE: For Sale

INTERNET ID: 300P186767

SALE DETAILS

\$350,000

CONTACT DETAILS

Elders Real Estate Clare Valley / Burra

230 Main North Road

Clare, SA

08 8842 9300

Lisa Curnow

0421278185

RLA 62833

Wakefield Regional Council

Zone: Neighbourhood

Year Built: 2007

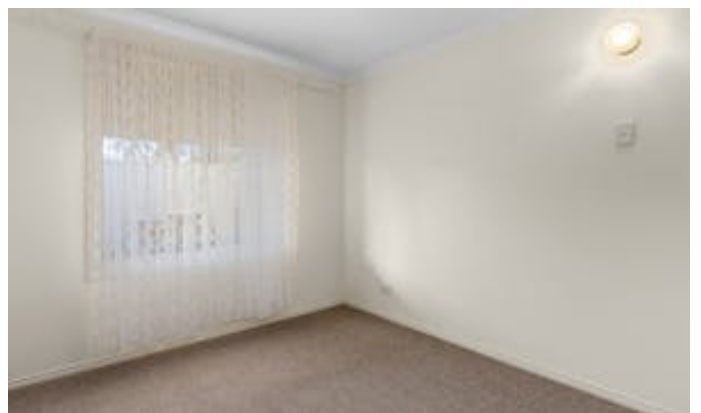
Council Rates: \$2,072.10 2025/26

Land Size: 246m2 (approx.)

Living size: 75m2 (approx.)

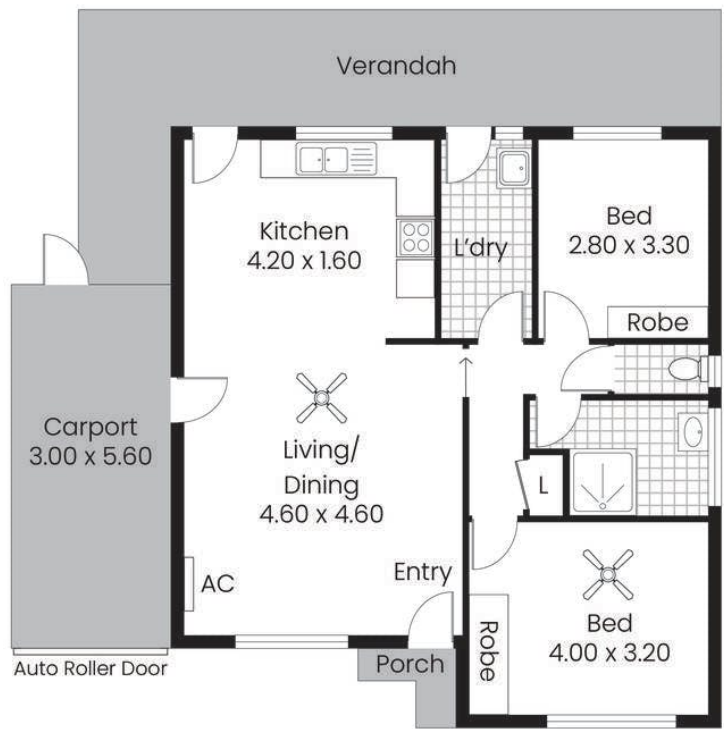
Disclaimer: Care is taken to verify the correctness of all details used in this advertisement. No warranty is given as to the correctness of information supplied and neither the owners nor their agent can accept responsibility for error.

- Land Area 246.00 square metres
- Building Area: 75.00 square metres
- Bedrooms: 2
- Bathrooms: 1
- Car Parks: 1
- Single carport





RWT



Living:	73.55sqm
Verandah:	29.48sqm
Carport:	16.80sqm
Porch:	1.95sqm
Total:	121.78sqm

This drawing is for illustration purposes only.
All measurements are internal and approximate.
Details intended to be relied upon should be
independently verified.
Produced by Open2view.com

