



2 Kahana Avenue, BURDELL, QLD 4818

Executive Family Residence with Self-Contained Flexibility

Welcome to a masterfully designed executive residence that sets a new benchmark for family living in one of Burdell's most desirable and tightly held locations. Built in 2019 by award-winning Cougar Homes, this high-end home delivers a perfect synergy of luxury, functionality, and innovation-designed for modern families who refuse to compromise.

This meticulously appointed 4-bedroom, 3-bathroom home features a highly versatile layout with premium inclusions throughout.

The standout feature is a fully self-contained wing, ideal for multigenerational living, teenage independence, guests, or a professional home business setup.

Executive Highlights:

- Self-contained guest/in-law wing with internal entry: Includes 4th bedroom, 3rd bathroom, and second living area-fully integrated yet separate
- Modern chef's kitchen with expansive bench space, large induction cooktop, new pyrolytic oven, and a generous butler's pantry
- Open-plan main living and dining zone with cathedral ceilings and seamless

The particulars contained herein are supplied for information only and shall not be taken as a representation in any respect on the part of the vendor or its agent. Interested parties should contact the nominated person or office for full and current details.

TYPE: For Sale

INTERNET ID: 300P186799

SALE DETAILS

Offers over \$949,000

CONTACT DETAILS

Brenda Thompson
0447 072 899

indoor-outdoor flow to the alfresco entertaining area

- 3 luxurious bathrooms tiled floor-to-ceiling, with dual ensuite showers delivering unmatched comfort and style
- Children's wing with two bedrooms, a central play zone, and stylish barn door for privacy
- Dedicated office nook-perfect for remote work or study
- High 2.7m ceilings throughout, plus a grand 3m-High entrance with oversized 1.2m x 2.4m front door for a striking first impression
- Heated 2.9m x 4.4m magnesium pool with adjoining deck-finished in Pebble Crete and shaded by a Mimosa 3x4m Lava Portsea Louvre gazebo
- Expansive 3m x 9m side carport with privacy blinds and gated access-ideal for boats, trailers, or extra vehicles
- Advanced 16-channel Swann security system with 10 cameras, doorbell camera & dedicated 32" LG monitor
- Touchpad alarm system with motion sensors
- 13.3kW solar system with dual inverters and a powerful 24kW battery storage for full energy optimization
- 7kW fast electric vehicle charger-future-proof your home with sustainable tech. Security screens to windows. Crim safe screen doors
- Fully automated electric inground sprinkler system for low-maintenance, lush gardens
- Secure 3m x 2.2m garden shed for tools and extra storage

Positioned on a generous corner block opposite a lush park and children's playground, this home is in Burdell-a highly sought-after family suburb. It's in close proximity to quality schools, major shopping center's including Aldi, and offers easy access to public transport and main roads, combining convenience with community living.

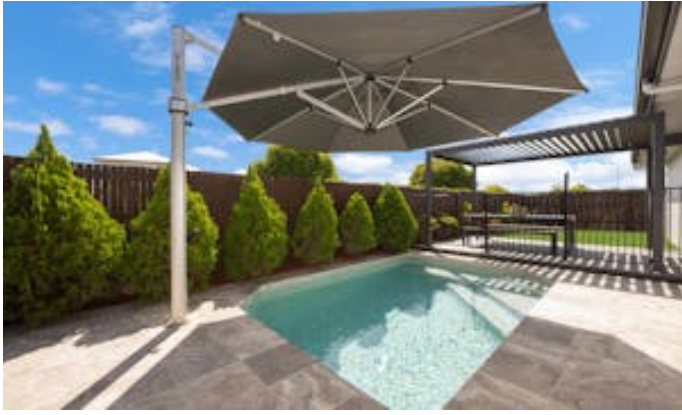
Contact Brenda Thompson Ph:0447072899 to arrange your private inspection. This premier residence won't last long.

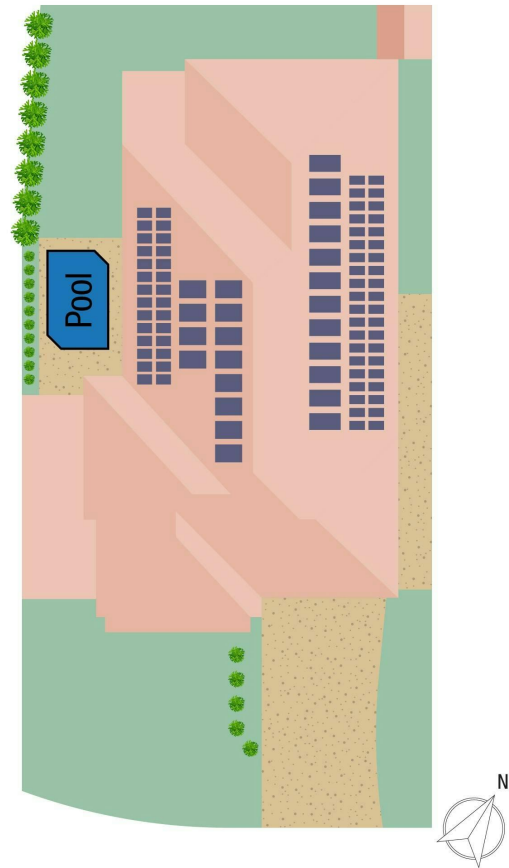
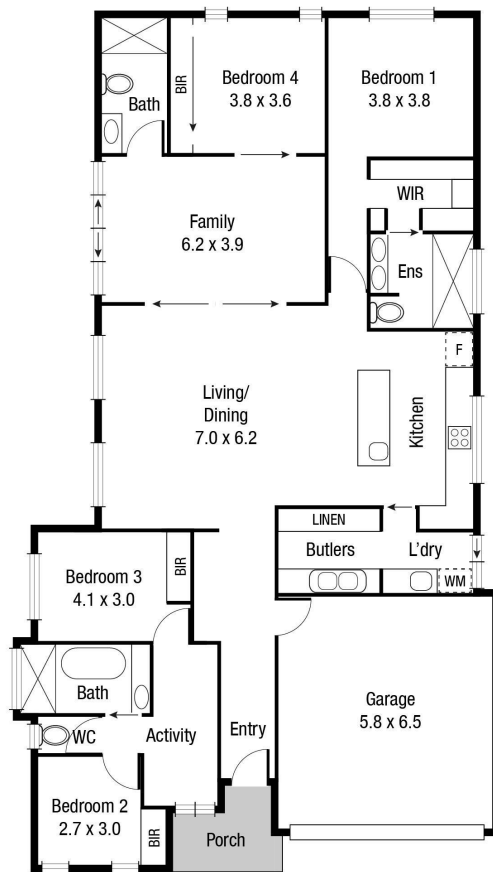
Other features: Carpeted, Close to Schools, Close to Shops, Close to Transport, Openable Windows, Pool

- Land Area 560.00 square metres
- Bedrooms: 4
- Bathrooms: 3
- Double garage
- Single carport
- Ensuite









Scale in metres. Indicative only. Dimensions are approximate. All information contained herein is gathered from sources we believe to be reliable. However we cannot guarantee its accuracy and interested persons should rely on their own enquiries.

TOTAL AREA : 265 sq.m

2 Kahana Avenue, Burdell