



9 Mount Percy Road, COMPTON, SA 5291

The Ultimate Family Package!

- Nestled in a family-friendly location, this property is just a short drive from the vibrant Mount Gambier town centre. Families will appreciate the close proximity to quality education, with Tenison Woods College within walking distance and both Mount Gambier High School and Reidy Park Primary School only a short drive away.

- At the heart of the home is the kitchen featuring an electric oven and cooktop, a dishwasher, a double sink, a moveable island bench, and generous bench and storage space. Wooden flooring flows from the kitchen into the dining and main living area, which are complemented by a reverse cycle air conditioner, along with a woodfire.

- All three bedrooms have been freshly carpeted. Two offer built-in robes and the master with a ceiling fan for added comfort.

- The bathroom offers a separate shower and bath, an updated vanity unit with storage and twin mirrors. A separate toilet sits adjacent for convenience.

- At the rear of the property is a spacious, second living area. It features a built-in bar, a woodfire and heat shifters to the bedrooms, a reverse cycle air conditioner, a ceiling fan

TYPE: For Rent

INTERNET ID: 300P186814

RENTAL DETAILS

Rent / Lease:

\$550 P/W

CONTACT DETAILS

RLA62833

9 Bay Road
MOUNT GAMBIER, SA
08 8726 4400
RLA: 62833

Jo-Ann Campbell

The particulars contained herein are supplied for information only and shall not be taken as a representation in any respect on the part of the vendor or its agent. Interested parties should contact the nominated person or office for full and current details.

and provides access via glass sliding doors onto the outdoor entertaining area.

- Outside, a fully enclosed and low maintenance yard. The undercover, decked pergola is an ideal setting for all year-round entertaining, featuring a potbelly fire. At the rear of the property, an impressive 9m x 6m shed offers high clearance, power, concrete flooring, and even an additional toilet, all easily accessible via double gates. A second 6m x 6m shed is located at the front of the home. Completing the outdoor features is a double carport under the main roof for two cars, a garden / storage shed, a woodshed, a rainwater tank plumbed to the house and a large dog kennel.

Apply via the Apply button. Inspections will be scheduled following application approval. Approved applicants will be contacted to arrange a viewing.

Additional property features:

Available: 01.10.2025

Lease Term: 12-months

Bond Required: \$2,200

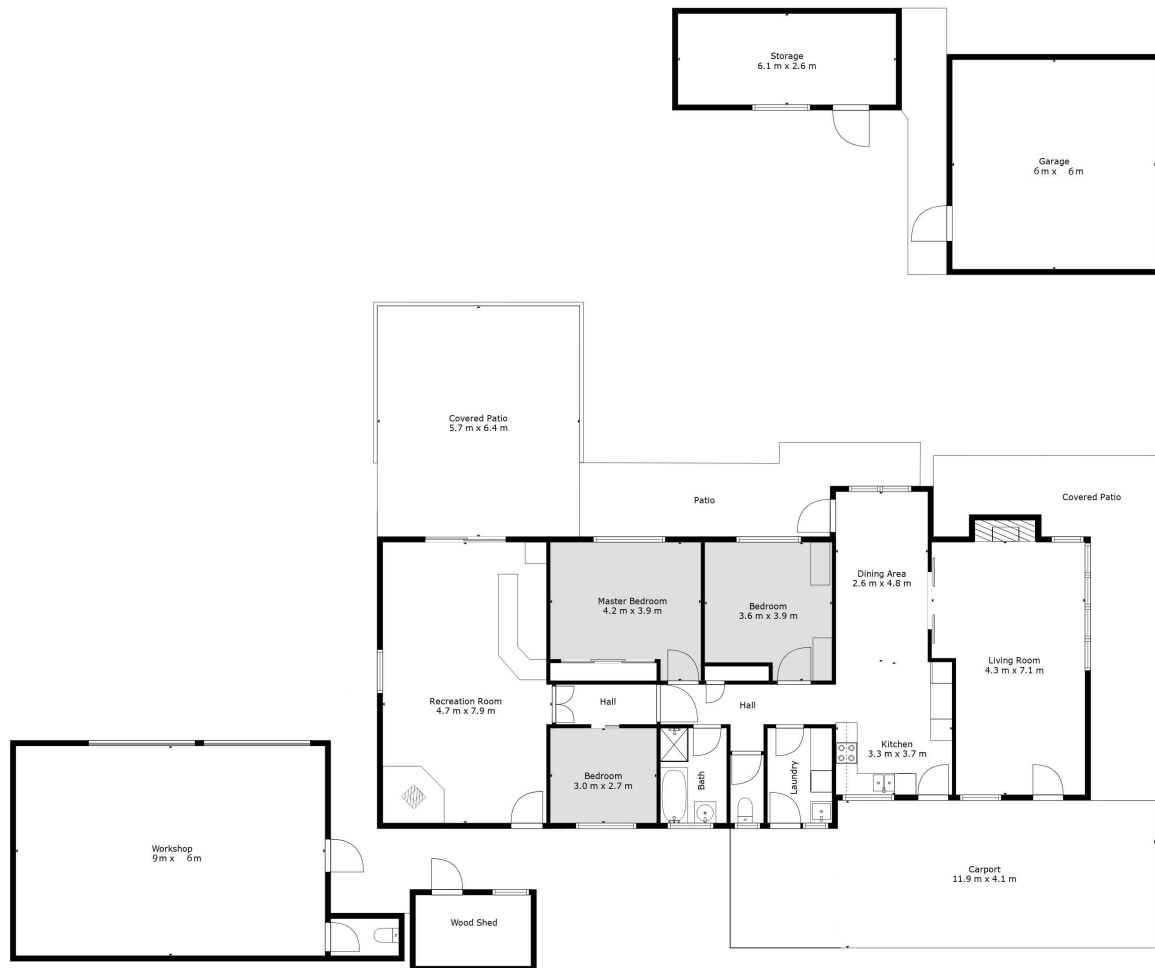
Other features: Close to Schools, High Clearance

- This property is: Unfurnished
- Pets: No
- Available on: 01/10/25
- Land Area 1,062.00 square metre
- Bedrooms: 3
- Bathrooms: 1
- 4 car garage
- Double carport
- Floorboards









TOTAL: 155 m2

FLOOR 1: 155 m2

EXCLUDED AREAS: COVERED PATIO: 63 m2, PATIO: 18 m2, " ": 31 m2,
WOOD SHED: 6 m2, WORKSHOP: 51 m2, GARAGE: 33 m2,
STORAGE: 16 m2, CARPORT: 39 m2, FIREPLACE: 1 m2

Sizes And Dimentions Are Approximate, Actual May Vary



Jake Muller Photography