



105 Stockdales Road, KOONWARRA, VIC 3954

'Kotuku' – A Private Rural Sanctuary on 18 Acres

7.28 hectares, 18.00 acres

Tucked away at the end of a quiet no-through road, 'Kotuku' is a peaceful lifestyle property featuring undulating, productive country, a spacious family home, and excellent infrastructure. Framed by established gardens, a tree-lined driveway, and the tranquil Tarwin West Branch bordering the property, it offers a rare opportunity to enjoy space, privacy, and true country living, while remaining close to nearby towns.

Key property features:

4 / 5 bedroom family home, 2 bathrooms

Blackwood timber kitchen with gas cooktop, electric wall oven & dishwasher

Light-filled open-plan dining area, separate lounge with wood heater

TYPE: For Sale

INTERNET ID: 300P186829

SALE DETAILS

\$1.3 Million

CONTACT DETAILS

Elders
Leongatha/Korumburra
 37 Bair St
 Leongatha, VIC
 03 5662 3523

Katrina Griggs
 0428 571 083

Verandah wrapping around the home, ideal for year-round outdoor living

2-car carport, lock-up shed, storage shed, garden shed & wood shed

Solar panels and inverter to help save you money

Beautifully established gardens and lawn areas, fruit trees & berries

Tank water for the home, large dam plus a second dam with pump supplying garden & stock troughs

4 well-fenced paddocks and timber cattle yards

Ideal for horses, cattle, hobby farming or vegetable growing

Additional land via river lease & road lease

Excellent location just minutes to Koonwarra village, 7 mins to Leongatha, 8 mins to Meenyan, 18 mins to Inverloch, Approx. 1 hour 50 mins to Melbourne CBD

Offering privacy and a peaceful rural lifestyle, 'Kotuku' is perfectly suited to those seeking a quality country holding with a comfortable family home and outstanding location. Whether your dream is running livestock, having horses, growing your own produce or simply enjoying the serenity of the land, this tightly held South Gippsland property delivers it all.

For any further information or to arrange an inspection of this fantastic property please contact Sharon Turton on 0447 604 796 or Katrina Griggs on 0428 571 083.

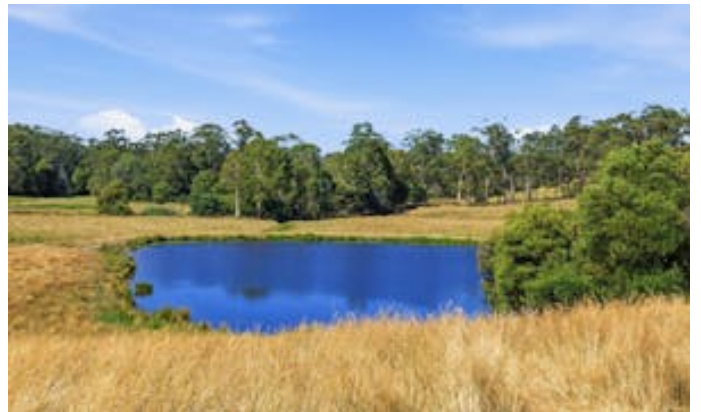
For a Due Diligence Checklist go to: consumer.vic.gov.au/duediligencechecklist

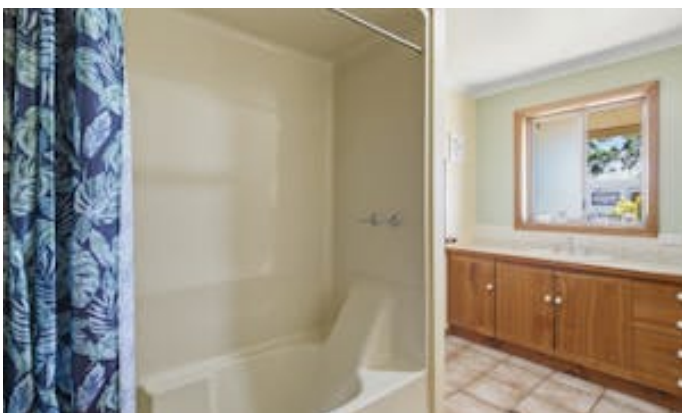
- Land Area 7.284342 hectares
- Bedrooms: 5
- Bathrooms: 2



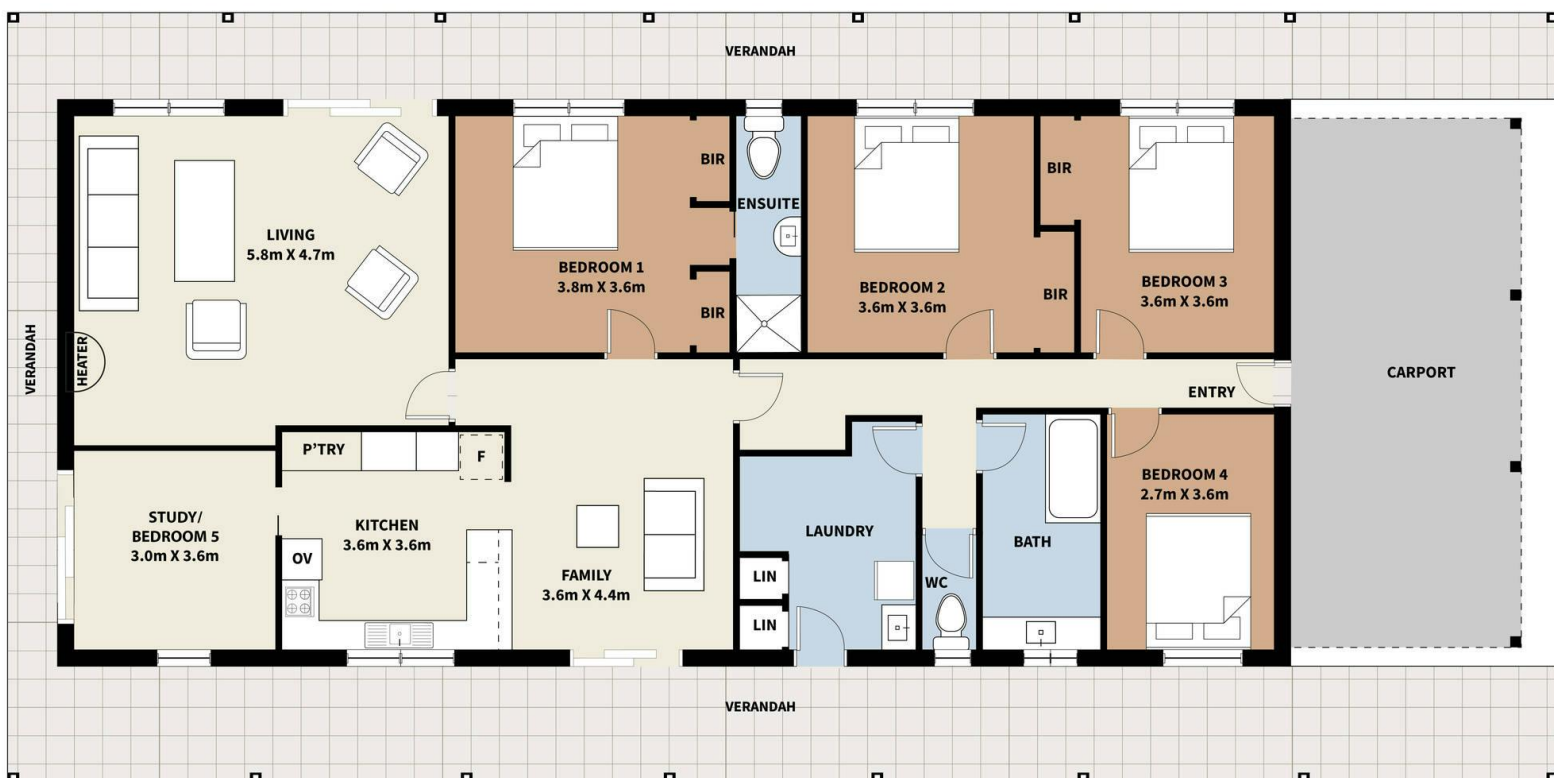
HOMESTEAD

Bedrooms	5
Bathrooms	2

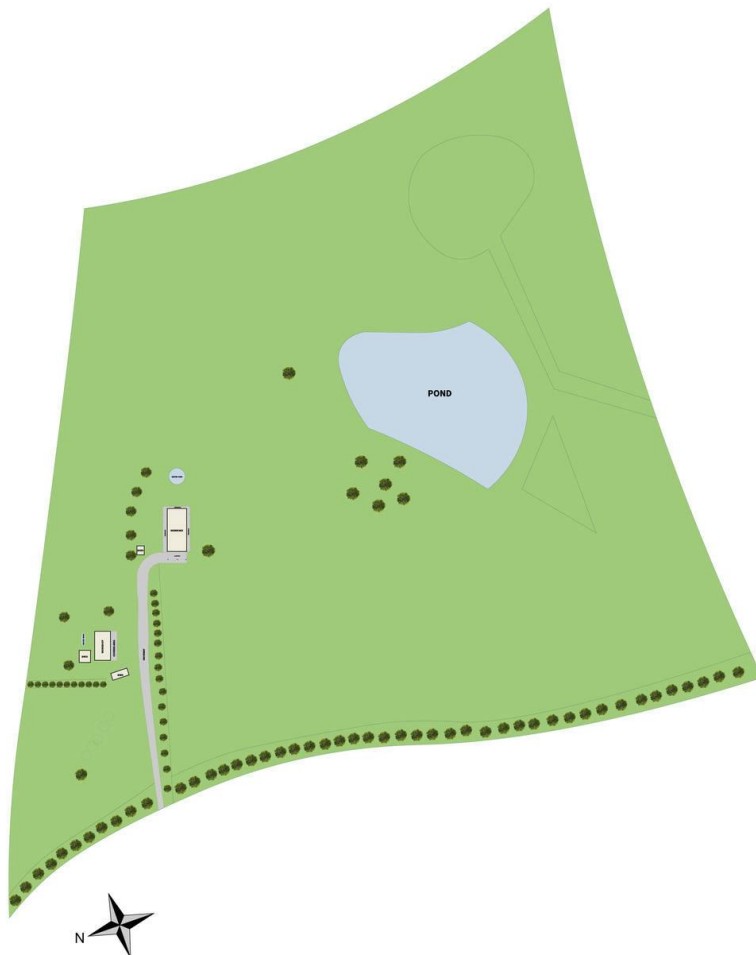
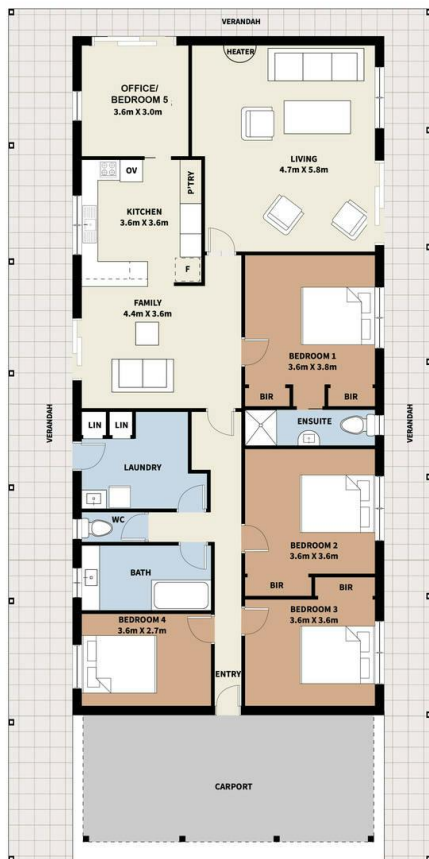








105 STOCKDALES ROAD
KOONWARRA



105 STOCKDALES ROAD
KOONWARRA