



13 Serpentine Crescent, MOUNT MELVILLE, WA 6330

Stunning Home, Panoramic Views, Central Location

Set in the heart of Albany, this stunningly renovated home offers the very best of modern living in a superb central location, and epic panoramic views taking in the Porongurup and Stirling Ranges, and ocean sunrises over King George Sound.

The original home design includes beautiful kitchen and living spaces with vaulted ceilings creating great ambience, with the home oriented to maximise views and to make the most of the sunny side of Mount Melville, offering plenty of natural light and warmth. The current owner has completed a total renovation of the utmost standard, capitalising on the excellent design and presenting a home that is absolutely beautiful, that embraces you with quality and a feeling of contentedness and calm. The quality and atmosphere of the home is something rarely seen in Albany, and will have huge appeal to discerning buyers.

The heart of the home is certainly the kitchen which sits open-plan with dining/living area, while a separate spacious lounge offers a great spot to escape. Both these spaces join a brilliant balcony, which takes in the view and offers a superb spot to enjoy a coffee while you watch the sun rise over the ocean, or to enjoy a drink or BBQ with friends of an evening, watching the twinkling lights of town.

TYPE: For Sale

INTERNET ID: 300P186954

SALE DETAILS

Offers above
\$1,200,000

CONTACT DETAILS

Albany Real Estate
189 Chester Pass Road
ALBANY, WA
08 9842 7900

Blair Scott
0459 024 026

Beyond the home and the views, the final piece of the puzzle is a wonderful central location within very easy reach of bars, cafes, and eateries of town. Make the most of your social life, catch up with friends for a meal or a drink, and perhaps even walk or cycle to work! This wonderful home is simply a stunner, offering an enviable lifestyle to its next lucky owner.

- Stunningly elegant home suits executives, professionals, young families and retirees
- Fully renovated, top quality fittings and workmanship throughout, beautifully finished with amazing calming vibe
- Elevated position high on Mount Melville, north-easterly aspect catches plenty of natural light and warmth
- Stunning panoramic views across Albany to King George Sound, Porongurups, Stirlings and hinterland
- Beautiful kitchen with reconstituted stone benchtops, great feel, quality appliances
- Open-plan living and separate large lounge both with vaulted ceilings creating a sense of space and light
- Brilliant balcony, epic views, ideal for morning coffee or evening drinks/BBQ
- King size master, gorgeous room, walk-in robe and ensuite with bath, shower, and double vanity
- Two queen/double family rooms both with built-in robes
- Superb modern and stylish family bathroom
- Extra large double garage suitable for vehicles and storage
- Extremely easy-care grounds
- Superb central location within easy reach of caf  s and eateries of central Albany

This home will be a joy to visit for the very first time, and every time. Return from a hard days work to style, elegance, and calm - relax, unwind, enjoy. Homes of this calibre in such a great location are hard to find. For your private inspection or more information please contact Blair Scott on 0459 024 026.

Other features: Area Views, City Views, Close to Schools, Close to Shops, Ocean Views, Water Views

- Land Area 429.00 square metres
- Bedrooms: 3
- Bathrooms: 2
- Double garage
- Ensuite



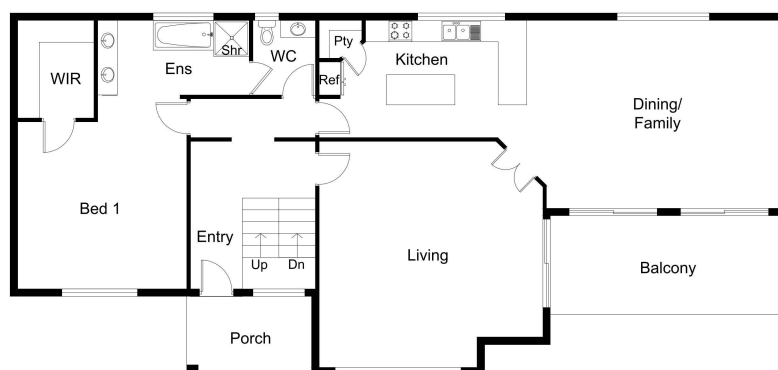








LOWER LEVEL



UPPER LEVEL

This floor plan including furniture, fixture measurements and dimensions are approximate and for illustrative purposes only.
The Agent gives no guarantee, warranty or representation as to the accuracy and layout.
All enquiries must be directed to the agent, vendor or party representing this floor plan.

13 Serpentine Cres, Mount Melville