



## 49 Robinson Way, YARRAWONGA, VIC 3730

Stylish, Ultra Low-Maintenance Four-Bedroom Residence in Prestigious Golfing Estate.

Discover the perfect blend of elegance and ease in this beautifully designed four-bedroom home, ideally situated within the exclusive Silverwood's Golf Estate. Boasting a Master suite complete with ensuite and walk-in robe, this residence offers practical living tailored for comfort and convenience.

Step inside to find an open-plan kitchen, meals, and living area, complemented by a separate lounge room-both featuring stunning high ceilings that enhance the sense of space and light. The modern kitchen is appointed with sleek stone benchtops, perfect for culinary enthusiasts.

Additional highlights include ducted natural gas heating and ducted evaporative cooling, ensuring year-round comfort. Car enthusiasts and golf lovers will appreciate the oversized three-car garage, perfectly suited for vehicle and golf cart storage.

Enjoy outdoor living with a private rear alfresco and a north-facing sitting area, ideal for soaking up winter sunshine. The low-maintenance landscaped gardens provide a tranquil retreat without the hassle.

Situated within the acclaimed Silverwoods Estate, residents benefit from seamless access to Lake Mulwala, the Sebel Resort, and a host of exclusive estate amenities, making this home a rare find for lifestyle and leisure.

**TYPE:** For Sale

**INTERNET ID:** 300P187062

**SALE DETAILS**

**\$659,500**

**CONTACT DETAILS**

**Elders Real Estate  
Yarrawonga**  
48 Belmore Street  
Yarrawonga, VIC  
03 5743 9500

**Xavier Leslie**  
0409 324 037

Experience effortless living in a prestigious community-make this stunning Silverwoods residence yours today.

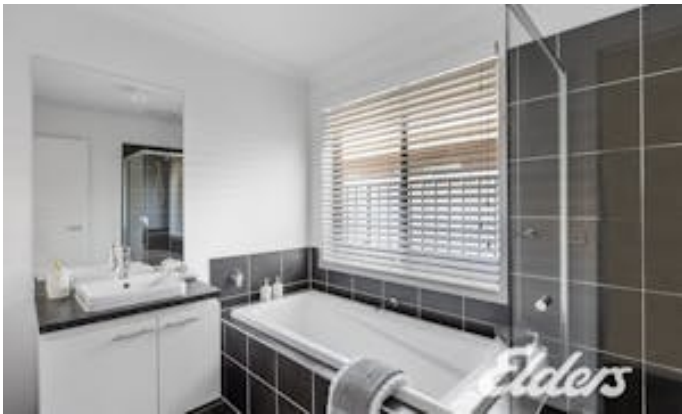
Other features: Carpeted, Exhaust, Golf Course Estate, Heating, Openable Windows

- Land Area 529.00 square metres
- Bedrooms: 4
- Bathrooms: 2
- 3 car garage
- Ensuite

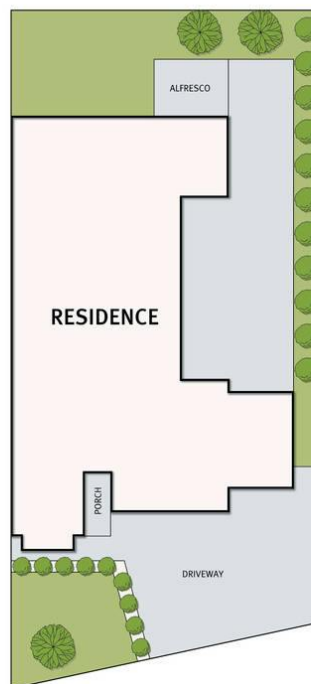
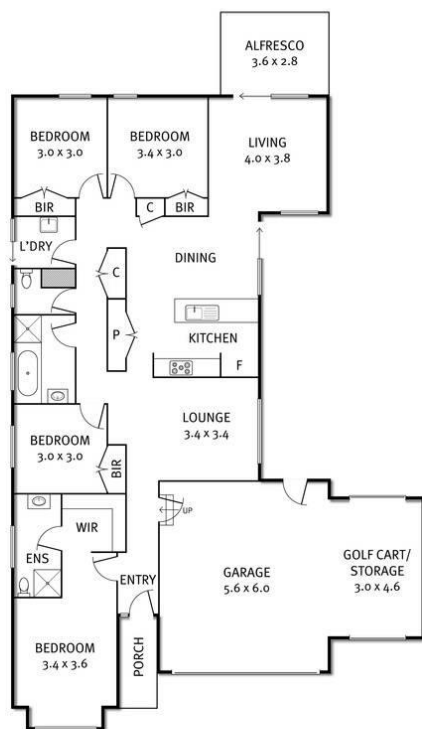








## 49 Robinson Way, Yarrawonga



THE ABOVE PLAN IS AN ARTIST'S IMPRESSION ONLY, IT INCLUDES ELEMENTS THAT ARE FOR DISPLAY PURPOSES ONLY AND MAY NOT BE TO SCALE. LANDSCAPING SHOWN IS INDICATIVE ONLY. DIMENSIONS ARE APPROXIMATE.