



## 2/31 Lorna Lim Terrace, DRIVER, NT 0830

### MODERN 2 BED UNIT CLOSE TO PALMERSTON CBD

Positioned within a secure gated complex of 4 units, this property has a tranquil relaxing feel to it. The unit has been renovated and modernised

Some of the features:

- 2 Good sized bedrooms with carpeting, built-in robes and split air-conditioning
- Modern bathroom with a shower with plenty of storage
- Separate linen closet in the hallway
- Kitchen comes with a breakfast bar and a modern design
- Private courtyard with shade sail overhead
- Decked outdoor entertaining area with handy little garden shed
- Gorgeous fishpond
- Available from 03/10/2025

**TYPE:** For Rent

**INTERNET ID:** 300P187162

#### RENTAL DETAILS

**Rent / Lease:**

**\$500 per week**

#### CONTACT DETAILS

**Darwin**

70 Smith Street

DARWIN, NT

08 8946 0500

**Sharon Clough**

0409 271 969

Located just a short walk to the Palmerston CBD and only minutes to the Palmerston Golf Club and Tavern. Only moments from parklands, local schools, day cares, Marlow Lagoon dog park and BMX along with the Friday night markets and so much more.

How to apply? A link will be sent via 2Apply once the property has been inspected.

Elders does NOT accept 1FORM applications. Please leave your details to register for the next available inspection.

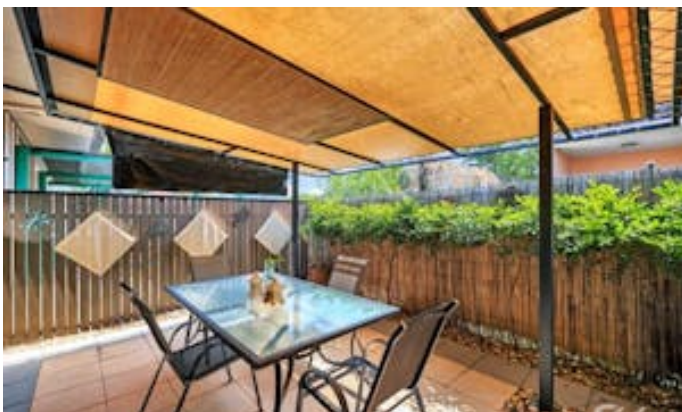
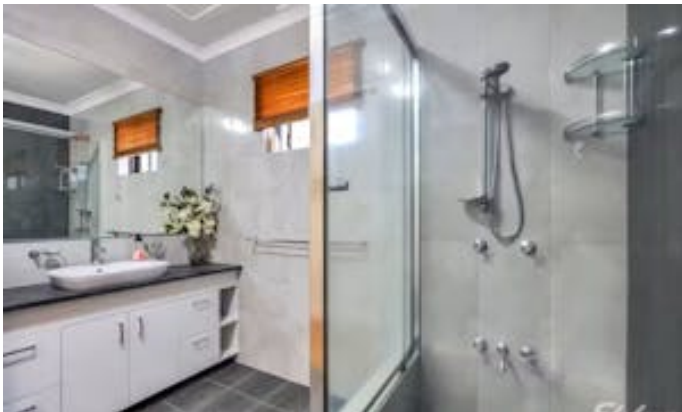
Other features: Close to Schools, Close to Shops, Close to Transport

- This property is: Unfurnished
- Pets: No
- Available on: 03/10/25
- Bedrooms: 2
- Bathrooms: 1
- Car Parks: 2



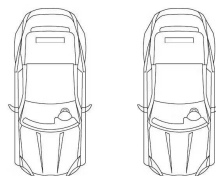












Scale in metres. Indicative only. Dimensions are approximate. All information contained herein is gathered from sources we believe to be reliable. However we cannot guarantee its accuracy and interested persons should rely on their own enquiries.

2/31 Lorna Lim Terrace Driver NT 0830