

36 Cakebread Road, ENCOUNTER BAY, SA 5211

RENOVATE OR DETONATE – PREMIUM LOCATION

Best offers by 2pm 28/10/2025 (Unless Sold Prior)

Price Guide: \$550,000 to \$570,000

Open this Sunday afternoon (19/10/25) call agent for time.

Looking for your next project in a blue-chip coastal position?

Set amongst quality homes and boasting spectacular sea views across to Granite Island, this property offers outstanding potential just a short stroll from the seafront.

The transformation has already begun - with the kitchen and bathroom removed including the bathroom floor, the hard work has just started but not finished. Now it's your chance to take over and create something special - whether you choose to renovate and restore, or start fresh, demolish and build your dream coastal home (Subject to SA Planning consent) to maximize the superb sea views in this awesome spot.

TYPE: For Sale

INTERNET ID: 300P187202

SALE DETAILS

**Best Offers by 28/10/25
2pm (USP)**

CONTACT DETAILS

Elders Victor Harbor
11-13 Victoria Street
VICTOR HARBOR, SA
08 8555 9000
RLA: 62833

Paul Smith
0417 624 833

Set on a generous allotment of approx. 707sqm, with an approx. frontage of 18.29 metres to Cakebread Road, this property provides the space and position to capitalise on one of Encounter Bay's most sought-after locations.

Opportunities like this are few and far between - secure your slice of coastal potential today!

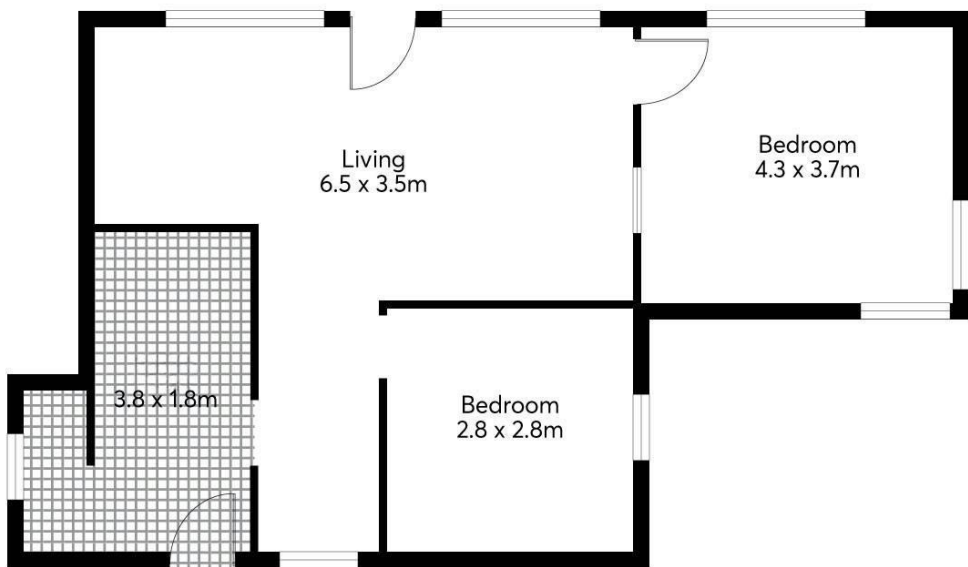
Disclaimer: We have in preparing this information used our best endeavours to ensure that the information contained herein is true and accurate but accept no responsibility and disclaim all liability in respect of any errors, omissions, inaccuracies or misstatements that may occur. Prospective purchasers should make their own enquiries to verify the information contained herein. RLA 62833

- Land Area 707.00 square metres
- Bedrooms: 2
- Bathrooms: 1









Area (estimate only)	
Living	67m ²
Total	67m ²

All information provided has been obtained from sources we believe to be accurate, however, we cannot guarantee the information is accurate and we accept no liability for any errors or omissions (including but not limited to a property's land size, floor plans and size, building age and condition). Interested parties should make their own enquiries and obtain their own legal and financial advice.