



888B Lochend Road, NEWMERELLA, VIC 3886

Premium 550-Acre Dairy Holding with 7km of Snowy River Frontage on 7 Titles!

222.58 hectares, 549.99 acres

An incredible and rare opportunity to secure one of East Gippsland's most productive and picturesque dairy holdings, located just minutes from Orbost. Spanning approximately 550 acres, the property comprises 220 acres of prime river flat country, 100 acres of fertile support flat, and a balance of reclaimable wetland â## all bound by an incredible 7 kilometres of Snowy River frontage.

The property is fully operational and exceptionally well presented, featuring a 30-unit rotary dairy currently milking 200+ cows, with a recent season yield of 1.6 million litres off 185 cows. Automatic cup removers, Auto wash system, easy Dairy auto draft, 7000lt vat with recently updated operating system, 26kw Solar system and back up generator. A well-designed gravel laneway system ensures all-weather access to paddocks, serviced by a 2" poly reticulation system with troughs in every paddock. Supporting infrastructure includes a 9m x 15m machinery shed, 10m x 15m hay shed, additional shedding, and poddy calf pens.

Water security is a standout feature, with town water connection, stock and domestic rights from the Snowy River, and effectively unlimited supply. The professionally

TYPE: For Sale

INTERNET ID: 300P187409

SALE DETAILS

**Expressions of Interest
closing 21st November
2pm**

CONTACT DETAILS

Colin Lane
0427 428 708

renovated 4-bedroom home offers comfortable and stylish family living or farm management accommodation, positioned to take in the surrounding farmland and river views.

Additional highlights include:

- * Updated dairy yards with undercover crush
- * Opportunity to walk in / walk out operation
- * 7 freehold titles
- * Option to purchase adjoining home and 17 acres (on separate title)

A truly complete and highly productive dairy enterprise ready for immediate takeover
â## combining scale, infrastructure, and the enviable lifestyle of Snowy River country.

Expressions of interest to be submitted in writing by 2pm 21st November 2025

For more information and section 32 contact Colin Lane at Elders Rural Bairnsdale

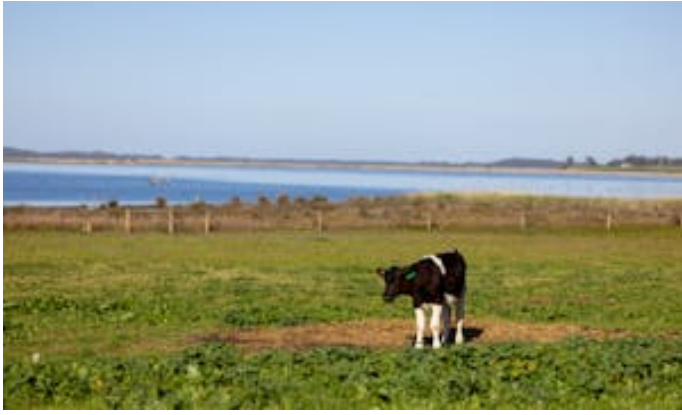
- Land Area 222.577103 hectares
- Bedrooms: 4
- Bathrooms: 2

HOMESTEAD

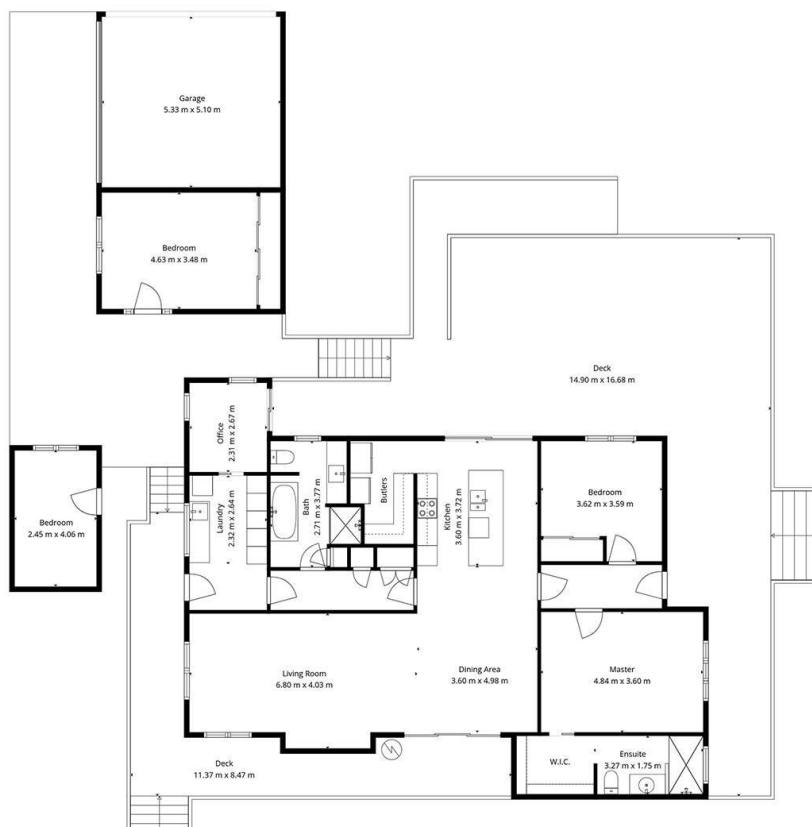
Bedrooms	4
Bathrooms	2











Plans are approximate and for illustrative purposes only. Actual dimensions may vary.

888B Lochend Rd, Newmerella

Elders Real Estate