

2/20 Easter Crescent, COCONUT GROVE, NT 0810

EASY LIVING IN EASTER!

Rock solid, spacious inside and out, one of two duplexes. This spacious unit is located at the end of the duplex with a fully fenced yard, an undercover carport, three large bedrooms with robes, a spacious open floorplan design with internal and external brick archways.

Solid construction with original tiling on the floors, bathroom and kitchen splash back which invoke a sense of retro nostalgia from the past. The duplex is primely positioned, walking distance to Nightcliff Shopping Centre, Jape Homemaker Village, minutes from the beach, local cafes, markets and central to other major and local amenities including public transport and a 10-minute drive to the Darwin CBD.

Features:

- Practical and functional open floor plan design.
- Elevated undercover front porch.
- Kitchen with walk in pantry

TYPE: For Rent

INTERNET ID: 300P187709

RENTAL DETAILS

Rent / Lease:

\$620 per week

CONTACT DETAILS

Darwin

70 Smith Street
DARWIN, NT
08 8946 0500

Leesy Hansen
0436 369 888

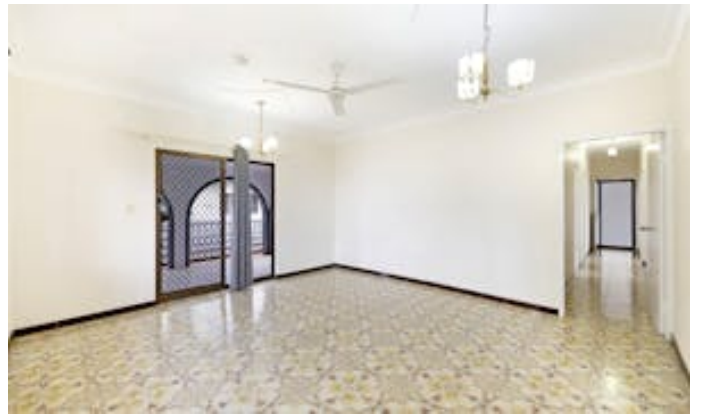
- Three large air-conditioned bedrooms with full sized built-in robes
- The bathroom is practical and complete with a bath.
- Split system, RAC air conditioning, security screen doors and security bars to the windows throughout
- External laundry
- Undercover carport
- Gated access to the rear yard
- Secure side and rear courtyard with green lawns
- Pet friendly
- (Being the end unit, there is extra space to park the boat or extra car)
- Available 04/11/2025

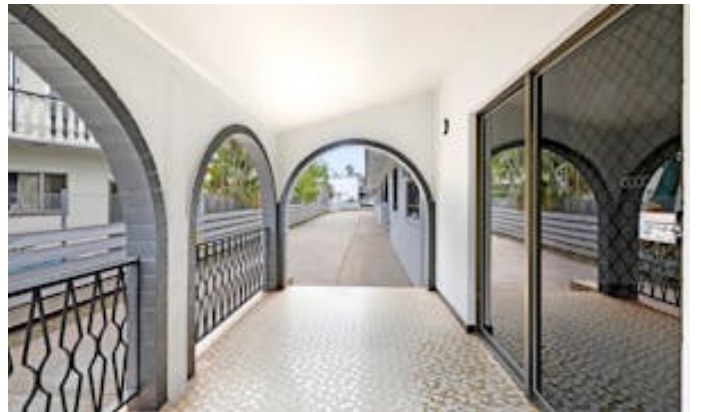
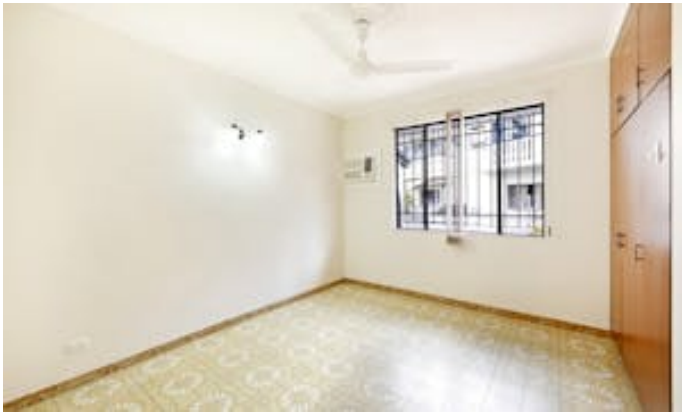
How to apply? A link will be sent via 2Apply once the property has been inspected.

Elders does NOT accept 1FORM applications. Please leave your details to register for the next available inspection.

Other features: Close to Schools, Close to Shops, Close to Transport

- This property is: Unfurnished
- Pets: Yes
- Available on: 04/11/25
- Bedrooms: 3
- Bathrooms: 1
- Car Parks: 2









Scale in metres. Indicative only. Dimensions are approximate. All information contained herein is gathered from sources we believe to be reliable. However we cannot guarantee its accuracy and interested persons should rely on their own enquiries.

2/20 Easter Crescent, Coconut Grove