



## 18 Second Street, SNOWTOWN, SA 5520

### Charming 1986 Brick Home with Modern Comforts

This solid 1986-built brick residence offers the perfect blend of classic character and contemporary convenience. Featuring three spacious bedrooms, this home is ideal for families, first-home buyers, or savvy investors. The updated bathroom and separate toilet add a fresh touch, while split system air conditioning and ceiling fans throughout ensure year-round comfort.

The well-appointed kitchen is both functional and stylish, seamlessly connecting to the adjoining dining area-perfect for everyday meals or hosting guests. A separate lounge provides a cozy retreat for relaxation or movie nights, offering flexibility in living spaces.

Step outside to discover a generous, fully fenced yard that's ideal for kids, pets, or weekend gardening. The rear verandah creates a welcoming space for entertaining, BBQs, or simply unwinding with a cuppa. A lock-up shed provides secure storage for tools and equipment, while the carport offers convenient off-road parking.

Located in a quiet, family-friendly neighbourhood, this home delivers lifestyle and practicality in equal measure. Whether you're looking to move straight in or add your own personal touches, this property is packed with potential and ready to welcome its next chapter.

The particulars contained herein are supplied for information only and shall not be taken as a representation in any respect on the part of the vendor or its agent. Interested parties should contact the nominated person or office for full and current details.

**TYPE:** For Sale

**INTERNET ID:** 300P188206

#### SALE DETAILS

**\$389,000**

#### CONTACT DETAILS

**Elders Real Estate Clare Valley / Burra**

230 Main North Road

Clare, SA

08 8842 9300

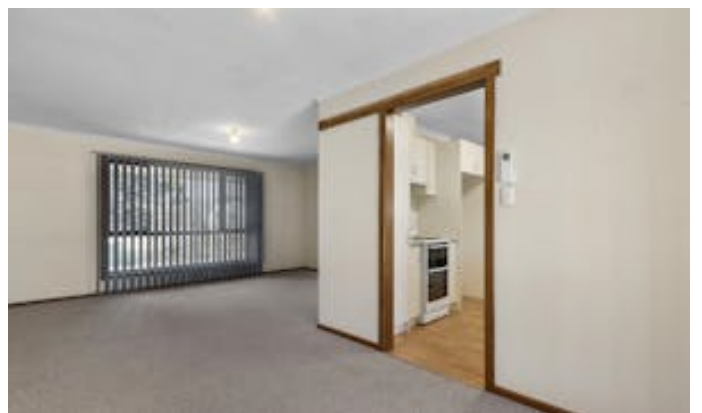
**Brooke Edmonds**

0408933100

Don't miss the opportunity to secure this charming brick beauty with all the essentials already in place.

- Land Area 1,012.00 square metre
- Bedrooms: 3
- Bathrooms: 1
- Car Parks: 4
- Single garage













Living:	110.47sqm
Verandah:	47.76sqm
Carport:	27.00sqm
Pergola:	6.00sqm
Garage:	24.00sqm
Total:	215.23sqm

This drawing is for illustration purposes only.  
All measurements are internal and approximate.  
Details intended to be relied upon should be  
independently verified.  
Produced by Open2view.com