

37 Morella Crescent, CAPE JERVIS, SA 5204

Wake Each Day to the Calm of the Coast

There is something magical about waking up to the vast blue sweep of the ocean with Kangaroo Island rising in the distance and cruise ships gliding through the Backstairs Passage.

At 37 Morella Crescent, this outlook is not a moment but a way of life. Set on 2.05 hectares of gently undulating land, this spacious family home offers peace, privacy, and an ever-changing coastal panorama that makes even ordinary days feel like a holiday.

Inside, the home opens with a generous sense of space. The large living and dining room frames the sea through picture windows, inviting you to pause, breathe, and take in the view. A second dining area sits alongside the kitchen, which works beautifully for casual meals, slow mornings, or a cosy night in with friends. The kitchen has excellent bench space a gas cooktop and plenty of storage for those who love to cook.

The main suite is its own retreat. It is expansive and light-filled with a peaceful coastal outlook. The walk-in robe is impressively sized, and the ensuite completes this private zone away from the home's activity. Three additional bedrooms sit in their own wing, each with ceiling fans and easy access to the main bathroom and laundry.

TYPE: For Sale

INTERNET ID: 300P189267

SALE DETAILS

\$750,000 to \$825,000

CONTACT DETAILS

Normanville

91 Main Road
Normanville, SA
08 8598 6100

Cassie Edwards
0400 856 900

Outdoor living is a real highlight here. Wide decks stretch across both the front and rear of the home, giving you choices to follow the sun, find the shade, or settle in and watch the landscape shift through the seasons. Entertain friends, enjoy long lunches, or unwind at the end of the day as the lights of Kangaroo Island begin to shimmer across the water.

Practical features ensure the property is easy to enjoy year-round. There are three large rainwater tanks, an Enviro Cycle septic system that recycles water to the garden, and a 6m x 6m shed with a concrete floor. There is ample space for veggie beds, fruit trees, or simply leaving the land as a natural habitat for local wildlife.

Set in a quiet pocket of Cape Jervis, the property offers a wonderful sense of escape while still being only minutes from beaches, boat ramps, Deep Creek National Park, and the relaxed coastal community that the area is known for.

If you have been searching for a home where the outlook restores you, the space inspires you, and the coastline feels close enough to touch, this is a place you will want to experience for yourself.

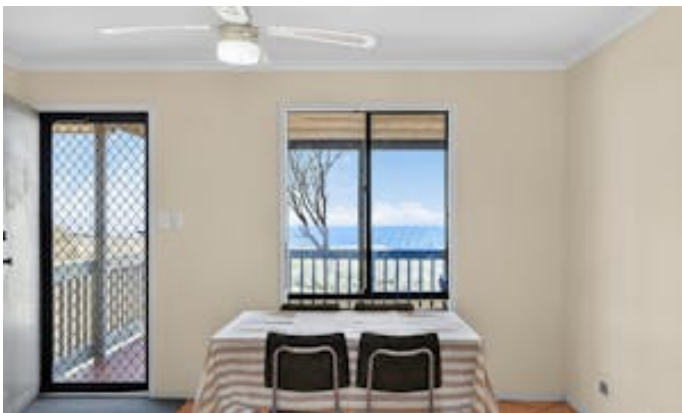
You are warmly invited to inspect and feel the calm, the light, and the incredible views that make this property truly special.

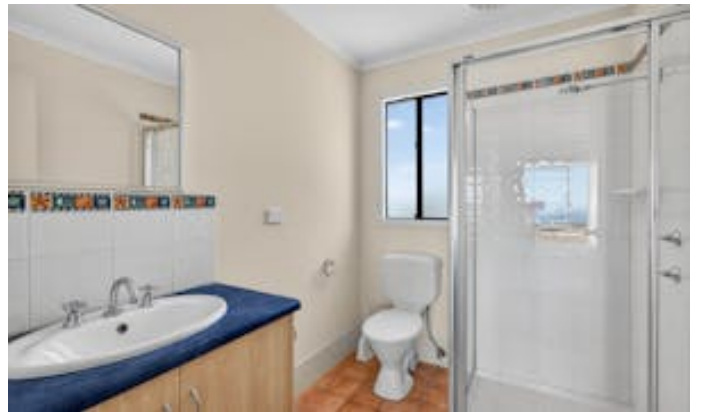
Call Cassie to book your inspection today and start planning the coastal lifestyle you've been dreaming of.

Disclaimer: We have in preparing this information used our best endeavours to ensure that the information contained herein is true and accurate but accept no responsibility and disclaim all liability in respect of any errors, omissions, inaccuracies or misstatements that may occur. Prospective purchasers should make their own enquiries to verify the information contained herein. RLA 62833

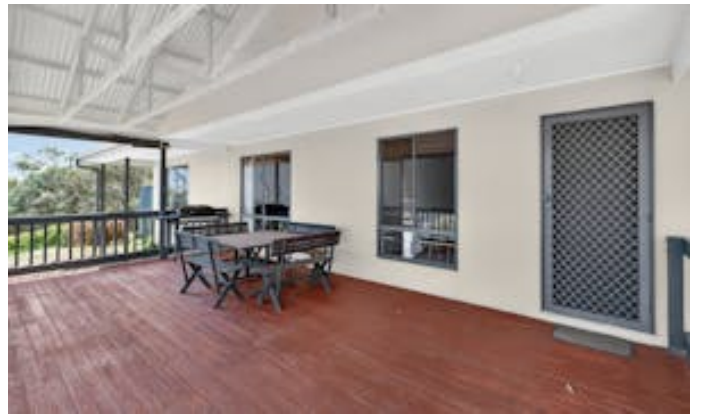
Other features: Area Views, Bush Retreat, Ocean Views, Openable Windows, Water Views

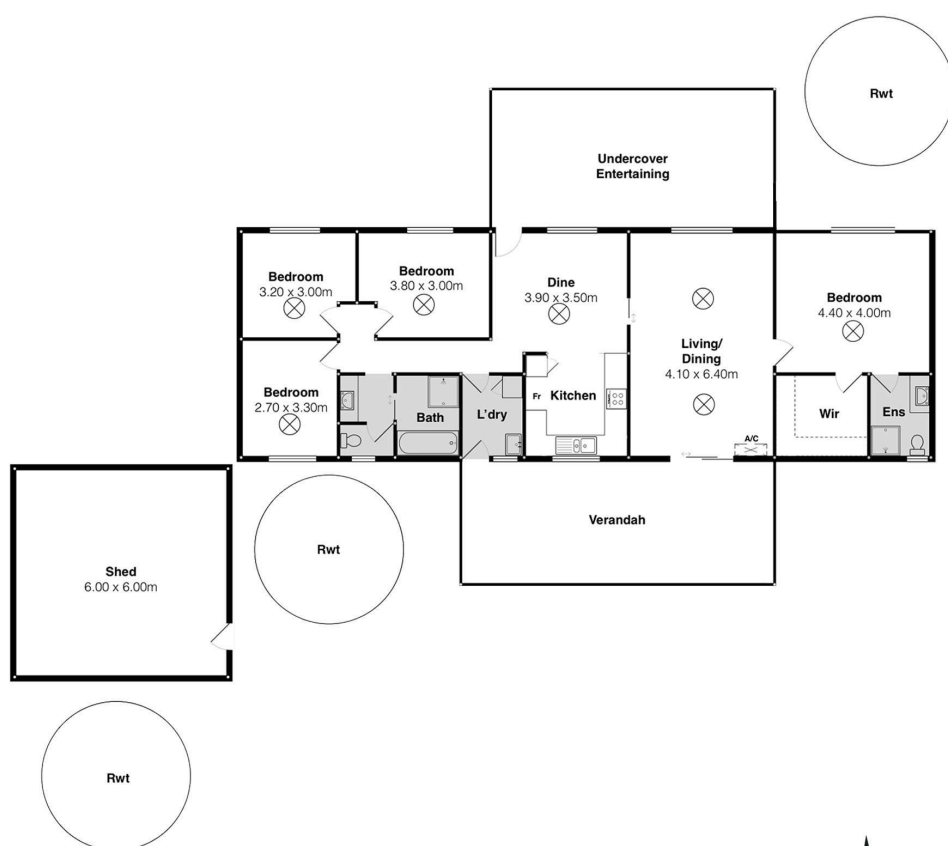
- Land Area 2.05 hectares
- Building Area: 160.00 square metres
- Bedrooms: 4
- Bathrooms: 2
- Single garage
- Ensuite











37 Morella Cres, Cape Jervis

Scale in metres. This drawing is for illustration purposes only. All measurements are approximate and details intended to be relied upon should be independently verified.



PRODUCED BY

