



7 Foy Street, EUROA, VIC 3666

Renovated Period Home with Direct Reserve Outlook and Walk-to-Town Convenience.

Overlooking the Seven Creeks and a short walk across the footbridge to the main street caf  s, restaurants, schools and 100 metres to the Seven Creeks Hotel.

This fully renovated 1940s home presents an outstanding opportunity in one of Euroa's most tightly held locations.

Set on a generous 1,013 m   allotment with direct outlook to the Seven Creeks Reserve, this quality residence combines period character with modern functionality.

The Home

*Three bedrooms plus upstairs loft (ideal study or fourth bedroom)

*Two bathrooms

*Polished timber floors and high ornate ceilings

*Renovated open plan kitchen with electric cooking, dishwasher, integrated fridge and butler's pantry/laundry

TYPE: For Sale

INTERNET ID: 300P189603

SALE DETAILS

\$850,000

CONTACT DETAILS

Euroa
27 Binney Street
EUROA, VIC
03 5795 2294

Donna Abbey
0488 694 807

*Dual light-filled living areas

*Reverse cycle heating and cooling

*Split system and gas log fire

*Excellent storage throughout

Outdoors

*Undercover decking overlooking the rear garden

*Established, manicured lawn, fruit trees and low maintenance garden

*Four vegetable garden beds

*Irrigation system

*Chook pen

*Converted third bedroom/home office or studio space

This flexible floorplan suits families, retirees and professionals working from home and seeking a quality lifestyle property within walking distance of town amenities.

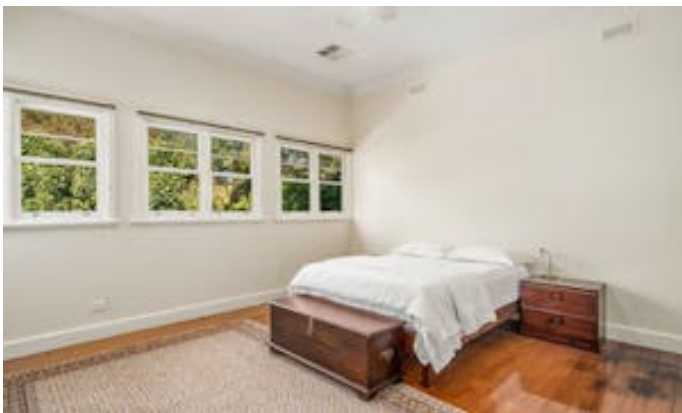
Direct access to the 7km Apex trail through creek flats and native riparian vegetation

A rare opportunity to secure a fully renovated period home in a premium Euroa location.

Other features: Area Views, Car Parking - Surface, Close to Schools, Close to Shops, Openable Windows, River Views

- Land Area 1,003.00 square metre
- Bedrooms: 3
- Bathrooms: 2
- Car Parks: 2
- Floorboards









7 FOY ST, EUROA



THE ABOVE PLAN IS AN ARTIST'S IMPRESSION ONLY, IT INCLUDES ELEMENTS THAT ARE FOR DISPLAY PURPOSES ONLY AND MAY NOT BE TO SCALE. LANDSCAPING SHOWN IS INDICATIVE ONLY. DIMENSIONS ARE APPROXIMATE.