



18 Lewis Street, EUROA, VIC 3666

Immaculate gardens & prime corner block in a great location

Perfectly positioned on the corner of Lewis Street and Palmer Avenue, this much-loved 1980s brick veneer home sits on a beautifully maintained corner block surrounded by immaculate gardens, established garden beds and productive plantings â## a picturesque setting for relaxed everyday living.

Inside, the home exudes warmth and character, with a welcoming living room highlighted by cathedral ceilings soaring to approximately 4.5 metres at the highest point, exposed timber beams, a flood of natural light and a cosy wood heater. The open-plan layout flows through to the dining area and well-appointed kitchen, which features a gas cooktop, dishwasher and excellent storage, creating an easy, functional space for family life and entertaining. Year-round comfort is assured with ducted evaporative cooling and gas heating throughout the home.

Accommodation is generous, with three comfortable bedrooms â## two fitted with built-in robes and the main bedroom boasting a walk-in robe. All three bedrooms include ceiling fans for added comfort. The updated bathroom with separate toilet, enormous laundry and ample storage throughout further enhance the practicality and appeal of the property. At the front, an undercover carport provides convenient off-street parking.

TYPE: For Sale

INTERNET ID: 300P189616

SALE DETAILS

\$565,000

CONTACT DETAILS

Euroa

27 Binney Street
EUROA, VIC
03 5795 2294

Brendan Allen
0499 229 007

Outdoor living is a standout, with an inviting alfresco area on the western side of the home, ideal for evening meals and gatherings. The garden is thoughtfully established with elevated veggie boxes and mature fruit trees for those who love to grow their own produce. A powered shed with concrete floor, accessed from Palmer Avenue, offers excellent space for a workshop, hobbies or additional storage, while the gas hot water system adds everyday convenience. Rich in character, comfort and lifestyle appeal, 18 Lewis Street is ready for its next chapter.

Other features: Close to Schools, Close to Shops

- Land Area 808.00 square metres
- Bedrooms: 3
- Bathrooms: 1
- Single carport

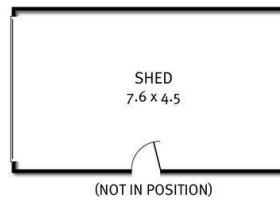
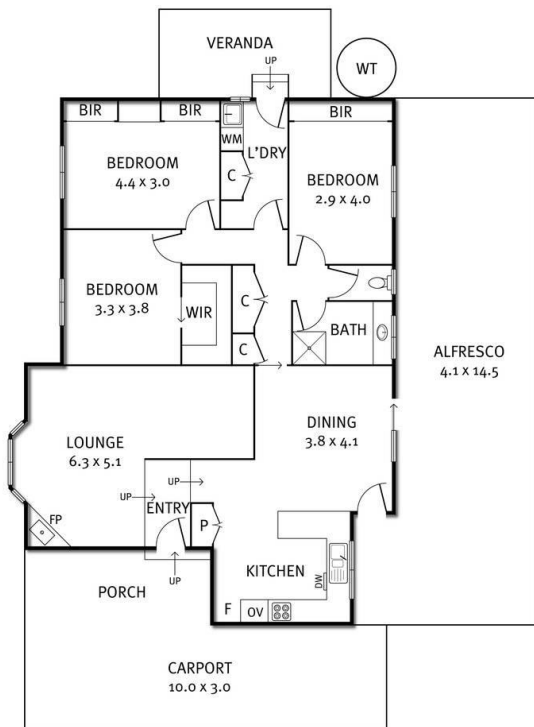






18 Lewis Street, Euroa

Elders



THE ABOVE PLAN IS AN ARTIST'S IMPRESSION ONLY, IT INCLUDES ELEMENTS THAT ARE FOR DISPLAY PURPOSES ONLY AND MAY NOT BE TO SCALE. LANDSCAPING SHOWN IS INDICATIVE ONLY. DIMENSIONS ARE APPROXIMATE.