



18 Platinum Drive, PARK GROVE, TAS 7320

Exceptional Living in Popular Platinum Drive

Welcome to 18 Platinum Drive, where modern family living meets standout style in one of Park Grove's most coveted pockets. From the street, the home's quality brick build, wide driveway and clean lines set the tone for what's inside's space, light and effortless comfort.

Step through the door and the first thing you'll notice is the sense of openness. 9-foot ceilings and sun-soaked living zones give the home an airy, welcoming feel, while the layout flows naturally to the star of the show: a huge entertaining deck made for long lunches, summer nights and weekend gatherings. This is the kind of space that becomes everyone's favourite spot.

Inside, the home features four bedrooms and three bathrooms, offering incredible flexibility for families of all shapes and sizes. Whether you need room for guests, teenagers, a home office or a creative space, this floor plan has you covered. The master suite provides that little luxury escape, while the remaining bedrooms are generously sized and well-separated for privacy.

Practicality is another big win here. A double garage with internal access, great storage and a conveniently wide driveway makes daily life smooth and easy. Out the back, the

The particulars contained herein are supplied for information only and shall not be taken as a representation in any respect on the part of the vendor or its agent. Interested parties should contact the nominated person or office for full and current details.

TYPE: For Sale

INTERNET ID: 300P189694

SALE DETAILS

Offers Over \$980,000

CONTACT DETAILS

Elders Real Estate Burnie

72-74 Wilson Street
Burnie, TAS
03 6432 2311

Bruce Jubb
0417987828

large backyard gives you room to moveâ##perfect for kids, pets, gardens, or future plans.

And of course, the location speaks for itself. Park Grove is one of Burnieâ##s most loved suburbs, with schools, the hospital, the uni, cafÃ©s and coastline all within minutes. Itâ##s safe, convenient and incredibly hard to secure a home inâ##especially one as well-rounded as this.

Modern, spacious, and designed for real life, 18 Platinum Drive brings together everything buyers want in todayâ##s market. Homes like this donâ##t stay on the sidelines for long.

DISCLAIMER: While Elders Real Estate Burnie has taken every care to verify the accuracy of the details in this advertisement, we cannot guarantee its correctness. Prospective buyers or tenants need to take such action as is necessary, to satisfy themselves of any pertinent matters

- Land Area 997.00 square metres
- Building Area: 326.00 square metres
- Bedrooms: 4
- Bathrooms: 3
- Car Parks: 3
- Double garage







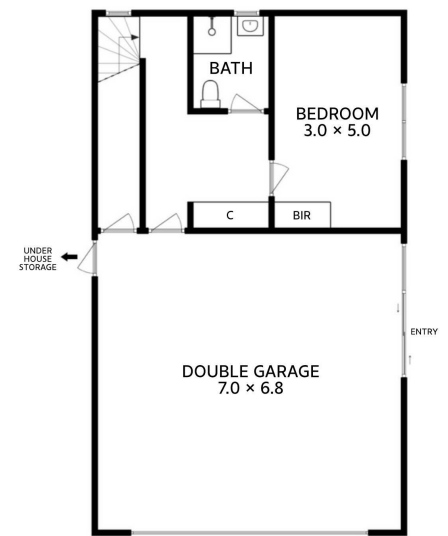




18 Platinum Drive
Park Grove



Upstairs Approx. 240 sq m



Downstairs Approx. 86 sq m

Approx. Total Floor Area 326 sq m

All measurements are internal and approximate.
This plan is a sketch for illustration, not valuation.

