



37 Mansfield Road, EUROA, VIC 3666

Classic Three-Bedroom Home on a Generous Allotment

Set on a generous allotment of approximately 930m², this well-positioned property offers an excellent opportunity for buyers looking to enter the market, invest, or update a home to suit their own style.

Held by the same family for more than 40 years, the home has been the setting for many years of memories and is now ready for its next chapter.

The home remains in largely original condition, providing a great foundation for buyers wanting to renovate or modernise over time while enjoying a comfortable place to live. Inside you will find three bedrooms, a central bathroom, functional kitchen and a spacious living room with fireplace, creating a warm and practical living space.

A covered rear patio provides a sheltered outdoor area, while the established yard offers plenty of space for gardening, outdoor living or further improvements. The property also includes a separate garage and chicken coop, adding to the practicality of the block.

Positioned in a convenient location along Euroa's Mansfield Road, the home is just a

The particulars contained herein are supplied for information only and shall not be taken as a representation in any respect on the part of the vendor or its agent. Interested parties should contact the nominated person or office for full and current details.

TYPE: For Sale

INTERNET ID: 300P189695

SALE DETAILS

\$370,000 - \$405,000

CONTACT DETAILS

Euroa

27 Binney Street
EUROA, VIC
03 5795 2294

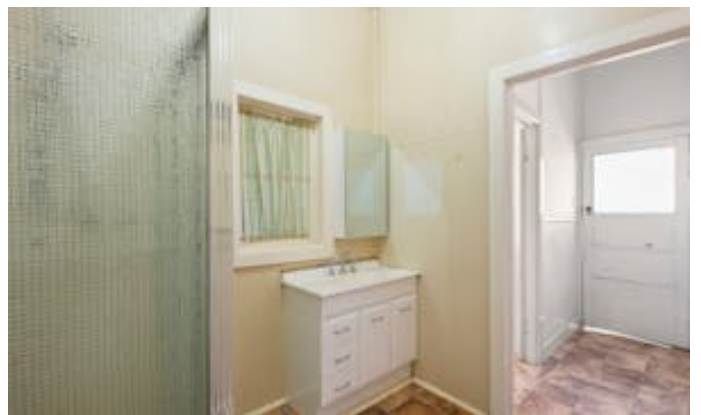
Donna Abbey
0488 694 807

short drive from Euroa's town centre, schools, shops and local amenities.

With its generous block size, practical layout and scope to improve, this property presents a wonderful opportunity for buyers looking to secure a home with character, history and potential in a welcoming regional community.

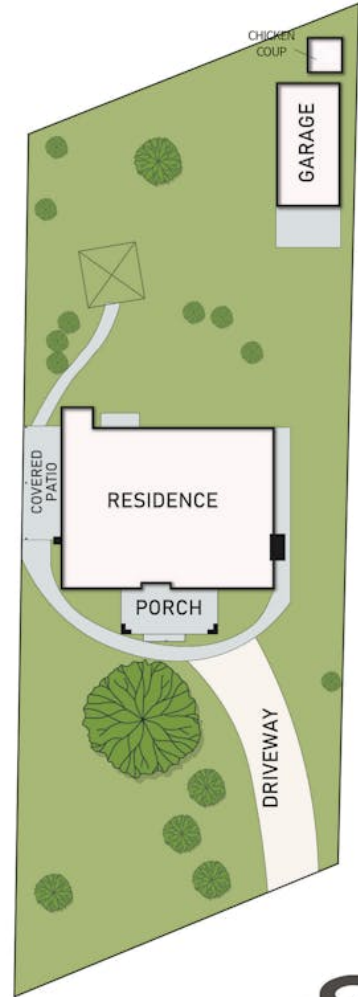
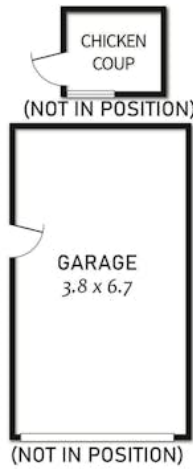
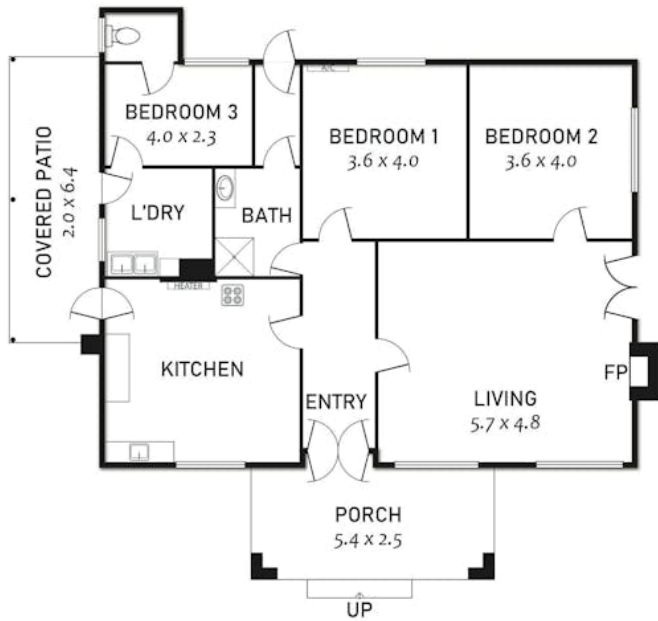
Other features: Close to Schools, Close to Shops, Close to Transport, Openable Windows

- Land Area 930.00 square metres
- Bedrooms: 3
- Bathrooms: 1
- Car Parks: 2





37 Euroa-Mansfield Road



THE ABOVE PLAN IS AN ARTIST'S IMPRESSION ONLY, IT INCLUDES ELEMENTS THAT ARE FOR DISPLAY PURPOSES ONLY AND MAY NOT BE TO SCALE. LANDSCAPING SHOWN IS INDICATIVE ONLY. DIMENSIONS ARE APPROXIMATE.