



1046 Murchison Highway, ELLIOTT, TAS 7325

The Lifestyle Property That Actually Delivers

If you've been searching for a property that offers more than just a home, this is the one that delivers.

Set on an impressive approx. 9,718m² of level land, 1046 Murchison Highway combines lifestyle, practicality and space in a way that's becoming increasingly difficult to find. Framed by a peaceful rural outlook and distant sea views, this is a property where there's room to breathe, room to grow and room for all the extras.

At the heart of the home is a spacious, sun-filled living area, bathed in natural light and perfectly positioned to take in the surrounding outlook. Whether you're enjoying your morning coffee as the sun streams in or unwinding at the end of the day, it's a space designed to be lived in and enjoyed. The home offers three bedrooms and two bathrooms, with the comfort of air conditioning and a gas log fire ensuring year-round enjoyment.

Outside, the property truly sets itself apart. Offering an incredible seven garage spaces, including oversized bays ideal for caravans, boats, trucks and machinery, this is a setup that will excite tradies, hobbyists, collectors and anyone craving serious storage. The expansive asphalted area in front provides outstanding accessibility and ample room for

The particulars contained herein are supplied for information only and shall not be taken as a representation in any respect on the part of the vendor or its agent. Interested parties should contact the nominated person or office for full and current details.

TYPE: For Sale

INTERNET ID: 300P189696

SALE DETAILS

Offers Over \$799,000

CONTACT DETAILS

Elders Real Estate Burnie

72-74 Wilson Street

Burnie, TAS

03 6432 2311

Bruce Jubb

0417987828

additional vehicles, equipment or business operations.

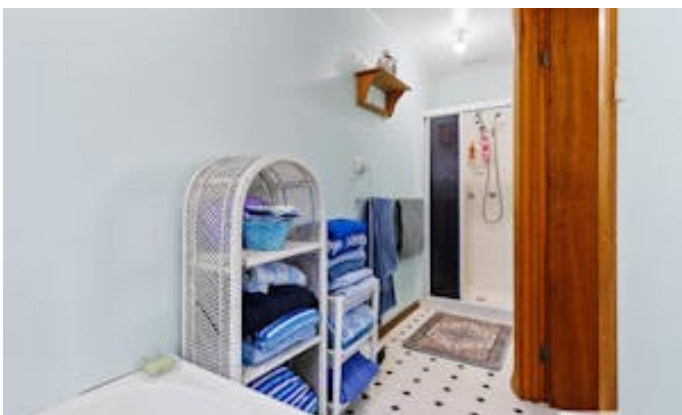
Adding to the appeal is a substantial 40-panel solar system, helping to keep energy costs down, while the established orchard delivers an abundance of fresh fruit right from your own backyard. A large shed, complete with its own wood heater, creates the ultimate workshop, storage space or retreat for projects and hobbies.

Properties offering this level of flexibility are few and far between. Whether you're seeking a lifestyle change, space for a growing collection of vehicles and equipment, or simply a property that gives you the freedom to spread out and enjoy life, this is an opportunity that's hard to ignore.

DISCLAIMER: While Elders Real Estate Burnie has taken every care to verify the accuracy of the details in this advertisement, we cannot guarantee its correctness. Prospective buyers or tenants need to take such action as is necessary, to satisfy themselves of any pertinent matters

- Land Area 9,718.00 square metres
- Building Area: 137.00 square metres
- Bedrooms: 3
- Bathrooms: 2
- 6 car garage

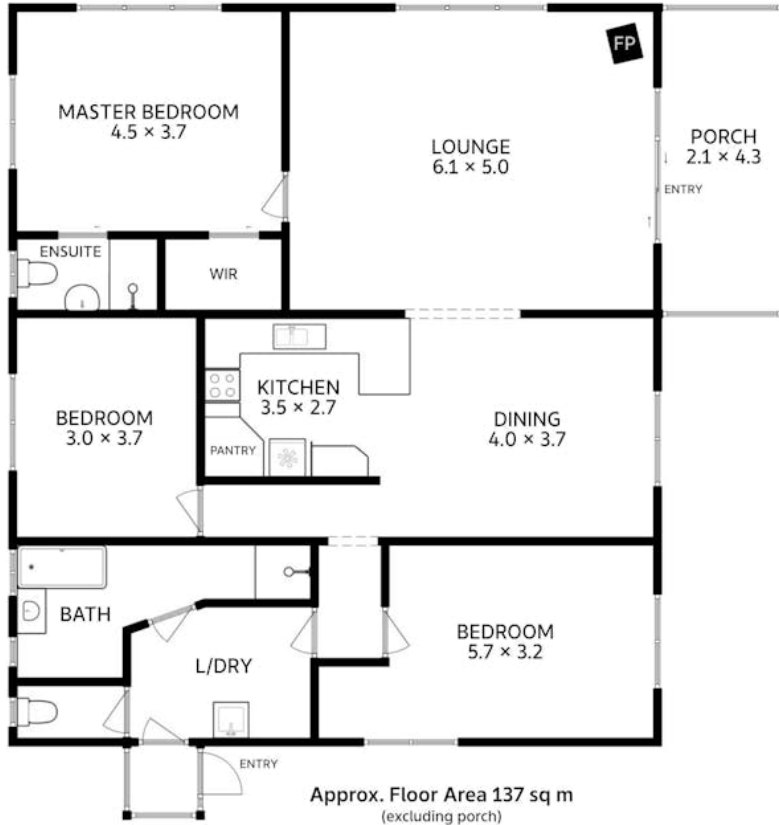








1046 Murchison Hwy
Elliott

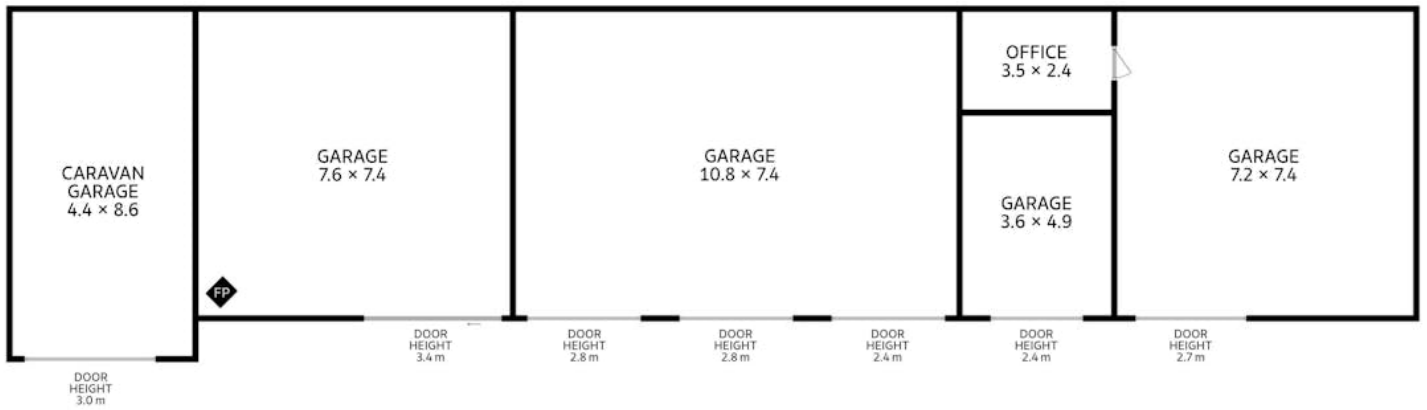


All measurements are internal and approximate.
This plan is a sketch for illustration, not valuation.





1046 Murchison Hwy
Elliott



All measurements are internal and approximate.
This plan is a sketch for illustration, not valuation.

