



775C North Bremer Road, HARTLEY, SA 5255

Live the Australian Dream – Sheep Farming, Saltbush Country & Endless Rural Freedom

30.52 hectares, 75.41 acres

A Rare 30.52 HA / 74.75-Acre Lifestyle Opportunity in Hartley

Set at the very end of the road, where peace, privacy, and sweeping country vistas await, this exceptional 74.75-acre property in sought-after Hartley offers a truly authentic slice of the Australian dream. Renowned for its rich history in sheep farming, this land tells a story-acres and acres of gently rolling farmland once harvested and grazed, with thriving stands of nutritious saltbush, long celebrated as both a hardy feed source and a valuable supplementary income stream.

Here, you can wake to the sun rising over your own broad acreage, watch your stock graze across well-kept paddocks, and live out the lifestyle so many imagine but so few ever achieve: running your own farm, breathing in clean country air, and embracing a life defined by space, independence, and rural pride.

The welcoming four-bedroom, one bathroom home has been thoughtfully refreshed with new flooring and curtains, offering warm, contemporary comfort. A spacious lounge

TYPE: For Sale

INTERNET ID: 300P189744

SALE DETAILS

REDUCED TO SELL
\$1,175,000

CONTACT DETAILS

Sylvia Jemson-Ledger
Hills & Fleurieu
0487 301 390

and dining area forms the heart of the home, complete with a cosy combustion heater for crisp winter mornings and a split-system air conditioner to keep you comfortable year-round. Energy costs stay impressively low thanks to an efficient 11.2 kW solar system.

Water security is exceptional-a critical asset for any working farm.

- A reliable bore supplies good-quality water at approx. 1200 ppm.
- The original well at the windmill remains intact, with all pumping components ready for use.
- Around 168,000 litres of rainwater storage is linked across the property.
- The windmill pumps water from house tanks to elevated storage tanks, providing gravity-fed water to every paddock and the home-even during power outages or dry spells.

The land itself is beautifully maintained and thoughtfully laid out. Seven fenced paddocks support grazing, livestock rotation, or hobby farming, allowing you to raise sheep-just as the property has done proudly for generations-or explore new agricultural opportunities enhanced by the naturally occurring saltbush.

For those with machinery or ambitious rural projects, the state-of-the-art 9m x 18m shed is a standout, featuring 3.8m walls, a 4.5m high door, full concrete flooring, and two-phase power-perfect for trucks, horse floats, off-road caravans, or large farm equipment. Additional infrastructure includes a 12m x 8m powered and watered shed, previously used for turkey breeding, offering flexibility for animals, storage, or future ventures.

A large, established vegetable garden and well-designed chicken coop complete the picture for those seeking a self-sufficient lifestyle-grow your food, collect fresh eggs, and enjoy a level of independence few properties can match.

Whether you dream of running sheep, cultivating saltbush, giving your family the freedom to roam and explore, or simply claiming your own private country sanctuary, this remarkable Hartley acreage delivers it all. Quiet, productive, and beautifully positioned, it offers a rare opportunity to secure your own piece of rural paradise.

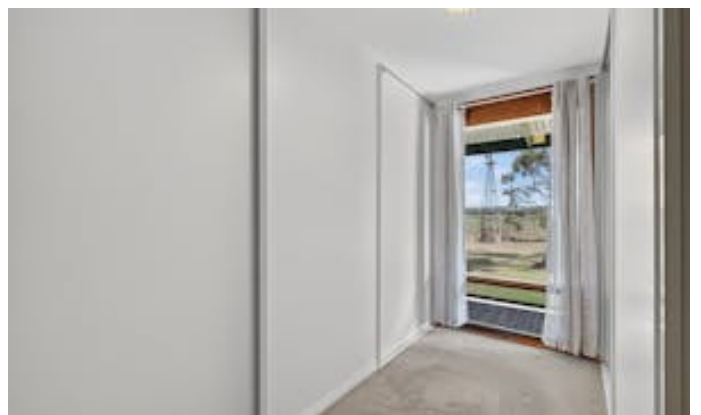
NB VIRTUAL FURNITURE HAS BEEN USED IN SOME OF THE PHOTOGRAPHY

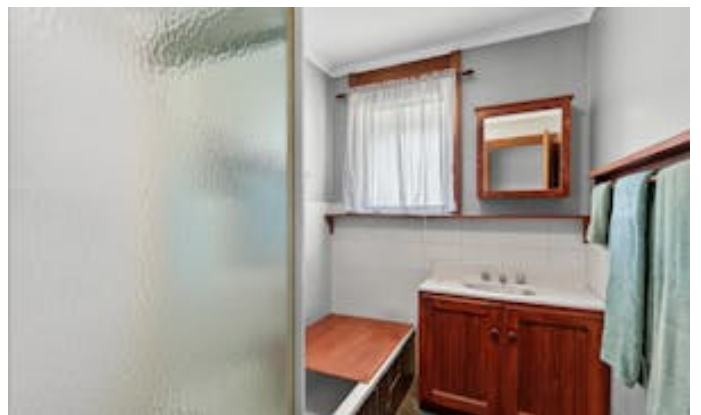
Disclaimer: We have in preparing this information used our best endeavours to ensure that the information contained herein is true and accurate but accept no responsibility and disclaim all liability in respect of any errors, omissions, inaccuracies or misstatements that may occur. Prospective purchasers should make their own enquiries to verify the information contained herein. RLA 62833

- Land Area 30.52 hectares
- Bedrooms: 4
- Bathrooms: 1

HOMESTEAD

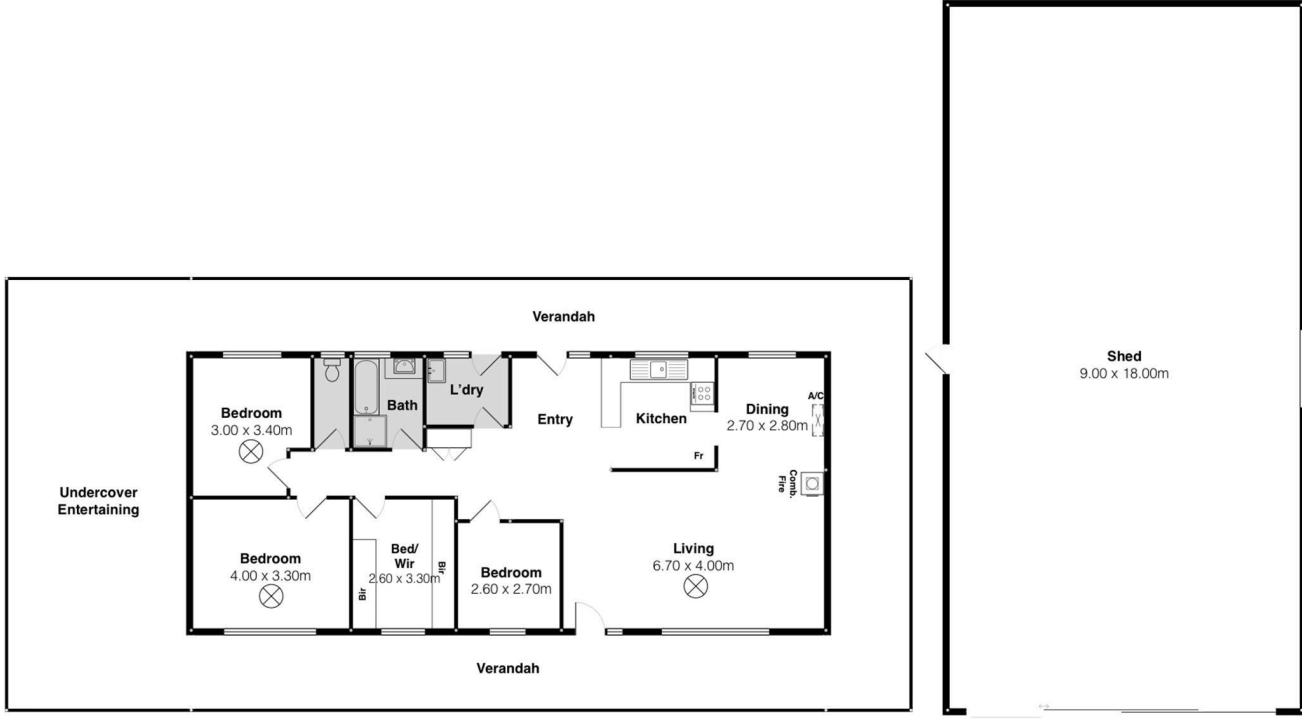
Bedrooms	4
Bathrooms	1











775C N Bremer Rd, Hartley

Scale in metres. This drawing is for illustration purposes only. All measurements are approximate and details intended to be relied upon should be independently verified.



PRODUCED BY

SOUTH COAST STUDIOS