

9 Hermitage Court, NURIOOTPA, SA 5355

Quiet Cul-de-Sac Living with Room for the Whole Family

Positioned in a peaceful cul-de-sac just minutes from the local shopping centre, this well-kept brick veneer, stone-fronted home offers space, comfort and practicality for everyday living. Built in 2000, it has been thoughtfully designed for families who value light-filled interiors and easy functionality.

At the heart of the home is a generous open-plan kitchen, dining and living area, complemented by a separate lounge - an ideal retreat if you need a bit of quiet time. The solid timber-fronted kitchen is equipped with gas hotplates, rangehood, wall oven, walk-in pantry and a large breakfast bar, giving you excellent storage and workspace. The master bedroom includes its own ensuite and walk-in robe, while the other bedrooms are serviced by a three-way bathroom. A spacious laundry adds to the home's overall usability. Climate control is well catered for with gas heating, ducted evaporative cooling, ceiling fans and insulation to both ceilings and external walls.

Outside, the property comes with a rainwater tank, garden shed and solar. A generous double garage with drive-through access provides secure entry to the backyard - perfect for trailers and easy garden access.

Well maintained and superbly located, this home delivers the lifestyle many buyers are

The particulars contained herein are supplied for information only and shall not be taken as a representation in any respect on the part of the vendor or its agent. Interested parties should contact the nominated person or office for full and current details.

TYPE: For Sale

INTERNET ID: 300P190167

SALE DETAILS

\$720,000

CONTACT DETAILS

Barossa

127 Murray Street

Tanunda, SA

(08) 8562 2883

RLA: 62833

David Kanizay

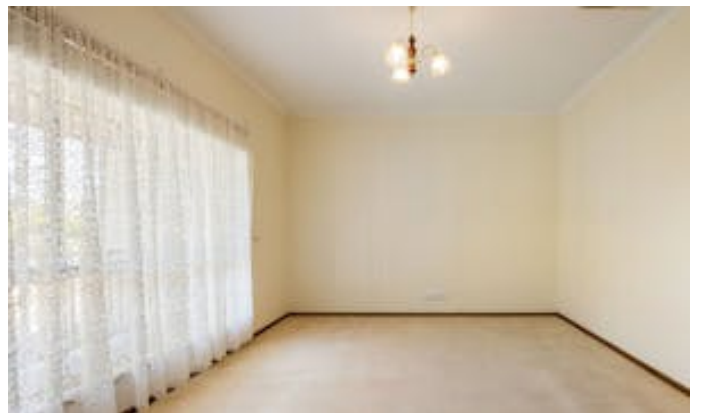
0408 834 586

seeking: quiet, convenient and ready to move straight into.

Disclaimer:

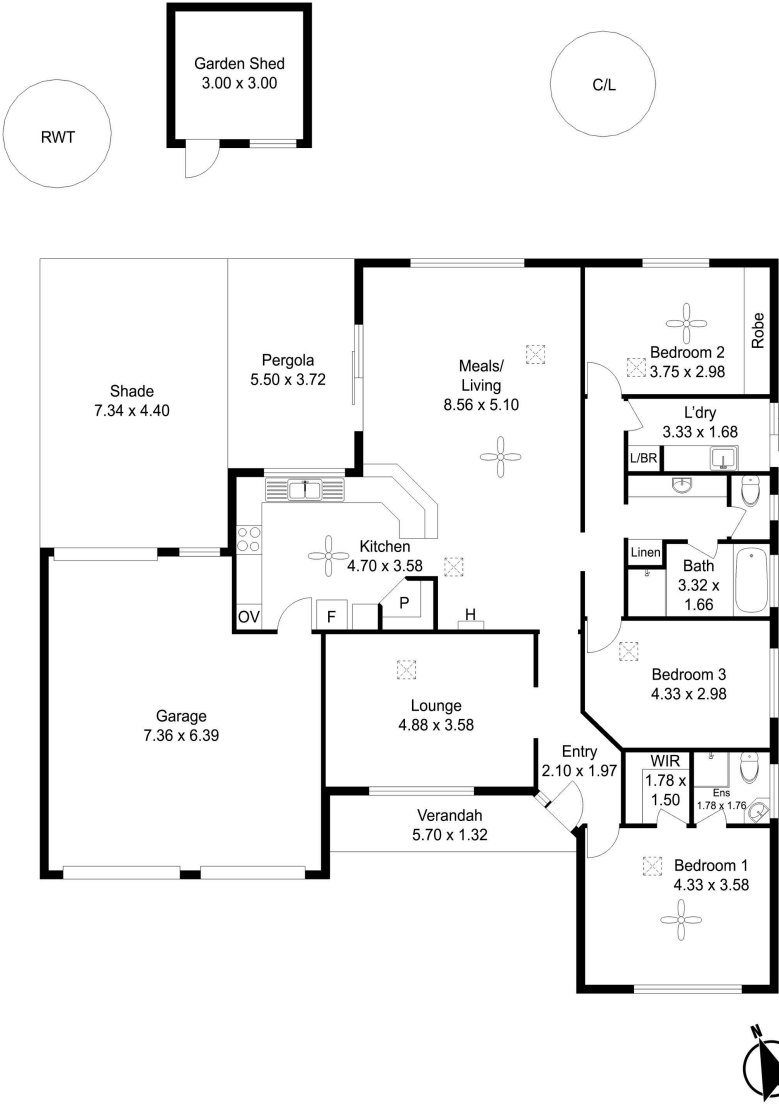
We have in preparing this information used our best endeavours to ensure that the information contained herein is true and accurate but accept no responsibility and disclaim all liability in respect of any errors, omissions, inaccuracies, or misstatements that may occur. Prospective purchasers should make their own enquiries to verify the information contained herein. Elders Real Estate RLA62833

- Land Area 709.00 square metres
- Building Area: 200.00 square metres
- Bedrooms: 3
- Bathrooms: 2
- Double garage









9 Hermitage Court, Nuriootpa

Living:	151 m ²
External:	103 m ²
Shed:	9 m ²
Total:	263 m ²

Disclaimer: All measurements are approximate and are provided for illustrative purposes only. While every effort has been made to ensure accuracy, actual dimensions may vary. Interested parties should conduct their own enquiries.