



32 Overall Street, SULPHUR CREEK, TAS 7316

A Smart, Stylish Home in a Quiet Street

Welcome to 32 Overall Street, Sulphur Creek - a home that delivers relaxed coastal living with a layout that simply works. Whether you're entertaining friends, raising a family or chasing a low-maintenance lifestyle by the sea, this one ticks all the right boxes.

Step inside to a bright, open-plan kitchen, dining and living zone that becomes the true heart of the home. Designed for connection and comfort, this space flows effortlessly outdoors to a covered alfresco area - perfect for weekend BBQs, lazy summer dinners or morning coffees in the fresh coastal air.

Three well-proportioned bedrooms provide comfortable accommodation for all, each featuring built-in wardrobes. The master suite is your own private escape, complete with a walk-in robe and ensuite. A modern central bathroom services the remaining bedrooms with ease.

Set in a quiet, family-friendly street just moments from everything Sulphur Creek has to offer and just a short drive from Penguin or Burnie, this home combines style, simplicity and location in one very smart package. Move straight in, relax and start enjoying the lifestyle.

The particulars contained herein are supplied for information only and shall not be taken as a representation in any respect on the part of the vendor or its agent. Interested parties should contact the nominated person or office for full and current details.

TYPE: For Sale

INTERNET ID: 300P190356

SALE DETAILS

Offers Over \$680,000

CONTACT DETAILS

Elders Real Estate Burnie

72-74 Wilson Street
Burnie, TAS
03 6432 2311

Bruce Jubb
0417987828

DISCLAIMER: While Elders Real Estate Burnie has taken every care to verify the accuracy of the details in this advertisement, we cannot guarantee its correctness. Prospective buyers or tenants need to take such action as is necessary, to satisfy themselves of any pertinent matters

- Land Area 542.00 square metres
- Building Area: 150.00 square metres
- Bedrooms: 3
- Bathrooms: 2
- Double garage

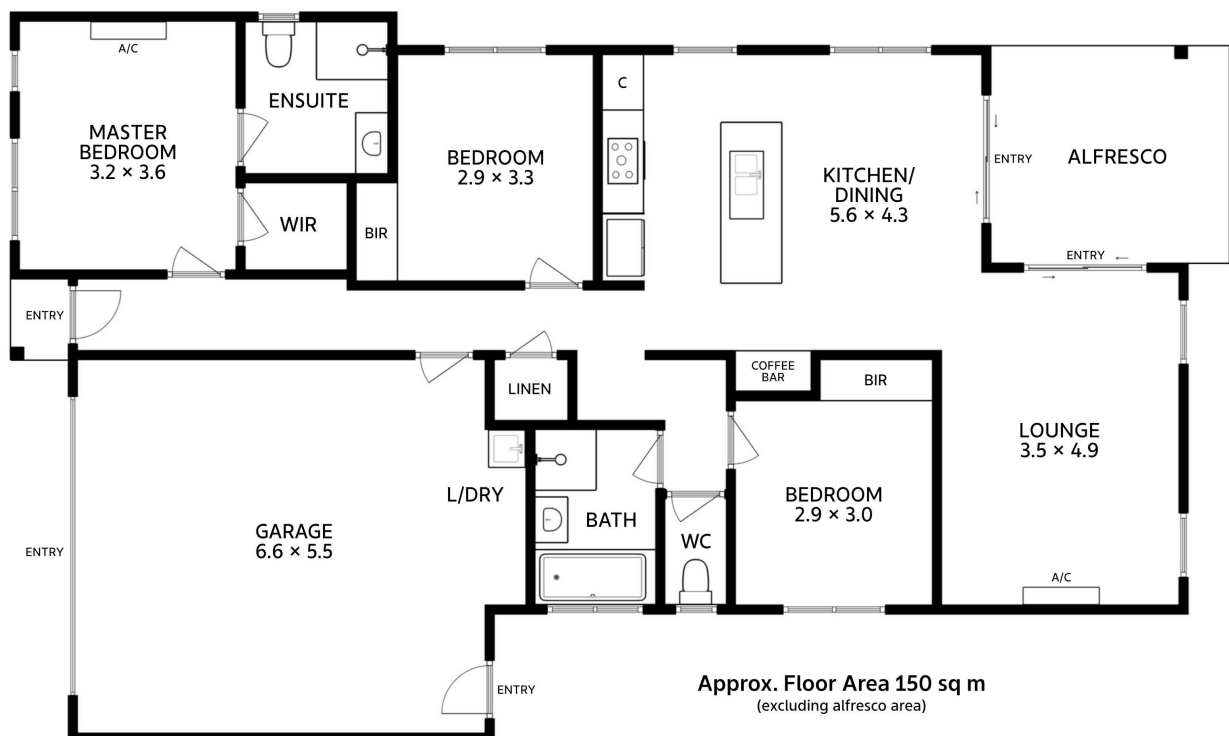








32 Overall Street
Sulphur Creek



All measurements are internal and approximate.
This plan is a sketch for illustration, not valuation.

