



## 11 Lorrie Place, PARK GROVE, TAS 7320

### Refined Living in Prestigious Park Grove

Tucked away in a peaceful and highly desirable Park Grove enclave, 11 Lorrie Place delivers a refined blend of space, comfort, and effortless sophistication—perfectly suited to modern family living.

The home offers four beautifully proportioned bedrooms, each appointed with built-in wardrobes. The master suite is a true sanctuary, featuring a private ensuite and a walk-in wardrobe, creating a refined and functional retreat designed for comfort and privacy. A central bathroom of elegant design services the remaining bedrooms, complemented by an additional separate toilet for enhanced convenience.

Designed with both form and function in mind, the heart of the home unfolds into an expansive open-plan kitchen, dining, and living domain. This beautifully connected space is ideal for entertaining and everyday living, flowing seamlessly onto a large sun-soaked deck—an inviting setting to relax, host guests, or enjoy long afternoons in the sun.

Two separate lounge areas provide versatility and a sense of understated luxury, offering multiple spaces to unwind, entertain, or retreat in comfort.

**TYPE:** For Sale

**INTERNET ID:** 300P190381

#### SALE DETAILS

**Offers Over \$1,050,000**

#### CONTACT DETAILS

**Elders Real Estate Burnie**

72-74 Wilson Street  
Burnie, TAS  
03 6432 2311

**Bruce Jubb**  
0417987828

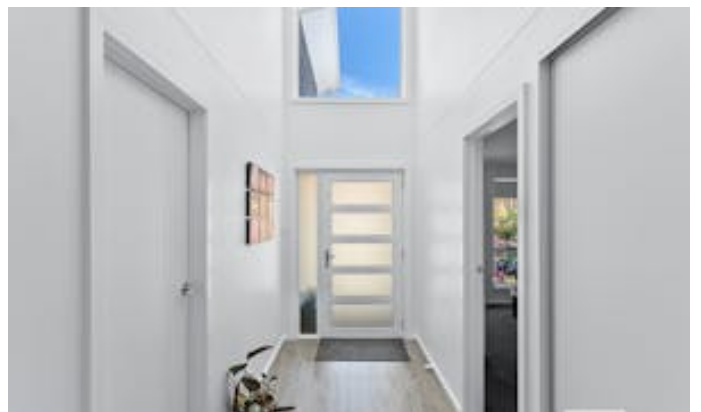
A double garage ensures secure parking and everyday convenience, while extensive under-house storage with roller door access further enhances the home's functionality-ideal for additional storage, workshop space, or hobby use plus beautifully present lawns and gardens surround the home.

Positioned in an excellent location close to the hospital, schools, shopping, and essential amenities, this impeccably presented home represents an outstanding opportunity to secure a premium lifestyle in one of Park Grove's most sought-after locations.

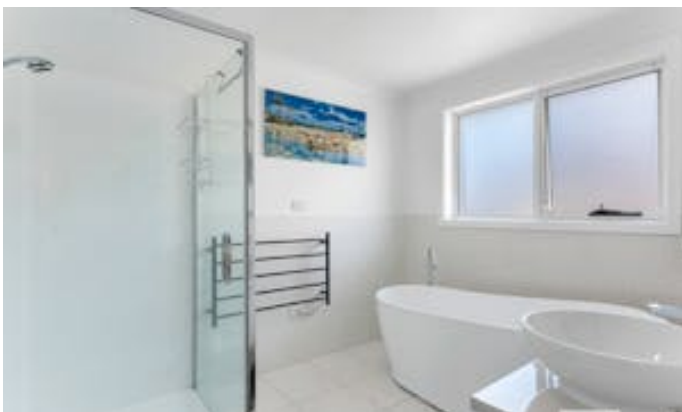
DISCLAIMER: While Elders Real Estate Burnie has taken every care to verify the accuracy of the details in this advertisement, we cannot guarantee its correctness. Prospective buyers or tenants need to take such action as is necessary, to satisfy themselves of any pertinent matters

- Land Area 805.00 square metres
- Building Area: 266.00 square metres
- Bedrooms: 4
- Bathrooms: 2
- Double garage













11 Lorrie Place  
Park Grove



All measurements are internal and approximate.  
This plan is a sketch for illustration, not valuation.

