



## 157 Berrymans Road, GOSSE, SA 5223

APPEALING COUNTRY ESTATE, GOSSE

**27.11 hectares, 67.00 acres**

- 27 ha (67 acres) approximately half cleared, fenced into 2 paddocks
- 2 dams, and permanent water in the creek line.
- 3 bedroom, 1 bath room home set in leafy surrounds.
- A feature is the 9 x 7 metre (approx.) freestone extension, with high raked ceilings, providing a spacious living area.
- Stylishly renovated bathroom
- Mains power
- 56,000 litres rainwater storage.
- 60x 20 shed adjacent homestead, concrete floor, powered, with separate storage area one end.
- Located 5 km from the bitumen at the Gosse crossroads (27 km west of Parndana)

**TYPE:** For Sale

**INTERNET ID:** 300P190416

**SALE DETAILS**

**\$910,000**

**CONTACT DETAILS**

**Elders Real Estate  
Kangaroo Island**  
12 Telegraph Road  
KINGSCOTE, SA  
08 8551 4108  
RLA: 62833

**Colin Hopkins**  
0408 393 991

The particulars contained herein are supplied for information only and shall not be taken as a representation in any respect on the part of the vendor or its agent. Interested parties should contact the nominated person or office for full and current details.

- Rainfall over 50 years averages 800mm/annum.
- Zoned Rural

Disclaimer: We have in preparing this information used our best endeavours to ensure that the information contained herein is true and accurate but accept no responsibility and disclaim all liability in respect of any errors, omissions, inaccuracies, or misstatements that may occur. Prospective purchasers should make their own enquiries to verify the information contained herein. Elders Real Estate RLA62833

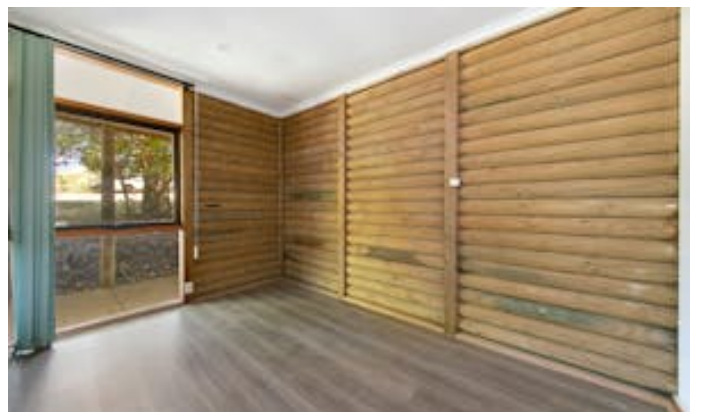
- Land Area 27.113938 hectares
- Bedrooms: 3
- Bathrooms: 1



**HOMESTEAD**

<b>Bedrooms</b>	<b>3</b>
<b>Bathrooms</b>	<b>1</b>







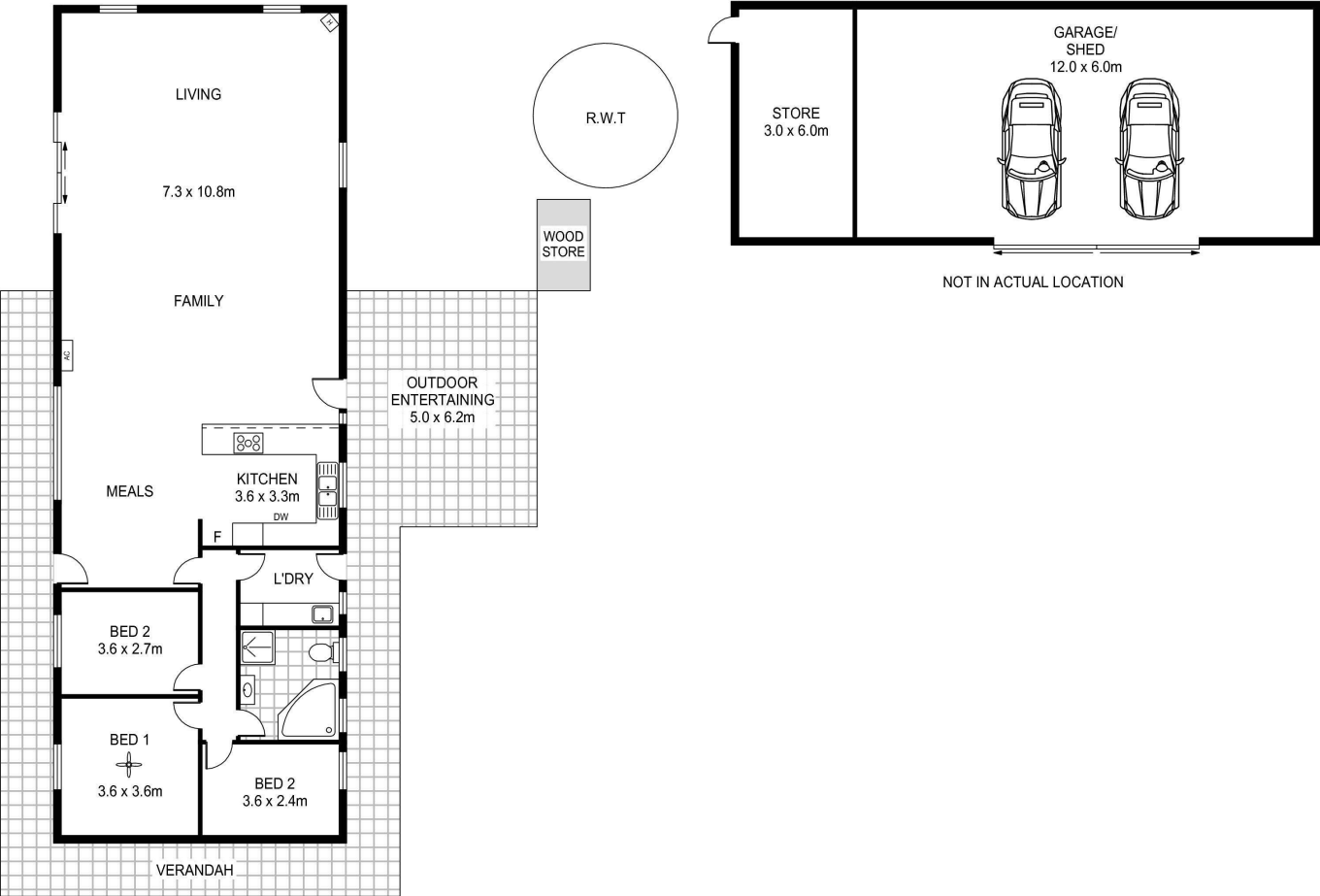












Scale in metres. Indicative only. Dimensions are approximate. All information contained herein is gathered from sources we believe to be reliable. However we cannot guarantee its accuracy and interested persons should rely on their own enquiries

INT : 158m<sup>2</sup>  
GARAGE : 72m<sup>2</sup>

157 Berrymans Road, Gosse