



75 Woodward Heights, HAY, WA 6333

Spacious Parkside Home in Sought-After Springdale Estate

Set opposite a quiet park in the beautiful Springdale Estate, 75 Woodward Heights is the kind of home that makes you slow down the moment you arrive. Built in 2011 and set on a generous 3,075m², it's a rare mix of comfort, practicality and that "we could stay here forever" feeling. With space for the toys, the tools, the kids, the pets, and the veggie garden you keep promising you'll start.

Inside, the layout is made for real life. Recently refreshed with new carpets and paint throughout, a light-filled open-plan kitchen, dining and living zone creates the heart of the home, while the separate theatre room gives you the option to shut the door on movie nights (or quiet nights) when you need it. The king-sized master suite is its own retreat with walk-in robe and ensuite, and the remaining three queen bedrooms all include built-in robes, ideal for families, guests, or a dedicated home office setup.

Outside is where this property really shines. Large front and rear decks let you chase the sun or shelter from the weather year-round. The front deck looks straight across to the park, a peaceful outlook that feels like borrowed space, while the backyard is your own mini lifestyle playground: chook pen, raised veggie beds, a large, enclosed orchard, and a big, grassed area ready for kids and dogs living their best life. The gently sloping landscape adds character and a beautiful sense of separation from neighboring properties, creating a private lifestyle setting feel rarely found this close to

The particulars contained herein are supplied for information only and shall not be taken as a representation in any respect on the part of the vendor or its agent. Interested parties should contact the nominated person or office for full and current details.

TYPE: For Sale

INTERNET ID: 300P190437

SALE DETAILS

Low \$1 Millions

CONTACT DETAILS

Albany Real Estate
189 Chester Pass Road
ALBANY, WA
08 9842 7900

Chloe Glass
0437 308 533

town.

And for anyone who needs real storage or workspace, the property boasts a 6x9m steel frame shed with two car bays and workshop space, perfect for tradies, hobbyists, or boat/caravan storage.

All of this sits in a truly special pocket of the Great Southern, a base that puts world-class coastline and forest experiences within easy reach. For weekend adventures, you're close to William Bay National Park, home to Greens Pool and Elephant Rocks (around 14-15km west of Denmark). And if towering forests are more your style, the Valley of the Giants Tree Top Walk is about 49km from Denmark.

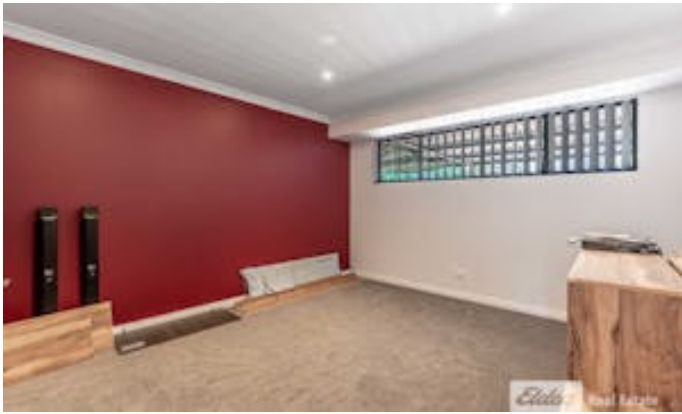
Offered in the Low \$1M's, this is a lifestyle property with real substance, not just land size, but a home that's ready to live in and love from day one.

For your private inspection or more information please contact Chloe Glass on 0437 308 533.

- Land Area 3,075.00 square metres
- Bedrooms: 4
- Bathrooms: 2
- Car Parks: 4











This floor plan including furniture, fixture measurements and dimensions are approximate and for illustrative purposes only. BoxBrownie.com gives no guarantee, warranty or representation as to the accuracy and layout. All enquiries must be directed to the agent, vendor or party representing this floor plan.

75 Woodward Heights, Hay