



48 Lottah Road, NATONE, TAS 7321

Rural Lifestyle with Space to Spare – 48 Lottah Road, Natone

Discover the freedom of country living on this expansive 6.6-hectare (approx) 16.5 Acres property at 48 Lottah Road, Natone. Perfect for families, hobby farmers, or anyone craving space and privacy, this property offers versatility, comfort, and plenty of room to roam.

The main house features three very good sized bedrooms all with built ins and a central bathroom, providing a comfortable and functional living space. A separate studio comes complete with its own bathroom, ideal for guests, extended family, or as a home office or creative space.

For those who need storage, work areas, or room for vehicles and machinery, multiple sheds, 5 garages cater perfectly to practical rural needs. Outdoors, the property boasts expansive yard space, stockyards and paddocks that are very well fenced with excellent fertilized pasture, with two excellent spring-fed dam situated in the heart of the property, offering a reliable water source and enhancing the rural lifestyle.

With approx 6.6 hectares to explore, 48 Lottah Road combines lifestyle, flexibility, and the peace of rural living in one remarkable package - a true country retreat waiting for its next chapter.

The particulars contained herein are supplied for information only and shall not be taken as a representation in any respect on the part of the vendor or its agent. Interested parties should contact the nominated person or office for full and current details.

TYPE: For Sale

INTERNET ID: 300P190445

SALE DETAILS

Offers Over \$795,000

CONTACT DETAILS

Elders Real Estate Burnie

72-74 Wilson Street

Burnie, TAS

03 6432 2311

Bruce Jubb

0417987828

DISCLAIMER: While Elders Real Estate Burnie has taken every care to verify the accuracy of the details in this advertisement, we cannot guarantee its correctness. Prospective buyers or tenants need to take such action as is necessary, to satisfy themselves of any pertinent matters

- Land Area 6.69 hectares
- Building Area: 120.00 square metres
- Bedrooms: 3
- Bathrooms: 2
- Double garage

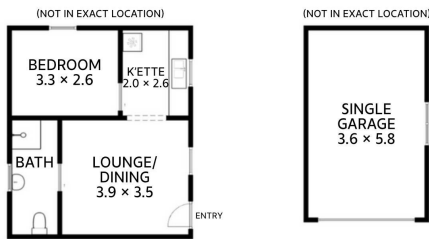




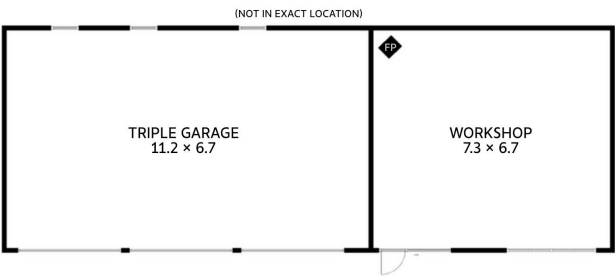
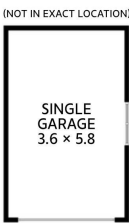




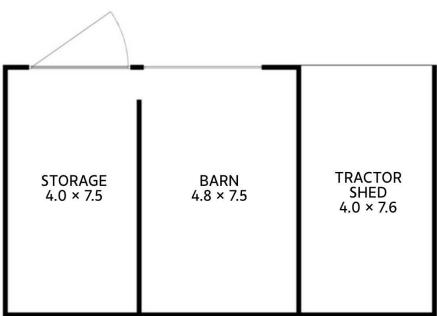
48 Lottah Road
Natone



Granny Flat
Approx. Floor Area 35 sq m



Main House
Approx. Floor Area 159 sq m



All measurements are internal and approximate.
This plan is a sketch for illustration, not valuation.

