



27 Esplanade , ELLISTON, SA 5670

Two Story Magical Waterfront Viewing

Can you believe your luck? This captivating two-story weatherboard home sits right on the waterfront, overlooking the ever-changing beauty of Elliston's stunning Waterloo Bay. A truly rare opportunity, this premium property offers front-row ocean views that transform daily - no two days are ever the same - and is sure to be the envy of all who pass by.

Rebuilt following the 2000 tornado, the home is solid, well maintained and thoughtfully designed to offer dual living potential, ideal for holiday letting, extended family or additional income. Recently resealed aluminum front windows ensure long-term durability and peace of mind.

Ground Level

Accessed from the single carport, the lower level features an open-plan living and dining area with carpet, complemented by vinyl flooring through the kitchen and walkway. The kitchen includes built-in cupboards along two walls, sink, bench gas cooktop and fridge. A comfortable bedroom with built-in robe sits off the living area, while a tiled rear porch provides external access, plus to the toilet and bathroom, complete with corner shower, glass screen, wash trough and mirrored wall cabinet.

Upper Level

TYPE: For Sale

INTERNET ID: 300P190509

SALE DETAILS

\$630,000

CONTACT DETAILS

WUDINNA

44 Eyre Highway

WUDINNA, SA

08 8680 3300

RLA: 62833

Elaine Seal

0428 400 210

Timber stairs lead to a 1.2m-wide balcony where breathtaking ocean views stretch before you. Through a glass sliding door, the expansive open-plan living area runs the full length of the home, with three front-facing windows perfectly framing the rugged coastline. A reverse-cycle wall air conditioner provides year-round comfort.

The central U-shaped kitchen is fully equipped with electric oven, grill, cooktop, microwave, generous storage and includes all existing cutlery, crockery, appliances and cooking equipment. At the rear are three bedrooms, all with built-in wardrobes, and a well-appointed bathroom featuring a newly installed corner glass shower, toilet, vanity and wall mirror.

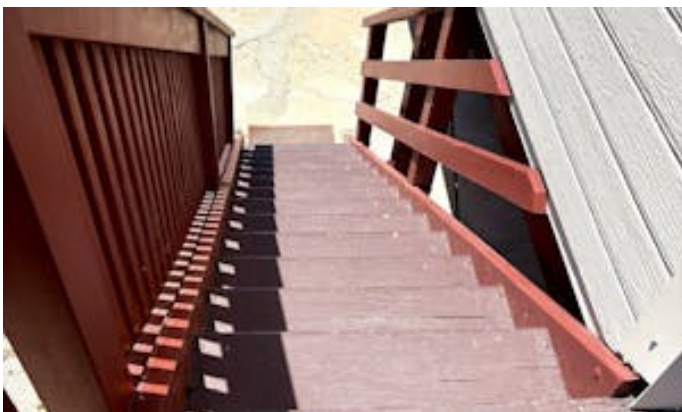
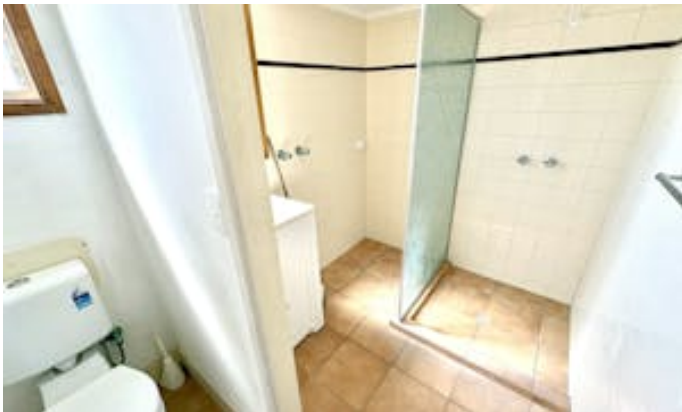
This is a true walk-in, walk-out opportunity - simply bring your clothes, food and washing machine and start enjoying the waterfront lifestyle immediately. Homes of this calibre, location and flexibility are rarely offered in Elliston, making this an exceptional chance to secure your own piece of coastal paradise. A video tour is available online.

Disclaimer: We have in preparing this information used our best endeavours to ensure that the information contained herein is true and accurate but accept no responsibility and disclaim all liability in respect of any errors, omissions, inaccuracies, or misstatements that may occur. Prospective purchasers should make their own enquiries to verify the information contained herein. Elders Real Estate RLA62833

Other features: Beach Front, Carpeted, Kitchenette, Ocean Views, Window Treatments

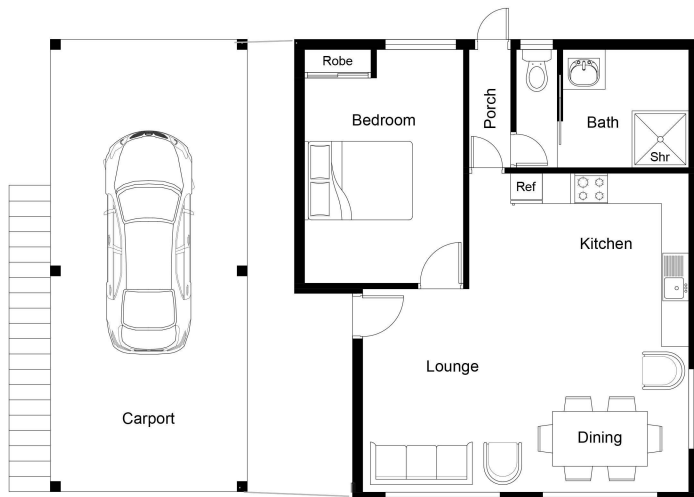
- Land Area 493.00 square metres
- Bedrooms: 4
- Bathrooms: 2
- Car Parks: 2
- Single carport











GROUND FLOOR



UPPER LEVEL

This floor plan including furniture, fixture measurements and dimensions are approximate and for illustrative purposes only.
BoxBrownie.com gives no guarantee, warranty or representation as to the accuracy and layout.
All enquiries must be directed to the agent, vendor or party representing this floor plan.

27 Esplanade, Elliston "Wedgewood Cabin"