

TERIP TERIP VIC 3719

Terip Terip - 320 aces (129.4ha)

129.50 hectares, 319.99 acres

Set within a tightly held district and offered to the market for the first time in 33 years, this

exceptional country estate presents a rare opportunity to secure a highly productive rural

holding combined with an elegant family residence and breathtaking established gardens.

The property spans approximately 320 acres, offering a superb balance of improved grazing

pasture and native woodland, highlighted by stands of mature eucalypts that provide shelter,

beauty, and environmental value.

At the heart of the estate sits a beautifully established four-bedroom homestead, privately

TYPE: For Sale

INTERNET ID: 300P190694

CONTACT DETAILS

Alexandra
Shop 1, 6 Webster Street
Alexandra, VIC
03 5772 1052

John Tossol
0419 558 032

positioned and framed by lush gardens and a striking ornamental lake. The master suite

features a generous en suite, while the remaining bedrooms are serviced by a stylishly

renovated central bathroom. A light filled formal living and dining area forms the centrepiece

of the home, with north-facing floor-to-ceiling windows and doors opening seamlessly onto a

paved veranda and terraced garden surrounds. A modern country kitchen with quality

appliances adjoin a casual dining space, complemented by a separate library or home office.

Practical infrastructure is well catered for with a double garage, powered workshop, steel

cattle yards, and a 15m x 6m machinery shed with concrete floor and power, plus an

adjoining 9m x 6m powered shed with gravel base.

Water security is a standout feature. The property is serviced by an automated bore supplying crystal clear drinking water to the house, cattle troughs and garden areas, three dams including a 15-megalitre ornamental lake, a spring-fed creek, and two 37,000-litre concrete tanks for domestic use. Grid electricity is supported by a 4.5kW solar system with battery storage, along with a 12kVA diesel backup generator providing a "no break" power supply.

The gardens are truly exceptional, reflecting decades of dedication and care. Ornamental

specimen trees include Lombardy poplars, claret ash, English oak, golden elm, weeping

willow, and plum trees, creating a tranquil and visually stunning setting rarely found.

A property of scale, beauty, and reliability-this is a remarkable rural lifestyle offering in a tightly held location.

The current owners have an inner Melbourne home and journey time is just under two hours.

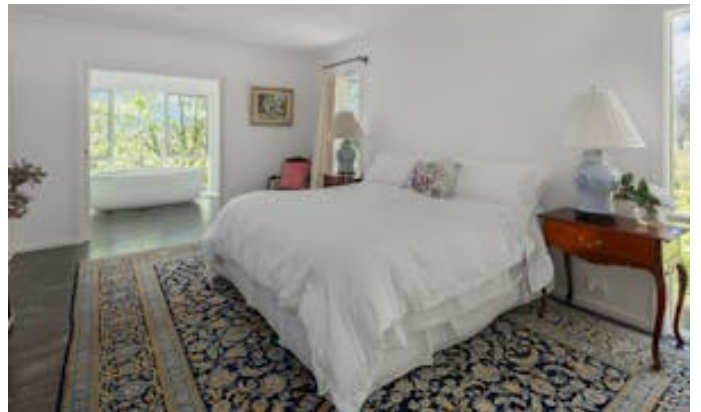
Expressions of Interest closing Friday 13th of February 2026 @ 4.00pm.

- Land Area 129.499405 hectares
- Bedrooms: 4
- Bathrooms: 2

HOMESTEAD

Bedrooms	4
Bathrooms	2











EVERY CARE HAS BEEN TAKEN TO VERIFY THE ACCURACY OF THE INFORMATION CONTAINED HEREIN BUT NO WARRANTY IS GIVEN AND PERSPECTIVE BUYERS ARE ADVISED TO MAKE THEIR OWN INVESTIGATIONS. ALL AREAS, SIZES AND DIMENSIONS SHOWN ARE APPROXIMATE ONLY.

