



32 Paxton Terrace, BURRA, SA 5417

Enchanting Renovated Cottage Retreat

Tucked away in a truly breathtaking setting, this impeccably renovated two-bedroom, two-bathroom cottage is a standout sanctuary where timeless charm meets contemporary luxury. Every detail has been carefully considered, preserving the home's original character while introducing brand-new electrical and plumbing systems for effortless modern living. Stylish furnishings, curated finishes, and abundant natural light combine to create interiors that feel both sophisticated and wonderfully welcoming.

Positioned on an expansive 1,011m² block, the property delivers a rare sense of space and privacy. Enhancing its appeal is a beautifully renovated, fully self-contained studio—an exceptional bonus that opens the door to guest accommodation or a secluded home office, creative studio, or private retreat. This versatile addition elevates both lifestyle enjoyment and long-term investment value.

Step outside and discover a low-maintenance garden designed for relaxation and connection with nature. A charming fire pit anchors the outdoor space, inviting memorable evenings under a canopy of stars. From sunrise to sunset, sweeping, uninterrupted views surround the property, offering a stunning backdrop from every vantage point and an ever-present sense of serenity.

TYPE: For Sale

INTERNET ID: 300P190796

SALE DETAILS

\$495,000

CONTACT DETAILS

Elders Real Estate Clare Valley / Burra

230 Main North Road

Clare, SA

08 8842 9300

Brooke Edmonds

0408933100

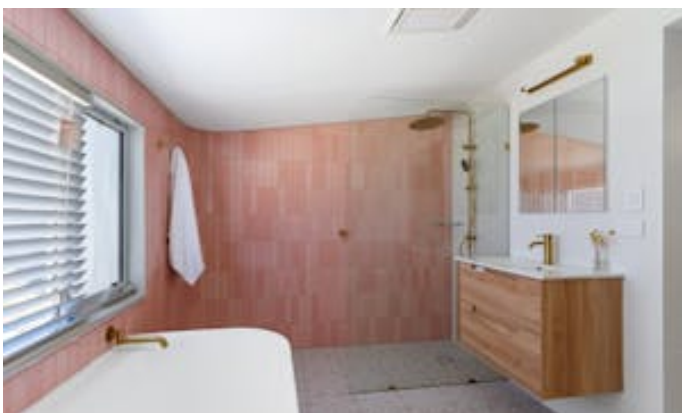
A captivating fusion of heritage elegance and modern comfort, this one-of-a-kind cottage presents an extraordinary opportunity for those seeking a peaceful escape, a refined lifestyle upgrade, or a savvy investment. Immaculately presented and completely move-in ready, this is a home where you can simply arrive, unwind, and start living your dream.

To view this stunning property please call Brooke on 0408933100

Other features: Close to Schools, Close to Shops

- Land Area 1,011.00 square metre
- Bedrooms: 2
- Bathrooms: 2











Living:	68.02sqm
Verandah:	44.96sqm
Deck:	10.15sqm
Total:	123.13sqm

This drawing is for illustration purposes only.
All measurements are internal and approximate.
Details intended to be relied upon should be
independently verified.
Produced by Open2view.com