



1175 Schmaals Road, MANNUM, SA 5238

Sheds, a Home, and a Hectare to Call Your Own

Down a country road where time seems to slow and the air feels a little cleaner, this charming rural retreat invites you to imagine a different rhythm of life.

Set on approximately 1 hectare, this lifestyle allotment offers space, simplicity and possibility. The home itself is warm and welcoming. It does need some attention and features three comfortable bedrooms all with ceiling fans, a central lounge that encourages slow mornings and cosy evenings with split system air-conditioner and slow combustion heater, and a practical country kitchen where meals are made without hurry.

The renovated bathroom adds a fresh modern touch, thoughtfully complemented by a separate toilet-a small luxury that makes everyday living easy. Step outside and the story expands: multiple sheds provide room for tools, projects, hobbies or dreams yet to be defined. Whether you're restoring, creating, storing or tinkering, there's space to do it all. Rainwater tanks are also included and plumbed to the house.

This is a property for those who crave open skies, quiet nights and room to breathe. Picture weekends spent tending a garden, evenings watching the sun dip low over your own land, and mornings filled with birdsong rather than traffic. It's a place where life

The particulars contained herein are supplied for information only and shall not be taken as a representation in any respect on the part of the vendor or its agent. Interested parties should contact the nominated person or office for full and current details.

TYPE: For Sale

INTERNET ID: 300P190859

SALE DETAILS

\$450,000.00

CONTACT DETAILS

Murray Bridge

201A Adelaide Road

Murray Bridge, SA

08 8531 9200

RLA: 62833

Ali Bolt

0437 290 698

feels grounded-ideal for tree changers, downsizers, creatives or anyone seeking a peaceful rural setting without complication.

1175 Schmaals Road, Mannum is a lifestyle property with a story, waiting for its next chapter to be written by you.

For more information or for a FREE market appraisal of your property, please contact Ali Bolt on 0437 290 698.

CT - Volume 5246 Folio 272

Council - Mid Murray Council

Council Rates - TBA

Zoning - Rural - RU

Disclaimer:

We have in preparing this information used our best endeavours to ensure that the information contained herein is true and accurate but accept no responsibility and disclaim all liability in respect of any errors, omissions, inaccuracies, or misstatements that may occur. Prospective purchasers should make their own enquiries to verify the information contained herein. Elders Real Estate RLA62833

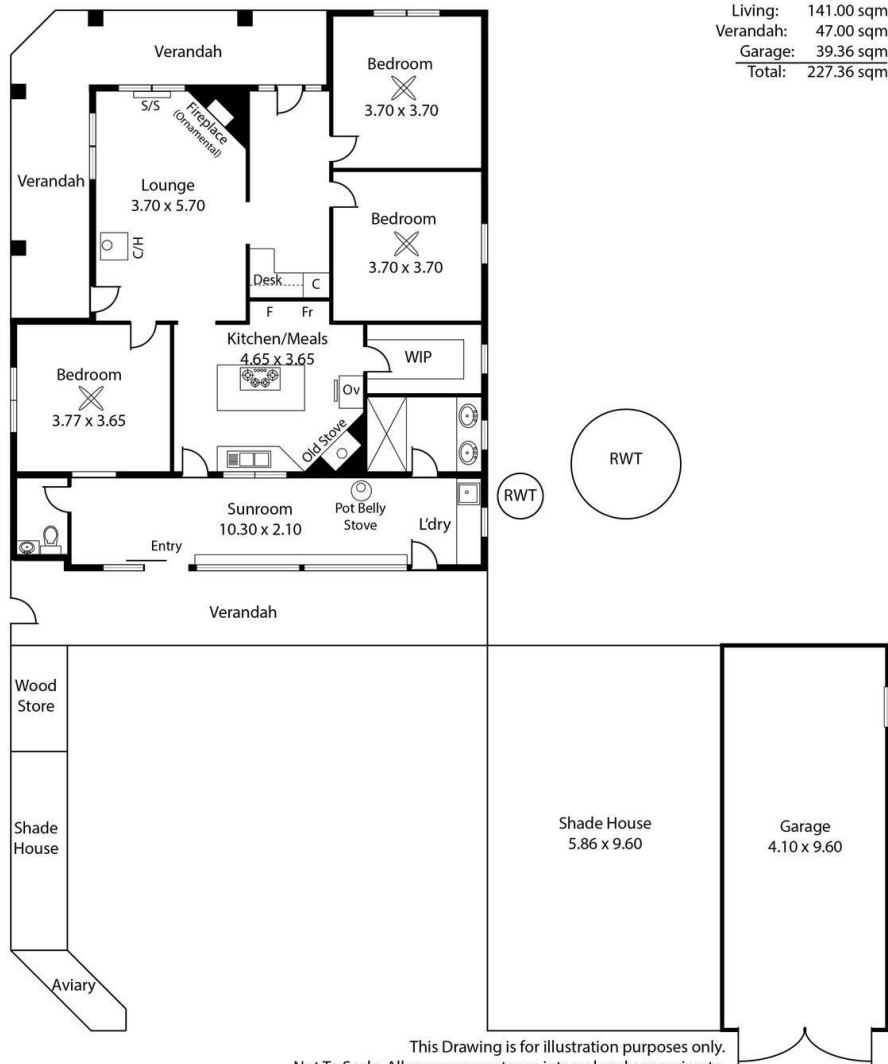
- Land Area 1 hectare
- Bedrooms: 3
- Bathrooms: 1
- Car Parks: 8







1175 Schmaals Road,
MANNUM



This Drawing is for illustration purposes only.
Not To Scale. All measurements are internal and approximate.
Details intended to be relied upon should be independently verified.
Produced by Open2view.com

