



11 Murrayville Road, PINNAROO, SA 5304

Time Stands Still

Solidly constructed in 1960 with a steel frame, straw-insulated walls, and ceiling batts, the home was ahead of its time. Sitting on approximately 1,500m² and cleverly designed for natural airflow and a sunny northern aspect, it stays cool in summer and warm in winter.

Inside, time has stood still with everything as it was. Generous living spaces include original kitchen, dining room/living, formal lounge, four bedrooms (2 with BIR), sewing room/study and a sunroom wrapping around the rear corner of the property. Practical touches-like a second shower off the laundry for the workman, abundant storage, split system air-conditioning and ducted evaporative air conditioning - this reflects its thoughtful design.

Outside, the property continues to impress with dual access, a drive-through double carport, and a 9m x 6m powered triple garage ideal for a caravan, boat, or workshop. 3kw Solar power, multiple rain water tanks, beautiful patio area, verandah and a low-maintenance, climate-smart garden complete the picture.

A solid, character-filled home with a story to tell-ready for its next chapter.

TYPE: For Sale

INTERNET ID: 300P190868

SALE DETAILS

\$325,000.00

CONTACT DETAILS

Murray Bridge

201A Adelaide Road

Murray Bridge, SA

08 8531 9200

RLA: 62833

Ali Bolt

0437 290 698

For more information or for a FREE market appraisal of your property, please contact Ali Bolt on 0437 290 698.

CT - Volume 5568 Folio 789

Council - Southern Mallee

Council Rates - \$1,970.30 per annum

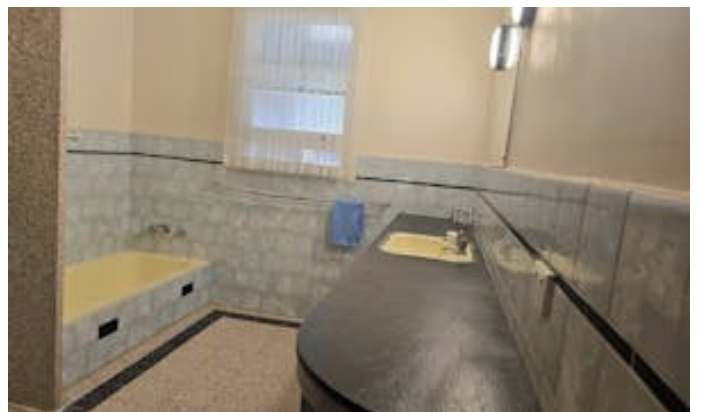
Zoning â## Neighbourhood

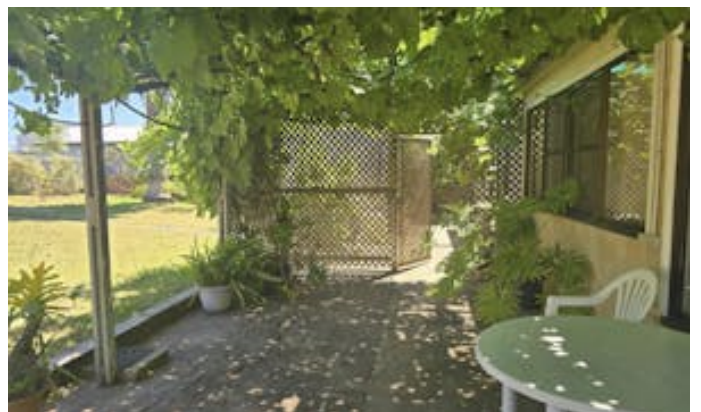
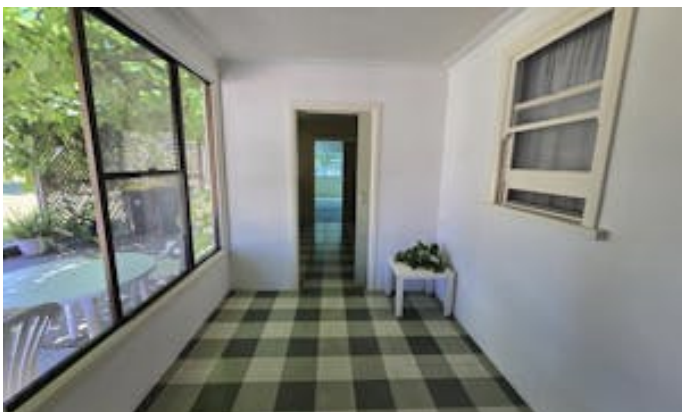
Disclaimer:

We have in preparing this information used our best endeavours to ensure that the information contained herein is true and accurate but accept no responsibility and disclaim all liability in respect of any errors, omissions, inaccuracies, or misstatements that may occur. Prospective purchasers should make their own enquiries to verify the information contained herein. Elders Real Estate RLA62833

Other features: Carpeted

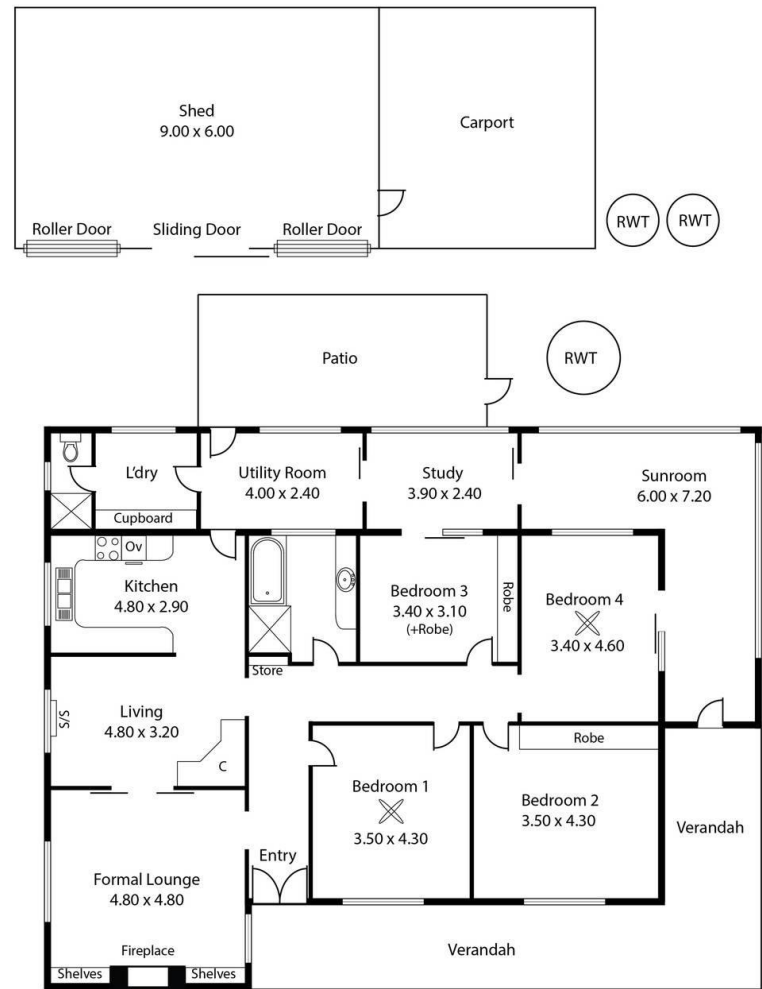
- Bedrooms: 4
- Bathrooms: 1
- Car Parks: 5







11 Murrayville Road
PINNAROO



Living:	210.00 sqm
Verandah:	38.50 sqm
Shed:	54.00 sqm
Total:	302.50 sqm

This Drawing is for illustration purposes only.
Not To Scale. All measurements are internal and approximate.
Details intended to be relied upon should be independently verified.
Produced by Open2view.com