

843 Riverway Drive, CONDON, QLD 4815

Loved, Lived In & Ready for Its Next Chapter

This solid, classic high-set home is full of charm and character. Original in style, it feels welcoming and timeless, ready for its next chapter.

Timber floors, a practical layout, and three generous bedrooms create a bright, comfortable home where life can unfold with ease - Enjoy lazy mornings in the sunlit lounge.

Step outside to established gardens and lush green lawns, kept vibrant with a bore, and imagine weekend barbecues or relaxing in the peaceful garden.

Parking underneath adds convenience, while there's plenty of room to grow, renovate, or simply enjoy as it is.

Conveniently located close to the Ring Road and not far from Willows Shopping Centre, commuting, shopping, and travel are all easy - making this home as practical as it is charming.

TYPE: For Sale

INTERNET ID: 300P190986

SALE DETAILS

Offers over \$485,000

CONTACT DETAILS

Brenda Thompson
0447 072 899

Features at a glance:

- 3 Spacious Bedrooms
- Timber Floors Throughout
- Modular Kitchen
- Bore Water to Gardens
- Secure Parking Under the House
- Low Rates Approx \$3420 per Year
- Close to Ring Road & Willows Shopping Centre

. Current rent without air-conditioning \$400pw - Potential Rent with \$475 - \$500 per week

- Building and pest report available

Perfect for first home buyers or investors, this property blends heart, character, and future potential - a home ready to be loved for years to come.

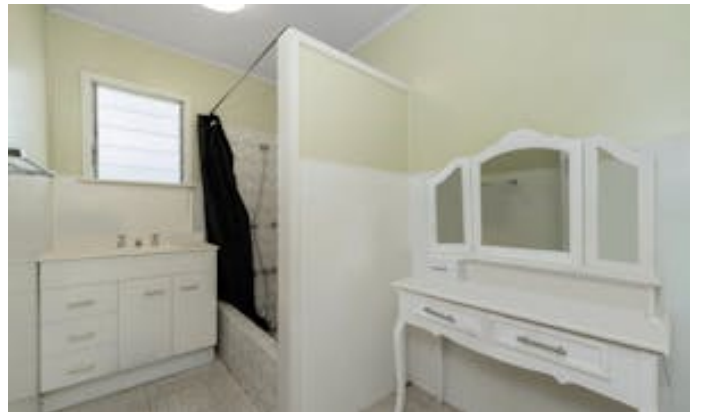
**** COMING SOON!!!! POTENTIAL DEVELOPMENT OPPORTUNITY! (STCA)**

The adjoining property. Covering 4753m2 could be a great development opportunity or perfect for families wanting to live close to each other **

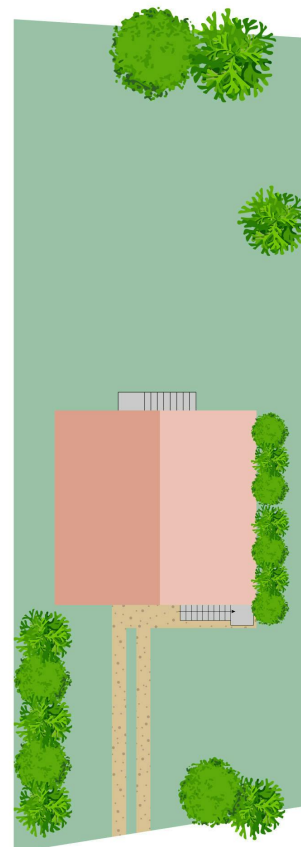
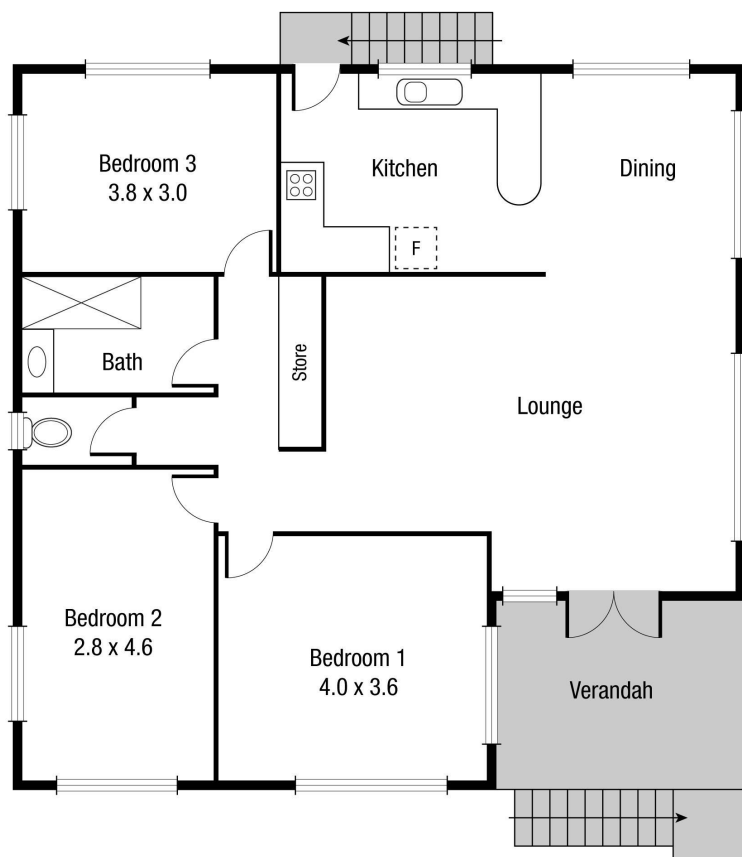
(* See drone shot)

Other features: Close to Schools, Close to Shops, Close to Transport

- Land Area 934.00 square metres
- Bedrooms: 3
- Bathrooms: 1
- Car Parks: 2
- Floorboards







Scale in metres. Indicative only. Dimensions are approximate. All information contained herein is gathered from sources we believe to be reliable. However we cannot guarantee its accuracy and interested persons should rely on their own enquiries.

TOTAL AREA : 113.1 sq.m

843 Riverway Dr, Condon