



8 Laurence Street, EUDUNDA, SA 5374

Size Will Surprise in the Heart of Eudunda

Set on a generous 1,010m² allotment in the heart of the increasingly popular township of Eudunda, this solid 1963 brick home is a classic. Offering a comfortable 104sqm of internal living, the home provides plenty of space and scope to personalise, extend, or simply enjoy as is.

Inside, you'll find two well proportioned bedrooms, with the master featuring timber floorboards, a manual roller shutter and a freestanding wardrobe included in the sale. The large living area also boasts timber floorboards and is complemented by a newly installed reverse-cycle split system, ensuring year-round comfort. The U-shaped kitchen is practical and spacious, featuring electric cooking and ample storage with floor-to-ceiling pantry options.

Outside, the property continues to impress with a double garage offering secure parking for two vehicles, plus additional open parking for two more cars, ideal for families, tradies or visitors. All this is just a short walk to Eudunda's main street, where you'll find everyday essentials including a supermarket, bakery, chemist, doctors' surgery and newsagent.

Whether you're a first-home buyer looking to enter the market or an investor seeking a

The particulars contained herein are supplied for information only and shall not be taken as a representation in any respect on the part of the vendor or its agent. Interested parties should contact the nominated person or office for full and current details.

TYPE: For Sale

INTERNET ID: 300P191050

SALE DETAILS

\$349,000 - \$369,000

CONTACT DETAILS

Barossa

127 Murray Street
Tanunda, SA
(08) 8562 2883
RLA: 62833

Teri Wenske

0409 687 465

solid opportunity in a growing regional town, this property is well worth your inspection.

Property Information

Council: Goyder Council

Council Rates: \$2,065.05 per annum

Zoning: N Neighbourhood

Local Government Description: Residential

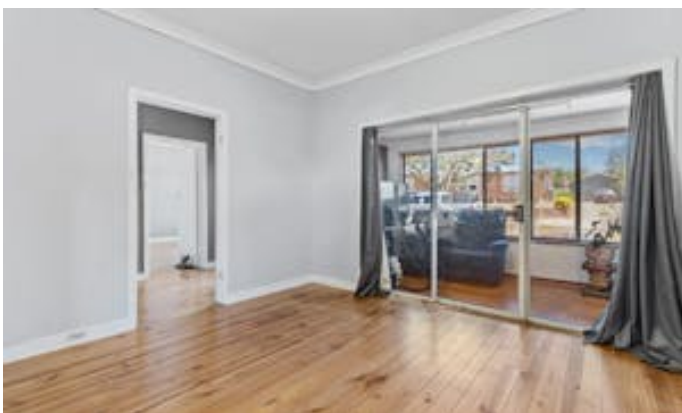
Land Size: 1010m2 approx.

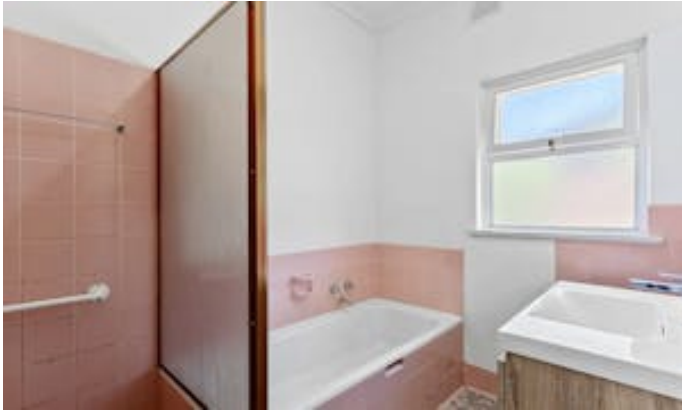
Year Built: 1963

Disclaimer:

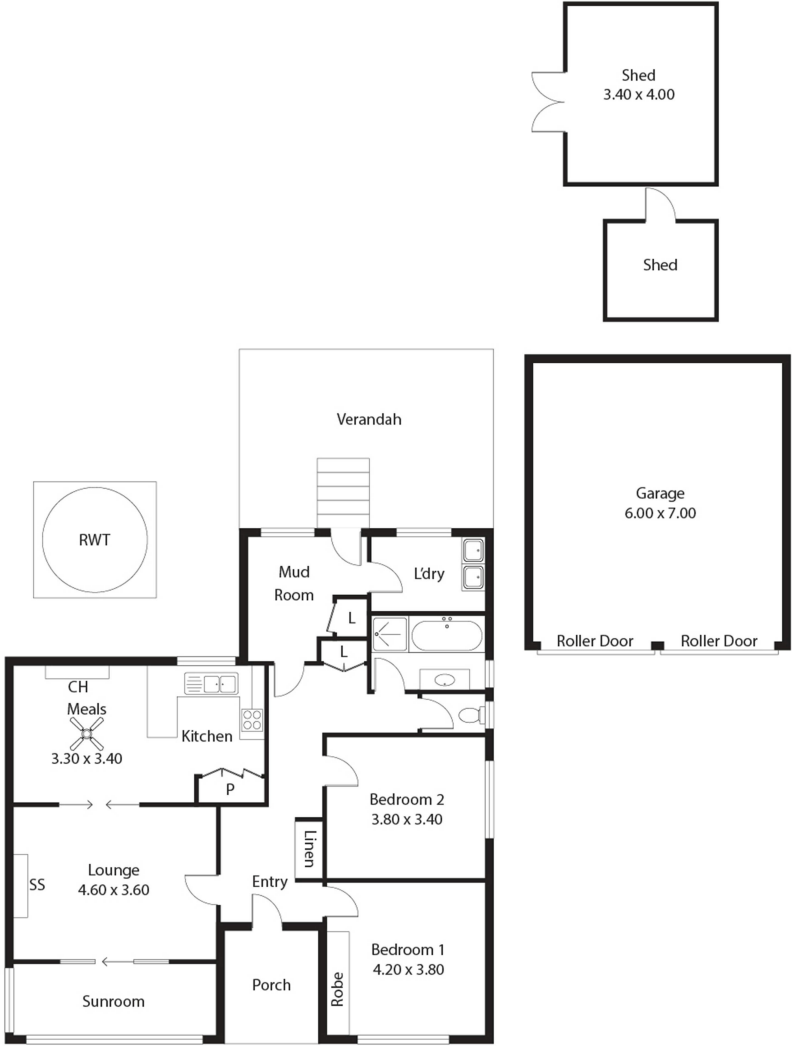
We have in preparing this information used our best endeavours to ensure that the information contained herein is true and accurate but accept no responsibility and disclaim all liability in respect of any errors, omissions, inaccuracies, or misstatements that may occur. Prospective purchasers should make their own enquiries to verify the information contained herein. Elders Real Estate RLA62833

- Land Area 1,010.00 square metre
- Building Area: 104.00 square metres
- Bedrooms: 2
- Bathrooms: 1
- Double garage





8 Laurence Street,
EUDUNDA



Living:	111.50SQ.M
Porch:	5.90SQ.M
Verandah:	25.10SQ.M
Garage:	41.50SQ.M
Shed:	20.10SQ.M
TOTAL:	204.10SQ.M

This Drawing is for illustration purposes only. All measurements are internal and approximate. Details intended to be relied upon should be independently verified.