



700 Mooreville Road, MOOREVILLE, TAS 7321

Charming Sandstone Home with Established Gardens

Set on approximately 2.27 hectares (5.6 Acres) this outstanding property at 700 Mooreville Road offers a rare combination of space, comfort, and versatility. The 4-bedroom, 2-bathroom home is perfect for families, entertainers, or anyone seeking a semi-rural lifestyle. Three of the bedrooms feature built-in wardrobes, ensuring plenty of storage for everyone.

Constructed from solid sandstone brick, the home is warm and inviting, with ducted heating and reverse cycle air conditioning keeping every room comfortable year-round. With three separate living spaces, there's plenty of room to relax, host guests, or carve out a home office or hobby area.

Step outside to discover established, beautifully maintained gardens that add charm and serenity to the property, while a large barn/storage shed offers versatile space for vehicles, tools, or recreational projects. A double garage with internal access provides convenience and security.

Whether you're looking for a home with room for the whole family, space for hobbies including plenty of room for your favourite livestock/pets or simply a peaceful semi-rural lifestyle within easy reach of local amenities, 700 Mooreville Road delivers a perfect

The particulars contained herein are supplied for information only and shall not be taken as a representation in any respect on the part of the vendor or its agent. Interested parties should contact the nominated person or office for full and current details.

TYPE: For Sale

INTERNET ID: 300P191117

SALE DETAILS

\$870,000

CONTACT DETAILS

Elders Real Estate Burnie

72-74 Wilson Street
Burnie, TAS
03 6432 2311

Bruce Jubb
0417987828

blend of practicality and character.

DISCLAIMER: While Elders Real Estate Burnie has taken every care to verify the accuracy of the details in this advertisement, we cannot guarantee its correctness. Prospective buyers or tenants need to take such action as is necessary, to satisfy themselves of any pertinent matters

- Land Area 2.273 hectares
- Building Area: 216.00 square metres
- Bedrooms: 4
- Bathrooms: 2
- Double garage

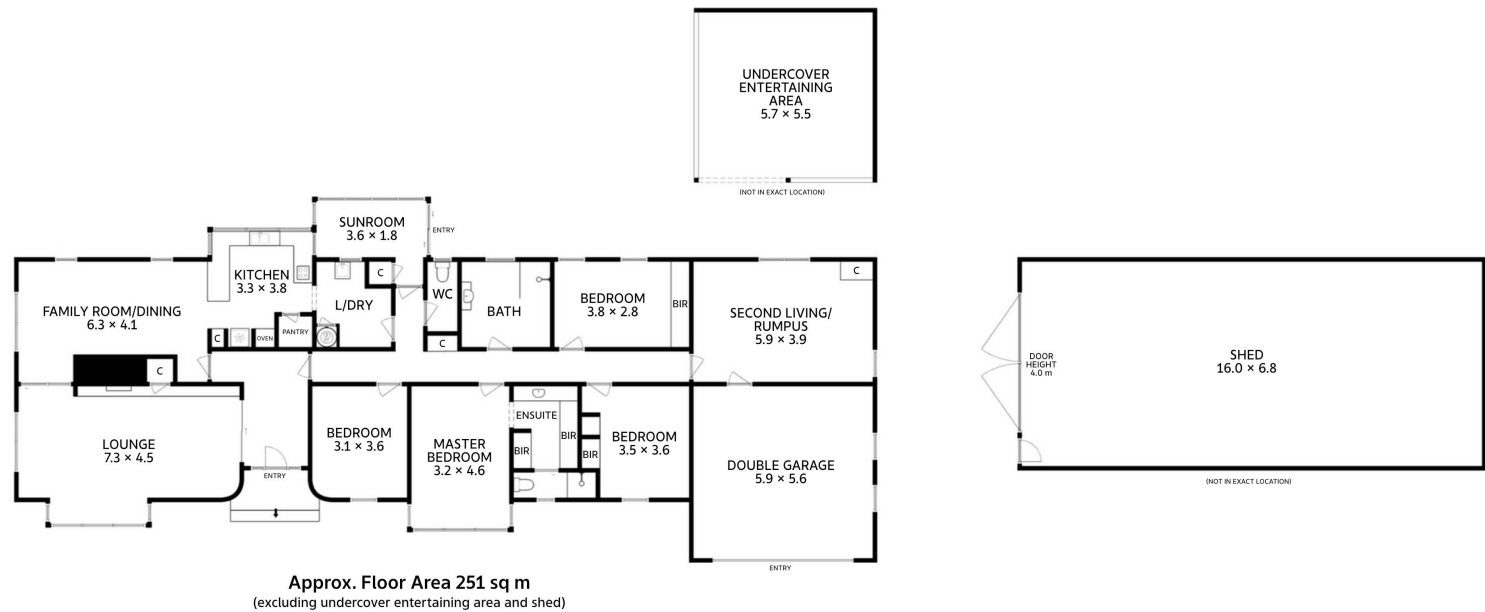








700 Mooreville Road
Mooreville



All measurements are internal and approximate.
This plan is a sketch for illustration, not valuation.

