

9 Francis Street, WAIKERIE, SA 5330

SHOWROOM, WORKSHOP & MULTIPLE TITLES IN RIVERLAND

ELDERS COMMERCIAL

McKays Auto

Well- presented and affordable commercial investment property with additional land holdings

in the heart of rapidly developing Waikerie

With key features you'll love including:

- : Three (3) titles with showroom exposure in growing township
- : An ideal offering for commercial investors, land bankers or Riverland business operators
- : Immaculately presented showroom with high clearance

The particulars contained herein are supplied for information only and shall not be taken as a representation in any respect on the part of the vendor or its agent. Interested parties should contact the nominated person or office for full and current details.

TYPE: For Sale

INTERNET ID: 300P191208

SALE DETAILS

EOI Closing 6th March 2026

CONTACT DETAILS

Head Office

80 Grenfell Street

ADELAIDE, SA

08 8425 4000

RLA: 62833

Adam Chilcott

0447 710 484

drive through workshop

: Outstanding expansion potential or change of use (stpc) given multiple titles

: Current zoning Township Main street

: An easily accessible location being approximately 2 hours to Adelaide

Land Details

1. CT Vol 5441 / Folio 209 Allotment 123

2. CT Vol 5436 / Folio 39 Allotment 53

3. CT Vol 5786 / Folio 709 Allotment 122

Available in one line or separately

Best Offers by 6th March 2026

Adam Chilcott

0447710484

Adam.chilcott@elders.com.au

Marc Worsfold

0419 030 892

Marc.worsfold@elders.com.au

Disclaimer: We have in preparing this information used our best endeavours to ensure that the information contained herein is true and accurate but accept no responsibility and disclaim all liability in respect of any errors, omissions, inaccuracies or misstatements that may occur. Prospective purchasers should make their own enquiries to verify the information contained herein.

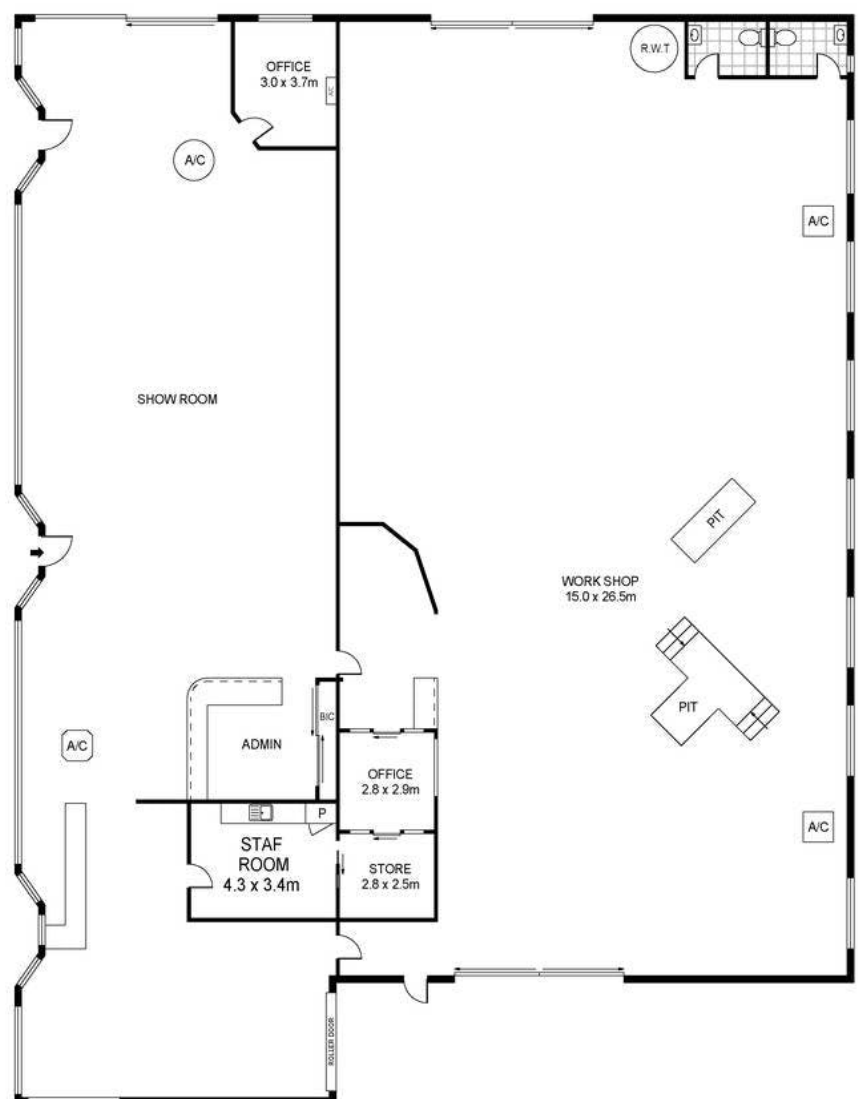
RLA 62833

*Outline of land titles in images area approximate only

- Land Area 2,923.00 square metres
- Commercial Type:
- Building Area: 734.00 square metres







Scale in metres. Indicative only. Dimensions are approximate. All information contained herein is gathered from sources we believe to be reliable. However we cannot guarantee its accuracy and interested persons should rely on their own enquiries.

INT : 715m²

9 Francis Street, Waikerie