



6 Bindarra Road, CLARE, SA 5453

Timeless Charm with Elevated Views on 1.99ha

Set on an expansive 1.99 hectares at the peaceful end of a no-through road, this character-filled property offers a rare opportunity to enjoy space, privacy, and stunning elevated views on the edge of Clare. Built in 1958 for a respected local doctor, the home showcases enduring quality and classic design, complemented by its tranquil surroundings.

Inside, the residence features four well-proportioned bedrooms and two bathrooms, ideal for families or those seeking a relaxed country lifestyle. The home retains its original charm with impressive 10-foot ceilings that enhance the sense of space and natural light throughout. A formal lounge provides an elegant setting for entertaining or quiet evenings, while the separate family room offers a more casual space for everyday living.

The established gardens surrounding the home create a serene outdoor environment, with mature plantings adding beauty, shade, and privacy. Whether enjoying your morning coffee while taking in the elevated outlook or hosting gatherings with family and friends, the setting is both inviting and picturesque.

Positioned on the fringe of Clare, the property offers the perfect balance between convenience and seclusion. You'll enjoy easy access to local amenities, wineries, and

TYPE: For Sale

INTERNET ID: 300P191234

SALE DETAILS

\$850,000 - \$920,000

CONTACT DETAILS

Elders Real Estate Clare Valley / Burra

230 Main North Road
Clare, SA

08 8842 9300

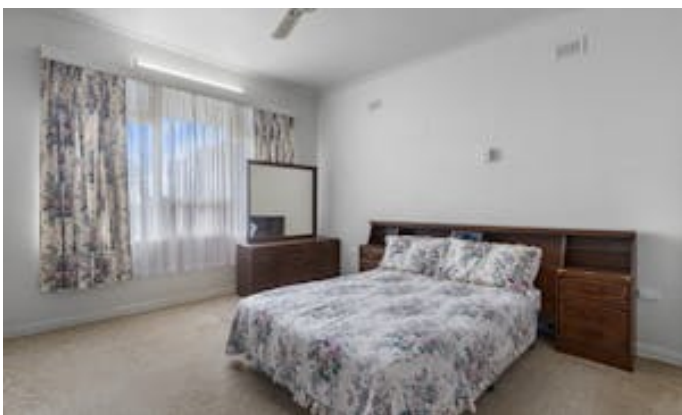
Rob Calaby
0428560301

schools, while still relishing the quiet lifestyle that comes with a rural setting.

With its generous land size, solid construction, and sought-after location, this property presents a unique opportunity to secure a piece of Clare's history while embracing a peaceful, spacious way of life.

- Land Area 1.99 hectares
- Bedrooms: 4
- Bathrooms: 2
- Car Parks: 6
- Single garage











Living:	156.46sqm
Verandah/Carport:	131.76sqm
Shed/Cellar:	83.36sqm
Total:	371.58sqm

This drawing is for illustration purposes only. All measurements are internal and approximate. Details intended to be relied upon should be independently verified.
Produced by Open2view.com

