



38 Ridge Road, MURRAY BRIDGE, SA 5253

Finished in Style – Executive Living in the Fast-Growing Town of Murray Bridge

Welcome to this immaculate, beautifully presented executive home, perfectly positioned in the rapidly growing and highly sought-after town of Murray Bridge. Designed with sophistication, comfort, and entertaining in mind, this stunning residence offers space, style, and functionality for the modern family.

The home features four generous bedrooms, two bathrooms, and multiple living zones, providing flexibility for families of all sizes. The luxurious master suite is positioned at the front of the home, complete with its own private retreat, allowing parents to relax and unwind in complete seclusion away from the rest of the household.

At the heart of the home lies an impressive open-plan kitchen, family, and dining area, ideal for both everyday living and hosting. The large, well-appointed kitchen seamlessly flows through to the extra-large outdoor entertaining area, making this the ultimate party house-perfect for large gatherings, celebrations, or relaxed weekend entertaining.

Every detail has been thoughtfully considered, with the current owners maintaining the home to an exceptional standard. From the stylish finishes to the beautifully landscaped, fully fenced grounds, there is truly nothing to do but move in and enjoy.

TYPE: For Sale

INTERNET ID: 300P191248

SALE DETAILS

\$645,000 - \$700,000

CONTACT DETAILS

,
Sylvia Jemson-Ledger
Hills & Fleurieu
0487 301 390

Property highlights include:

- 4 spacious bedrooms
- 2 modern bathrooms
- Multiple living areas
- Private parents' retreat
- Large kitchen with expansive family/dining space
- Extra-large outdoor entertaining area
- Double garage with roller doors
- Fully fenced, beautifully landscaped yard
- Close to schools, transport, and shopping

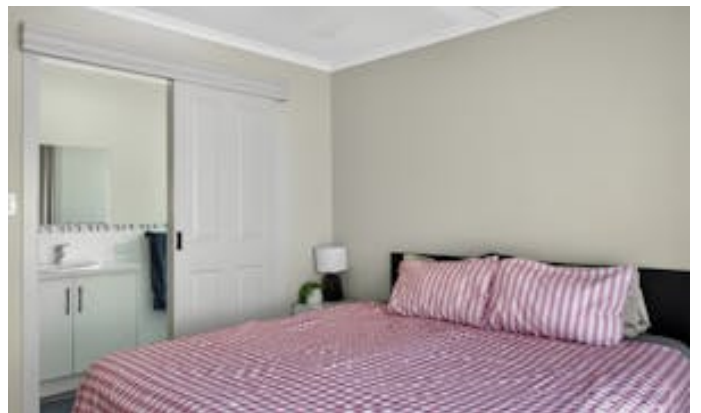
This is a home where attention to detail shines, offering a rare opportunity to secure an executive property in a fast-moving market. Relax, entertain, and enjoy the very best of Murray Bridge living.

Disclaimer: We have in preparing this information used our best endeavours to ensure that the information contained herein is true and accurate but accept no responsibility and disclaim all liability in respect of any errors, omissions, inaccuracies or misstatements that may occur. Prospective purchasers should make their own enquiries to verify the information contained herein. RLA 62833

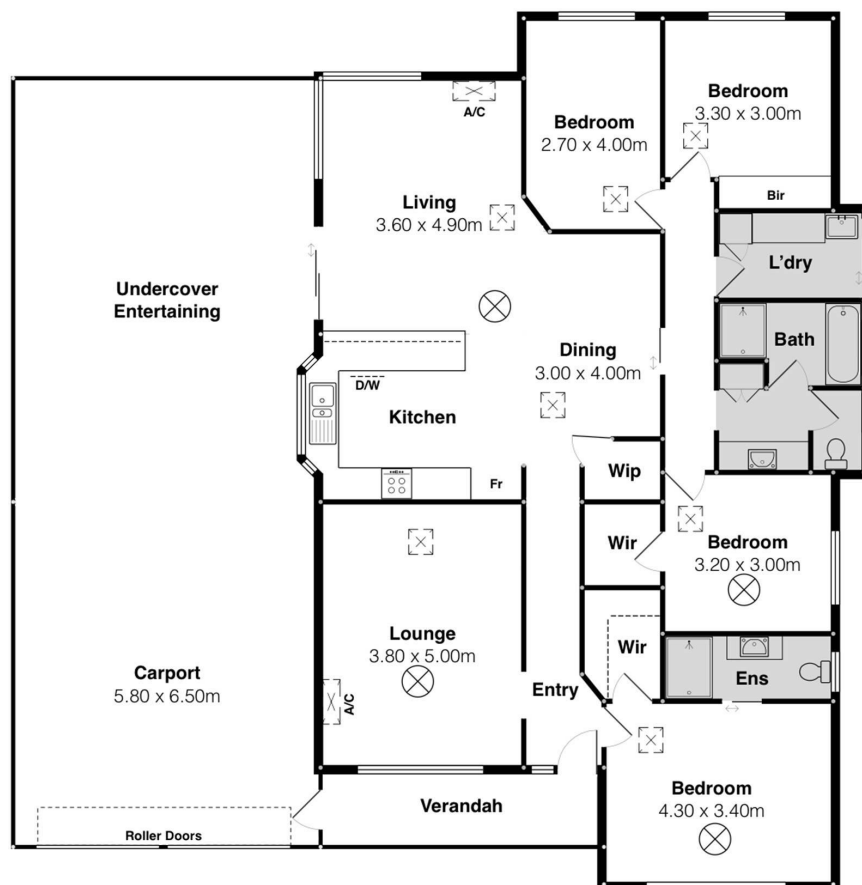
- Bedrooms: 4
- Bathrooms: 2
- Car Parks: 4
- Double garage











38 Ridge Rd, Murray Bridge

Scale in metres. This drawing is for illustration purposes only. All measurements are approximate and details intended to be relied upon should be independently verified.



PRODUCED BY
SOUTH COAST STUDIOS