

9 Village Way, MACS COVE, VIC 3723

The Adventure Base Cottage

If you are looking for a charming two-bedroom cottage that perfectly captures the spirit of a relaxed country and lakeside living, look no further. Tucked away in a peaceful setting, this delightful retreat has been thoughtfully updated while retaining its warmth and character, making it ideal as a permanent home, weekend getaway, or savvy investment.

Step inside to a cosy open plan kitchen and living area, where a crackling wood fire sets the scene for winter nights and relaxed year-round comfort. The cleverly combined bathroom and laundry maximise functionality, while the home flows seamlessly onto an expansive covered deck, creating the ultimate space for morning coffees, long lunches, or evenings spent entertaining under the stars.

Surrounded by mature trees, the property offers privacy and tranquillity with the bonus of low-maintenance living. A powered two-bay shed adds excellent versatility for storage, hobbies, or adventure gear.

Features at a glance:

- Open-plan kitchen and living area with cosy wood fire

The particulars contained herein are supplied for information only and shall not be taken as a representation in any respect on the part of the vendor or its agent. Interested parties should contact the nominated person or office for full and current details.

TYPE: For Sale

INTERNET ID: 300P191488

SALE DETAILS

\$450,000 - \$460,000

CONTACT DETAILS

,

Catherine Pigdon
0419 001 528

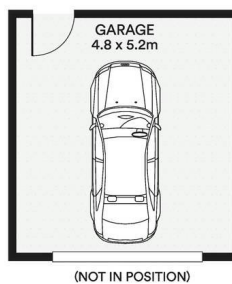
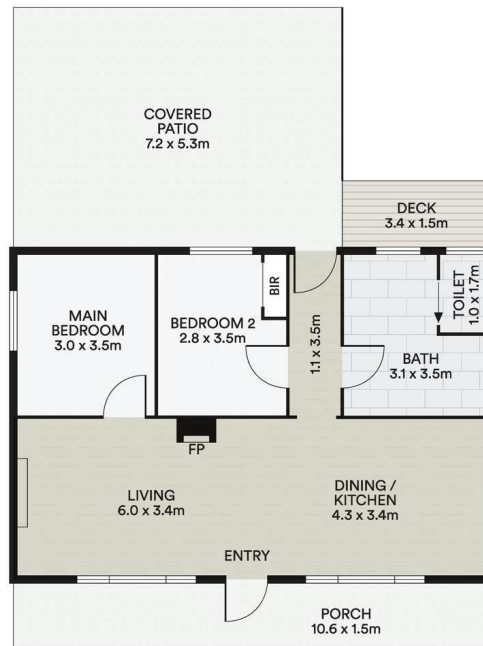
- Generous 38m² covered alfresco deck
- Two-bay shed with power
- Low-maintenance gardens framed by established trees
- Short stroll to Lake Eildon
- Approx. 15 minutes to Mansfield township, caf  s and amenities
- Short drive to the Howqua River, renowned for trout fishing
- Around 30 minutes to Mt Buller Ski Resort
- Excellent Airbnb or long-term rental potential
- Brand-new roof, new septic system, new plumbing to the house and new water tanks

Whether you're searching for a peaceful escape, an adventure base, or a lifestyle change, this charming cottage delivers comfort, location, and opportunity in equal measure.

- Land Area 923.00 square metres
- Bedrooms: 2
- Bathrooms: 1
- Double garage







(NOT IN POSITION)



All information contained in this document is from sources we believe to be accurate, however we cannot guarantee its accuracy. Interested person should make and rely on their own enquiries in relation to measurements, dimensions, layout, furniture and descriptions.