



9 Island View Close, CAPE JERVIS, SA 5204

Modern Coastal Home with Soul

Set within a peaceful pocket of Cape Jervis, this modern home offers a relaxed and spacious lifestyle, surrounded by rolling hills and open outlooks. Thoughtfully designed and filled with natural light, it's a home that feels easy to live in from the moment you arrive.

At the heart of the home, the central kitchen, dining and living zone is bright and welcoming, enhanced by soaring cathedral ceilings and clerestory windows that create a wonderful sense of volume and openness. The clean, uncluttered aesthetic adds to the calm feel, while generous proportions throughout allow everyday life to flow comfortably.

The kitchen is generously proportioned, with plenty of bench space and cabinetry. Modern appliances make cooking a breeze and a social affair, complemented by the home's open-plan design.

The lounge becomes a cosy retreat, with a wood fire for winter evenings and a reverse-cycle split system for year-round comfort.

The main bedroom is privately positioned and enjoys excellent natural light, featuring a

The particulars contained herein are supplied for information only and shall not be taken as a representation in any respect on the part of the vendor or its agent. Interested parties should contact the nominated person or office for full and current details.

TYPE: For Sale

INTERNET ID: 300P191556

SALE DETAILS

\$545,000 to \$599,000

CONTACT DETAILS

Normanville

91 Main Road
Normanville, SA
08 8598 6100

Cassie Edwards

0400 856 900

walk-in robe and ensuite.

Three further generously sized bedrooms and the main bathroom are located at the opposite end of the home, making it an ideal layout for families, guests or flexible living arrangements.

Outdoor living is a true highlight, with large undercover decks at both the front and rear of the home. These sheltered alfresco spaces offer flexibility for entertaining, relaxed meals or quiet time outdoors in all seasons.

The front garden is landscaped with established native plantings and incorporates the enviro septic system, while the rear yard includes veggie beds, garden spaces and plenty of room to add a shed if desired. Access through the high-clearance carport adds everyday practicality.

The home is supported by a solar system and large rainwater tanks, helping to reduce running costs and support a more sustainable lifestyle.

Cape Jervis is a community known for its laid-back pace, natural beauty and strong local connections. Residents enjoy access to rugged coastline, walking trails and some of the Fleurieu Peninsula's most unspoilt beaches, along with the convenience of nearby Yankalilla and Normanville for everyday needs. It's a location that appeals to those seeking space, fresh air and a genuine sense of belonging.

This is a home that offers comfort, flexibility and lifestyle in equal measure. An inspection is highly recommended to fully appreciate the setting and feel on offer.

Disclaimer: We have in preparing this information used our best endeavours to ensure that the information contained herein is true and accurate but accept no responsibility and disclaim all liability in respect of any errors, omissions, inaccuracies or misstatements that may occur. Prospective purchasers should make their own enquiries to verify the information contained herein. RLA 62833

Other features: Carpeted, High Clearance, Openable Windows, Toilet Facilities, Window Treatments

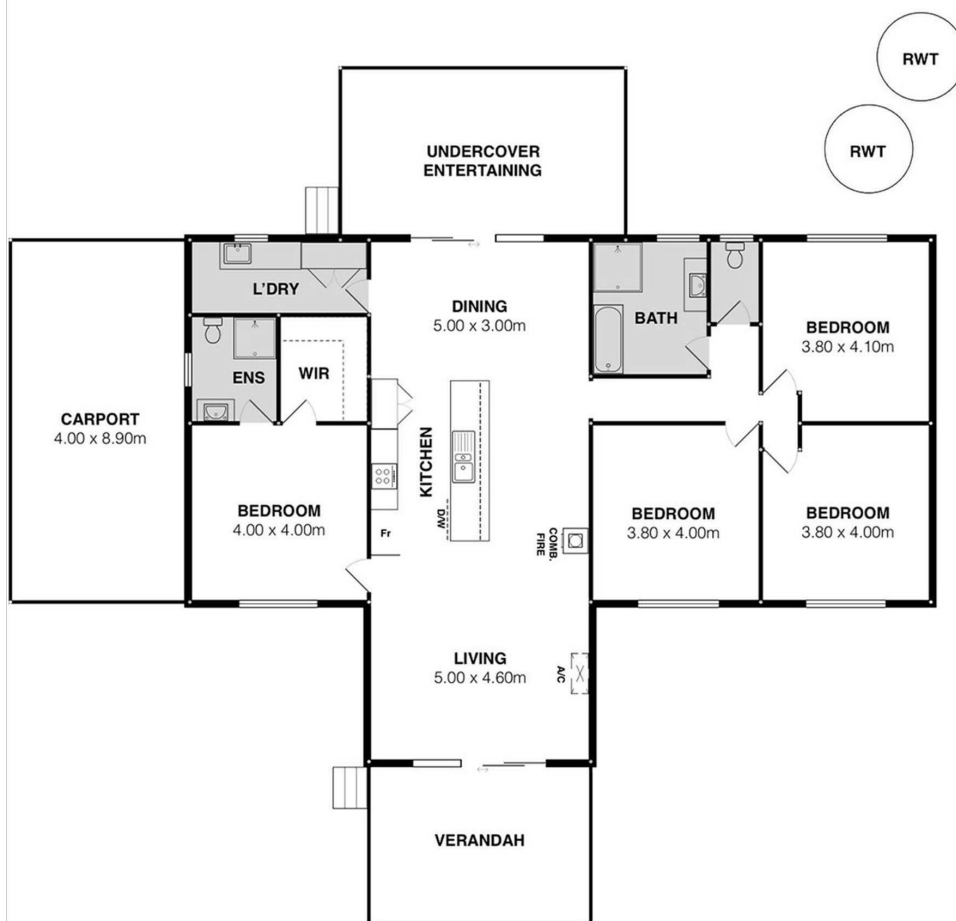
- Land Area 1,000.00 square metre
- Building Area: 150.00 square metres
- Bedrooms: 4
- Bathrooms: 2
- Car Parks: 2
- Single carport
- Ensuite











9 Island View Cl, Cape Jervis

Scale in metres. This drawing is for illustration purposes only. All measurements are approximate and details intended to be relied upon should be independently verified.



PRODUCED BY
SOUTH COAST STUDIOS