



5 Linda Crescent, YARRAWONGA, VIC 3730

Architecturally Designed Haven with Pool & Premium Entertaining.

This stunning five-bedroom, two-bathroom architecturally designed residence effortlessly combines contemporary flair with exceptional functionality, perfectly suited for growing families or those seeking a relaxed, low-maintenance lifestyle in retirement.

Showcasing quality appointments throughout, the home features elegant stone benchtops and a thoughtfully designed layout that maximises both space and natural light. Two expansive living zones provide versatility and comfort, each enhanced by striking pitched ceilings that create a sense of openness and architectural distinction.

Positioned in a quiet, child-friendly court, the property's exterior is equally impressive. Side vehicle access offers ample space for securely storing a large boat or caravan, while the north and west-facing outdoor entertaining areas are ideal for year-round gatherings. A sparkling in-ground, solar-heated pool adds a touch of luxury, complemented by a powered shed/workshop for additional functionality.

Completing the package is an automated irrigation system ensuring easy maintenance of the landscaped surrounds. This is a home where style, comfort, and practicality come together to deliver an outstanding lifestyle opportunity.

TYPE: For Sale

INTERNET ID: 300P191622

SALE DETAILS

\$969,000

CONTACT DETAILS

**Elders Real Estate
Yarrowonga**
48 Belmore Street
Yarrowonga, VIC
03 5743 9500

Xavier Leslie
0409 324 037

KEY NOTES PROPERTY HIGHLIGHTS:

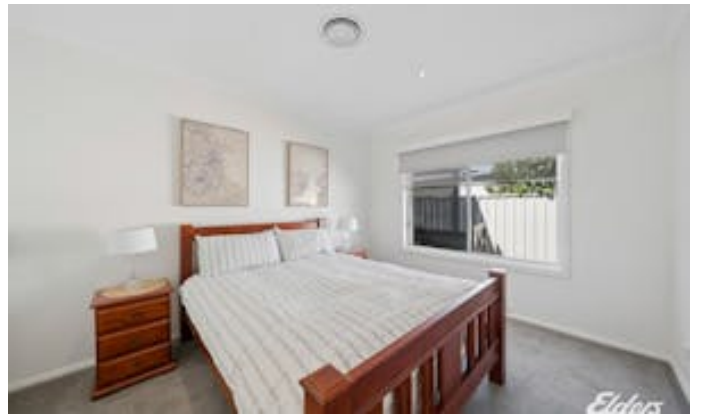
- * Reverse cycle air conditioning.
- * Solar panels.
- * Stone benchtops and quality fixtures and fittings throughout.
- * DLUG with rear roller door to single carport.
- * Side vehicle access to store boat / van.
- * Dual outdoor entertaining areas.
- * Large I.G solar heated pool.
- * Powered shed / workshop.
- * Resort style living in respectful neighborhood.

Other features: Carpeted, Exhaust, Heating, Openable Windows, Pool, Roller Door Access

- Land Area 866.00 square metres
- Bedrooms: 5
- Bathrooms: 2
- Double garage
- Single carport
- Ensuite









5 Linda Cres, Yarrawonga VIC 3730



THE ABOVE PLAN IS AN ARTIST'S IMPRESSION ONLY. IT INCLUDES ELEMENTS THAT ARE FOR DISPLAY PURPOSES ONLY AND MAY NOT BE TO SCALE. LANDSCAPING SHOWN IS INDICATIVE ONLY. DIMENSIONS ARE APPROXIMATE.