

28 Paddlesteamer Drive, MILANG, SA 5256

Milang, South Australia – A Rare Waterfront Treasure

Welcome to Milang – a rare gem nestled on the shores of Lake Alexandrina, one of South Australia's most tranquil and picturesque river towns. Just over an hour from Adelaide, Milang is a charming village that combines the serenity of country life with the magic of waterfront living. This is not just a property—it's a lifestyle opportunity like no other.

The Best Views on the River

Set in arguably the most scenic location on the Murray River system, this unique property offers sweeping 180-degree water views and direct access to the lake. Whether you're relaxing on the front veranda or watching the sunset glisten off the water, this home provides a front-row seat to the beauty of the natural world.

Your Waterfront Wonderland

This rare offering includes :

- A waterfront home ready to enjoy as your personal getaway or weekender
- Fully renovated kitchen and bathroom

The particulars contained herein are supplied for information only and shall not be taken as a representation in any respect on the part of the vendor or its agent. Interested parties should contact the nominated person or office for full and current details.

TYPE: For Sale

INTERNET ID: 300P191645

SALE DETAILS

\$450,000

CONTACT DETAILS

Sylvia Jemson-Ledger
Hills & Fleurieu
0487 301 390

- Sleeps 6
- Walk in walk out all furniture included

The home boasts a generous lounge, kitchen, and dining space with a sunroom to soak in the ever-changing lake views. There's flexibility to create one to two bedrooms alongside a well-sized bathroom. carpeted floors ensure comfort year-round. Held under a Crown lease with 47 years remaining, the lease has just been renewed-offering peace of mind and security for years to come.

A Sanctuary of Peace and Tranquility

If it's peace you're after, Milang delivers. With birdlife in abundance, enjoy the sights and sounds of pelicans, whistling kites, honeyeaters, and swifts-your only neighbors most days. Milang is a sanctuary for both humans and wildlife, perfect for artists, writers, nature lovers, and anyone needing a break from the city grind.

Unmatched Lifestyle Potential

Picture this: sipping wine on the veranda as yachts sail by in the golden afternoon light. Whether you're entertaining guests or simply relaxing solo, the home's seamless indoor-outdoor flow makes every moment feel like a retreat. Milang also presents a work-from-home lifestyle opportunity-fast becoming one of the most desirable trends in modern living.

Local Charm & Convenience

Everything you need is within walking distance:

- The historic Milang Jetty
- Boat ramp
- General store and takeaway
- Pub and mini-mart
- Parks and walking trails

Plus, you're just:

- 10 minutes to the Langhorne Creek wineries
- 30 minutes to Strathalbyn or Goolwa
- 10 minutes to the popular The Local restaurant/ Cafe in Clayton Bay

Whether it's kayaking, windsurfing, jet skiing, or just wandering down to fish at the water's edge, this is a true riverfront fantasy

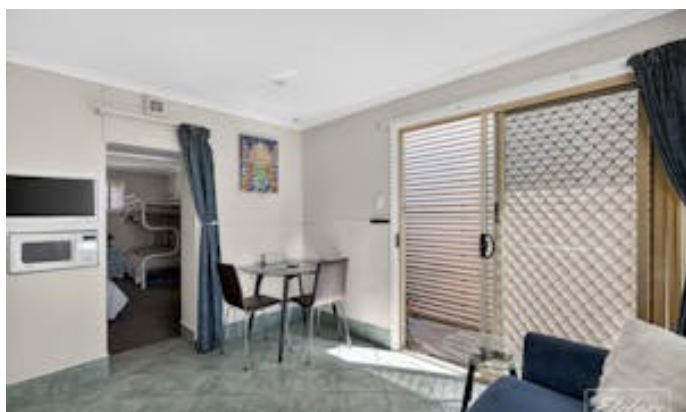
Don't Miss This Once-in-a-Lifetime Opportunity

Properties with this level of uniqueness, charm, and water frontage don't come along often. Milang offers not just a home, but a whole new way of living-peaceful, picturesque, and perfectly placed.

Disclaimer: We have in preparing this information used our best endeavours to ensure that the information contained herein is true and accurate but accept no responsibility and disclaim all liability in respect of any errors, omissions, inaccuracies or

misstatements that may occur. Prospective purchasers should make their own enquiries to verify the information contained herein. RLA 62833

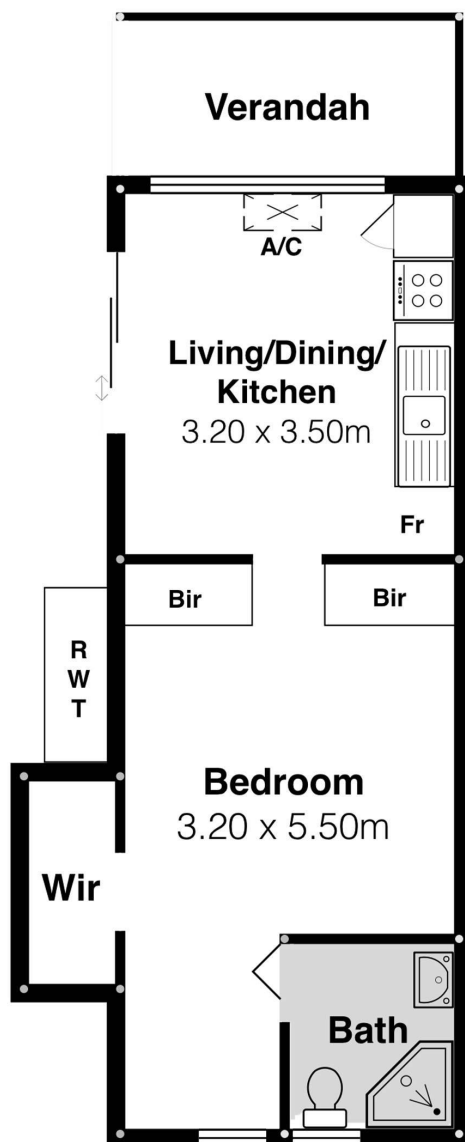
- Land Area 80.00 square metres
- Bedrooms: 1
- Bathrooms: 1
- Car Parks: 1











28 Paddlesteamer Dr, Milang

Scale in metres. This drawing is for illustration purposes only. All measurements are approximate and details intended to be relied upon should be independently verified.



PRODUCED BY
SOUTH COAST STUDIOS