



30 Boston Crescent, DOUGLAS, QLD 4814

Spacious Four Bedroom Family Home with Exceptional Parking in Douglas

Spacious four bedroom home in Douglas offering generous living areas and excellent outdoor space ideal for families seeking room to enjoy.

- Four bedrooms
- Two bathrooms plus additional external bathroom and toilet
- Five car spaces
- Large undercover outdoor entertainment area
- Low maintenance yard
- Multiple living zones with natural light

Located minutes from Townsville University Hospital and JCU this home sits in a family friendly neighbourhood with easy access to parks walking tracks shops cafes and public transport.

TYPE: For Rent

INTERNET ID: 300P191876

RENTAL DETAILS

Rent / Lease:

\$750 PER WEEK

CONTACT DETAILS

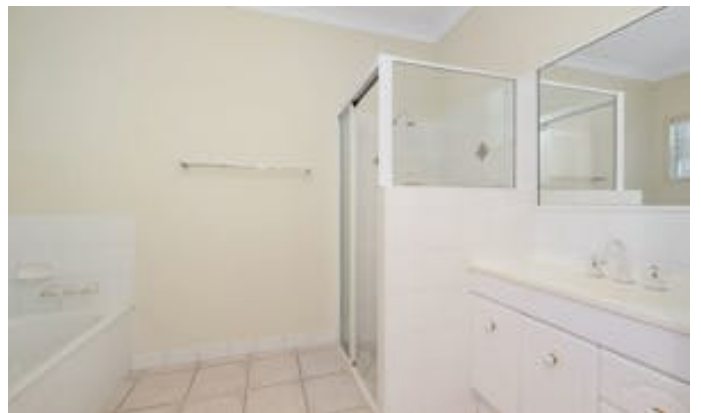
Chia Lawton

To book an inspection head to our website:
<https://smithandelliott.eldersrealestate.com.au/residential/rent>

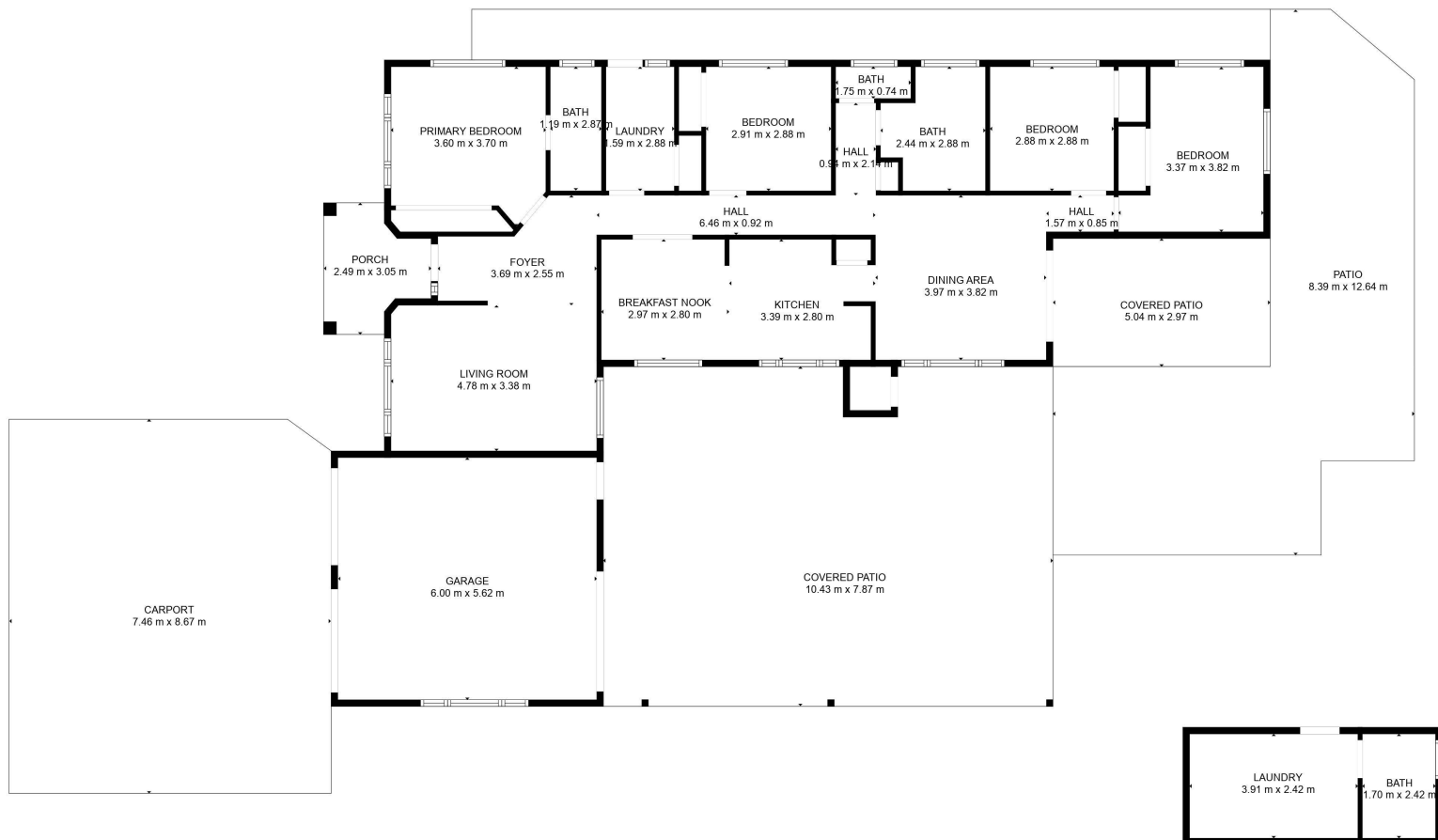
To apply for this property, please submit your application via 2APPLY:
<https://app.2apply.com.au/Agency/EldersSmithElliott>

Other features: Car Parking - Surface, Close to Schools, Close to Shops, Close to Transport, Openable Windows

- This property is: Unfurnished
- Pets: No
- Available Now
- Land Area 735.00 square metres
- Building Area: 194.00 square metres
- Bedrooms: 4
- Bathrooms: 2
- Double garage
- 3 car carport
- Ensuite







TOTAL: 145 m2
FLOOR 1: 145 m2
EXCLUDED AREAS: CARPORT: 64 m2, GARAGE: 34 m2, COVERED PATIO: 96 m2,
PATIO: 58 m2, PORCH: 6 m2, UNDEFINED: 1 m2,
WALLS: 15 m2

FLOOR PLAN CREATED BY CUBICASA APP. MEASUREMENTS DEEMED HIGHLY RELIABLE BUT NOT GUARANTEED.