

134 New Street, QUEENSTOWN, SA 5014

Character, Convenience & Future Potential in Queenstown

Positioned on a manageable 336sqm allotment in a well-connected pocket of Queenstown, this charming 1935-built home offers an excellent opportunity for first-home buyers, downsizers or savvy investors seeking solid long-term value.

The home comprises two bedrooms, a central living area and practical kitchen layout, with the bonus of a pergola and shed, providing flexible outdoor space for entertaining or storage. With approximately 90sqm of internal living, the property delivers comfortable functionality while still offering scope to update, enhance or personalise over time.

Zoned Residential within the City of Port Adelaide Enfield and held under Fee Simple title, the property presents clear ownership and future potential in a suburb that continues to benefit from strong growth and buyer demand.

Located just minutes from local shops, public transport, schools and only a short drive to Semaphore Beach and the Adelaide CBD, this address offers lifestyle convenience paired with long-term investment appeal.

TYPE: For Sale

INTERNET ID: 300P191906

SALE DETAILS

\$725,000 - \$750,000

CONTACT DETAILS

Barossa

127 Murray Street

Tanunda, SA

(08) 8562 2883

RLA: 62833

Tristan Watt

0418 617 287

Key features include:

- Circa 1935 character home
- Two well-proportioned bedrooms
- Pergola and shed
- Approx. 336sqm allotment with 10.36m frontage
- Residential zoning
- City of Port Adelaide Enfield
- Close to transport, schools and coastal amenities

A smart opportunity in an evolving inner-west location - inspect and secure with confidence.

For further information or to arrange an inspection, contact:

Tristan Watt

Elders Real Estate Adelaide

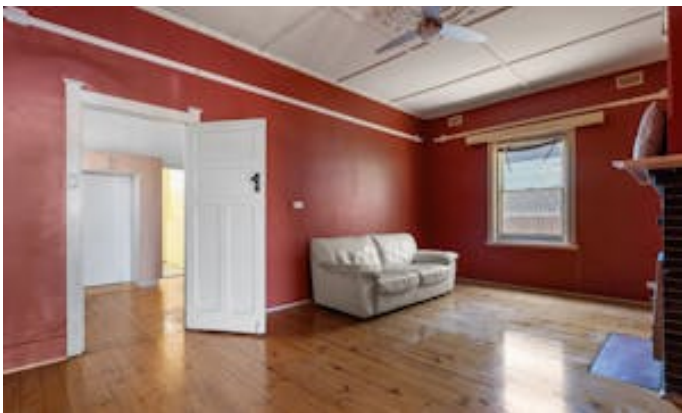
Mob: 0418 617 287

Disclaimer:

We have in preparing this information used our best endeavours to ensure that the information contained herein is true and accurate but accept no responsibility and disclaim all liability in respect of any errors, omissions, inaccuracies, or misstatements that may occur. Prospective purchasers should make their own enquiries to verify the information contained herein. Elders Real Estate RLA62833

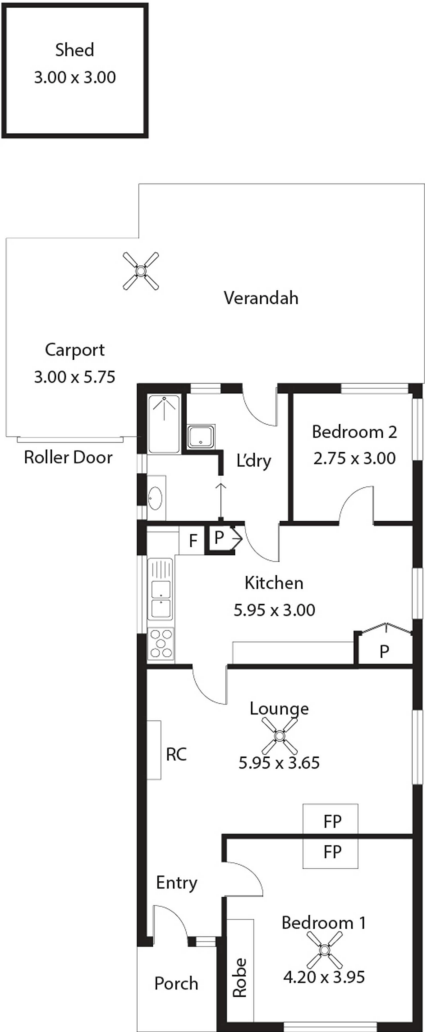
Other features: Close to Schools, Close to Shops, Close to Transport

- Land Area 336.00 square metres
- Building Area: 90.00 square metres
- Bedrooms: 2
- Bathrooms: 1
- Single garage
- Single carport





134 New Street,
QUEENSTOWN



Living:	72.02SQ.M
Verandah:	18.00SQ.M
Carport:	17.25SQ.M
Porch:	3.24SQ.M
Shed:	9.00SQ.M
TOTAL:	119.51SQ.M

This Drawing is for illustration purposes only. All measurements are internal and approximate. Details intended to be relied upon should be independently verified.