



14 Fimmell Court, MOUNT GAMBIER, SA 5290

Modern Style, Fresh Updates & Family Functionality

Step into 14 Fimmell Court-an immaculately presented home where modern design meets practical family living. Recently refreshed with full exterior painting, updated interior finishes in key areas, and new doors and fittings throughout, this property is ready to impress. Upgraded front steps and a reworked driveway complete the polished first impression.

Set on an elevated block with commanding street appeal, the home is ideally located within walking distance of Uni SA, TAFE SA, Montebello IGA and Community Kids childcare. Mulga Street Primary and the CBD are only a short drive away.

Inside, Jarrah flooring flows through expansive open-plan living, dining, and kitchen zones, all comforted by ducted heating and cooling. A second lounge offers flexibility for families or guests.

The kitchen delivers both function and style with stainless-steel appliances, electric oven and cooktop, double sink, pantry, and generous bench space. Sliding doors connect seamlessly to a covered alfresco area and low-maintenance rear yard-with a bonus lemon tree for homegrown flair.

TYPE: For Sale

INTERNET ID: 300P191909

SALE DETAILS

\$769,000

CONTACT DETAILS

RLA62833

9 Bay Road
MOUNT GAMBIER, SA

08 8726 4400

RLA: 62833

Sarah Barney

0407 714 354

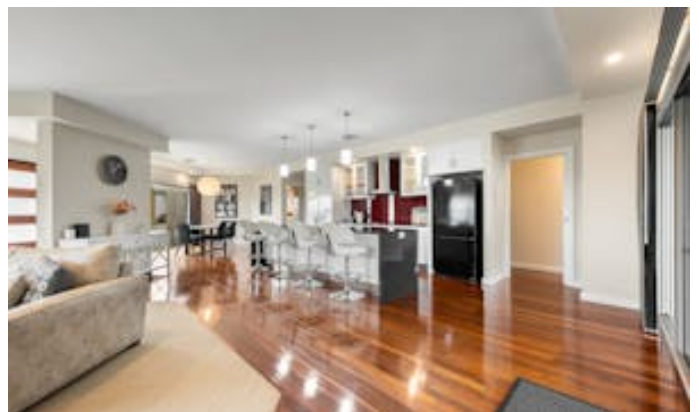
The master suite is a standout with a walk-through ensuite featuring twin basins, a rain shower, and a separate toilet, plus a well-designed walk-in robe. Two additional bedrooms include built-in storage, serviced by a three-way bathroom with separate shower, bath, and toilet zones.

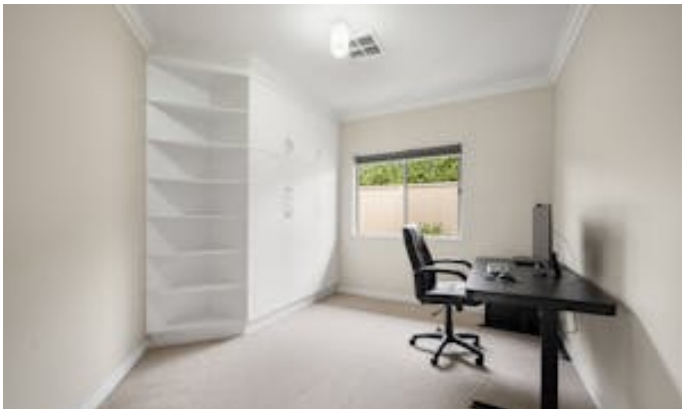
A hot mix driveway leads to a double garage with electric roller door and rear yard access. The house has solar and rain water plumber to house also.

This beautifully finished home is a standout in a sought-after family-friendly location. Enquire now with Sarah Barney at Elders Real Estate.

Other features: Carpeted, Security System

- Land Area 752.00 square metres
- Bedrooms: 3
- Bathrooms: 2
- Car Parks: 2
- Ensuite











14 FIMMELL COURT, MOUNT GAMBIER

This drawing is for illustration purpose only. All measurements are approximate only information intended to be relied upon should independently verified.

