



6537 Karoonda Highway, MINDARIE, SA 5309

RURAL ESCAPE!

An affordable opportunity to secure a rural holding in the heart of South Australia's Murray Mallee region.

Set within the quiet township of Mindarie, this property offers a transportable dwelling providing flexible accommodation options. The floor plan allows for up to three bedrooms, along with a study, lounge, kitchen, bathroom and laundry.

Complementing the home are two storage sheds and a solar system, adding practicality and value for everyday living.

This is an ideal option for those seeking an affordable renovation project, a peaceful lifestyle retreat, or a base to escape the pace of city living.

Mindarie is a small rural locality positioned between Karoonda and Loxton, surrounded by broadacre farming land. The area is known for its tranquillity and strong agricultural roots, with a tightly knit community and a recorded population of 32 in the 2021 Australian Census.

TYPE: For Sale

INTERNET ID: 300P191974

SALE DETAILS

\$105,000

CONTACT DETAILS

Elders Riverland

2 East Terrace

LOXTON, SA

8588 6066

RLA: 62833

Marc Worsfold

0419 030 892

Method of Sale

The property is offered for sale by Private Treaty. All offers and expressions of interest are to be formally submitted by Letter of Offer to the exclusive listing agent.

For further information, please contact Marc Worsfold at Elders Real Estate Loxton. Inspections will be clearly advertised

The property is being sold "Under Instructions from the Public Trustee"

Property Particulars

Land Size approximately 998m²

Dwelling Transportable home

Build Date approximately 1960

Certificate of Title Volume 5426 Folio 951

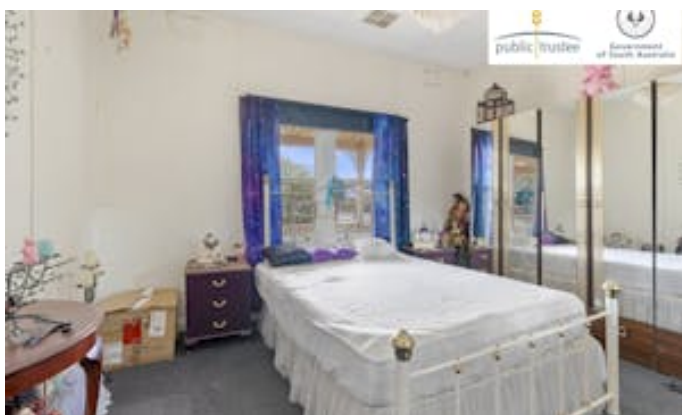
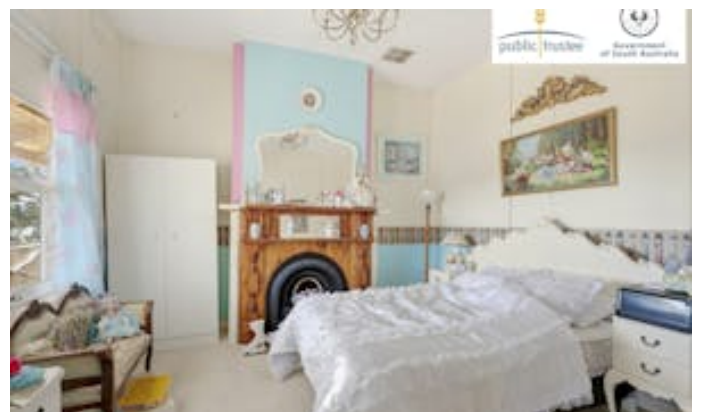
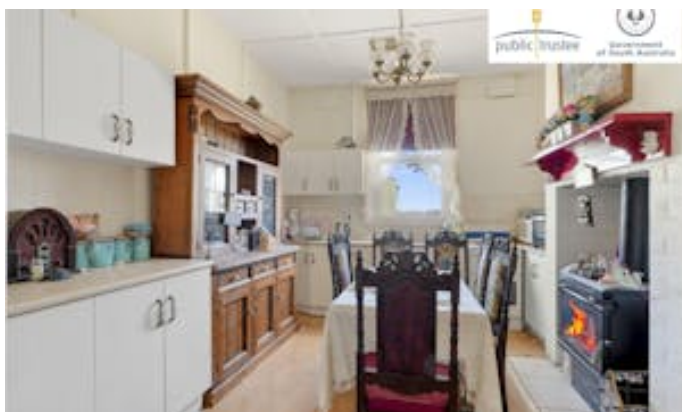
Water: Town bore water supply (by arrangement)

Disclaimer:

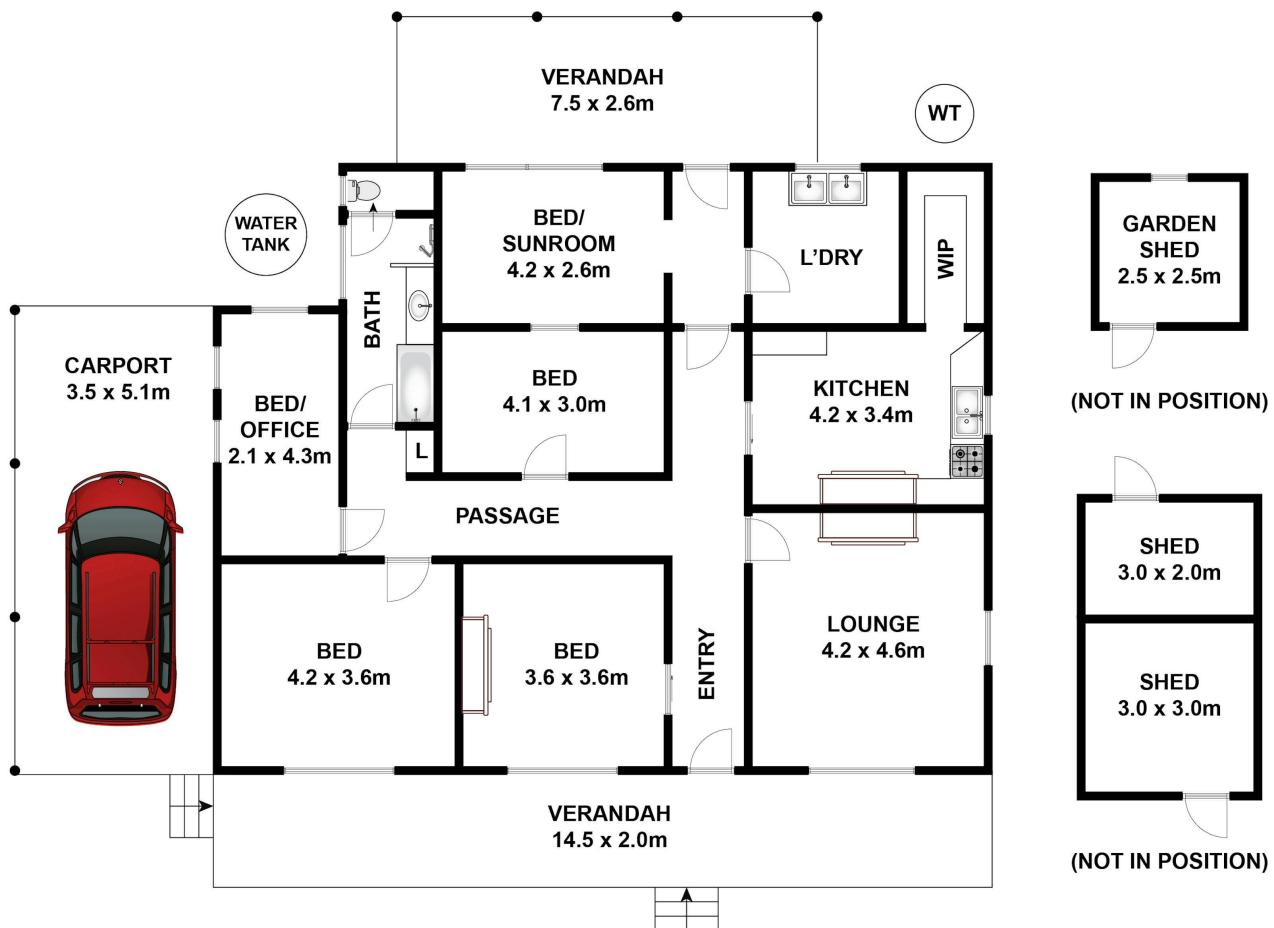
In preparing this information, we have used our best endeavours to ensure the details contained herein are true and accurate. However, we accept no responsibility and disclaim all liability in respect of any errors, omissions or inaccuracies. Prospective purchasers should make their own enquiries to verify the information contained herein.

RLA 62833

- Land Area 998.00 square metres
- Building Area: 157.00 square metres
- Bedrooms: 3
- Bathrooms: 1
- Car Parks: 2







Approx House Area 138m²

Whilst bwrm.com.au has made every attempt to ensure the accuracy of the floor plan contained here, measurements are approximate and no responsibility is taken for any error, omission, or mis-statement. This plan is for illustrative purposes only.

6537 Karoonda Highway, Mindarie



Real Estate