



893 Ridgley Highway, RIDGLEY, TAS 7321

The Ultimate Family Home Opposite the School

If you've been searching for a home that actually keeps up with family life, 893 Ridgley Highway, Ridgley built by master builders Denby and Hardy delivers in a big way. Sitting directly opposite Ridgley Primary School, this outstanding property is all about space, flexibility, and easy living.

Inside, you'll find four generous bedrooms, all with built-ins, including a standout master suite with walk-in robe and ensuite. With two separate living areas, there's room for everyone - movie nights, quiet downtime, or a dedicated kids' zone without stepping on each other's toes.

The heart of the home opens wide through double stacker doors to a covered alfresco area, making entertaining effortless and everyday living feel connected and relaxed. Stay comfortable year-round with reverse cycle air conditioning and the warmth of a wood heater for those cooler months.

Need serious storage or workspace? You're covered. A double garage with internal access is paired with a huge 9m x 6m workshop/double garage, perfect for tradies, tinkerers, or anyone who needs room for tools, toys, or weekend projects.

TYPE: For Sale

INTERNET ID: 300P191976

SALE DETAILS

Offers Over \$820,000

CONTACT DETAILS

Elders Real Estate Burnie

72-74 Wilson Street
Burnie, TAS
03 6432 2311

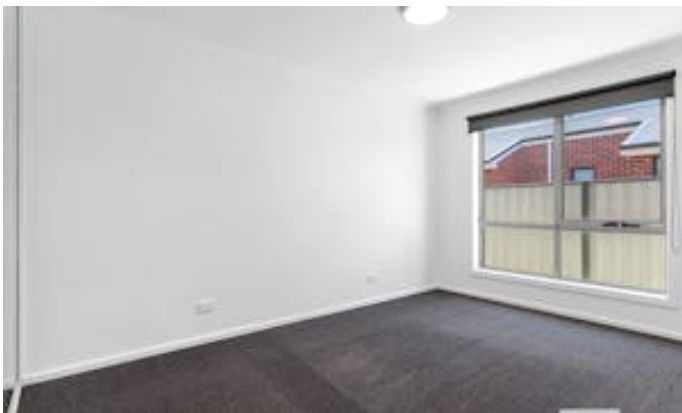
Bruce Jubb
0417987828

Packed with features, loaded with space, and positioned for pure convenience-this is one not to miss.

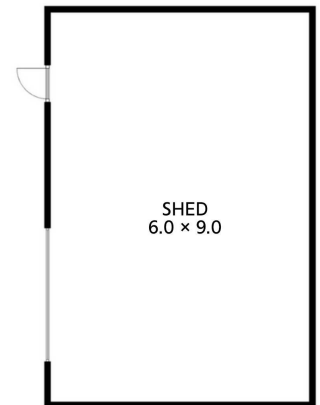
DISCLAIMER: While Elders Real Estate Burnie has taken every care to verify the accuracy of the details in this advertisement, we cannot guarantee its correctness. Prospective buyers or tenants need to take such action as is necessary, to satisfy themselves of any pertinent matters

- Land Area 790.00 square metres
- Building Area: 247.00 square metres
- Bedrooms: 4
- Bathrooms: 2
- 4 car garage









(NOT IN EXACT LOCATION)